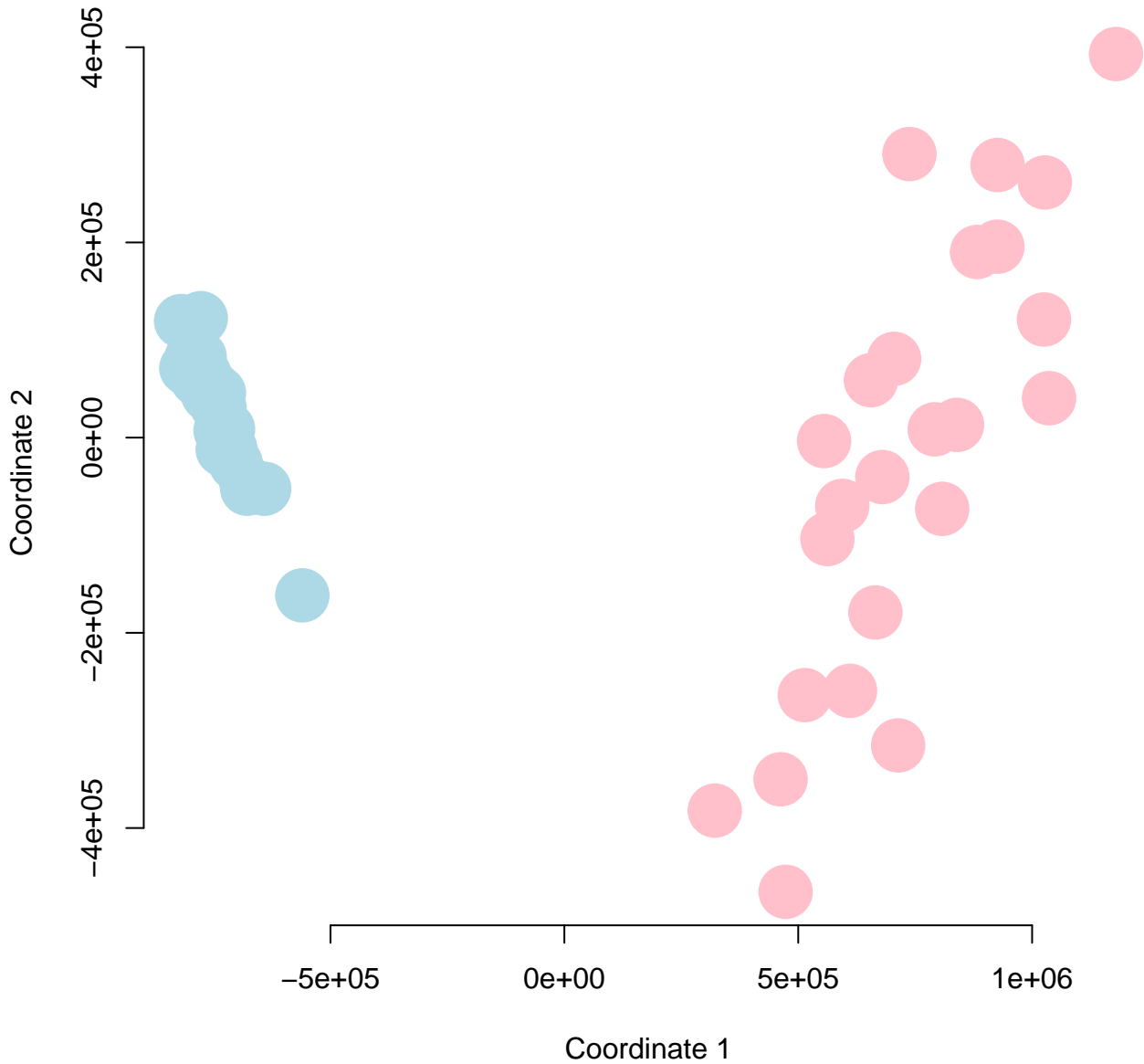
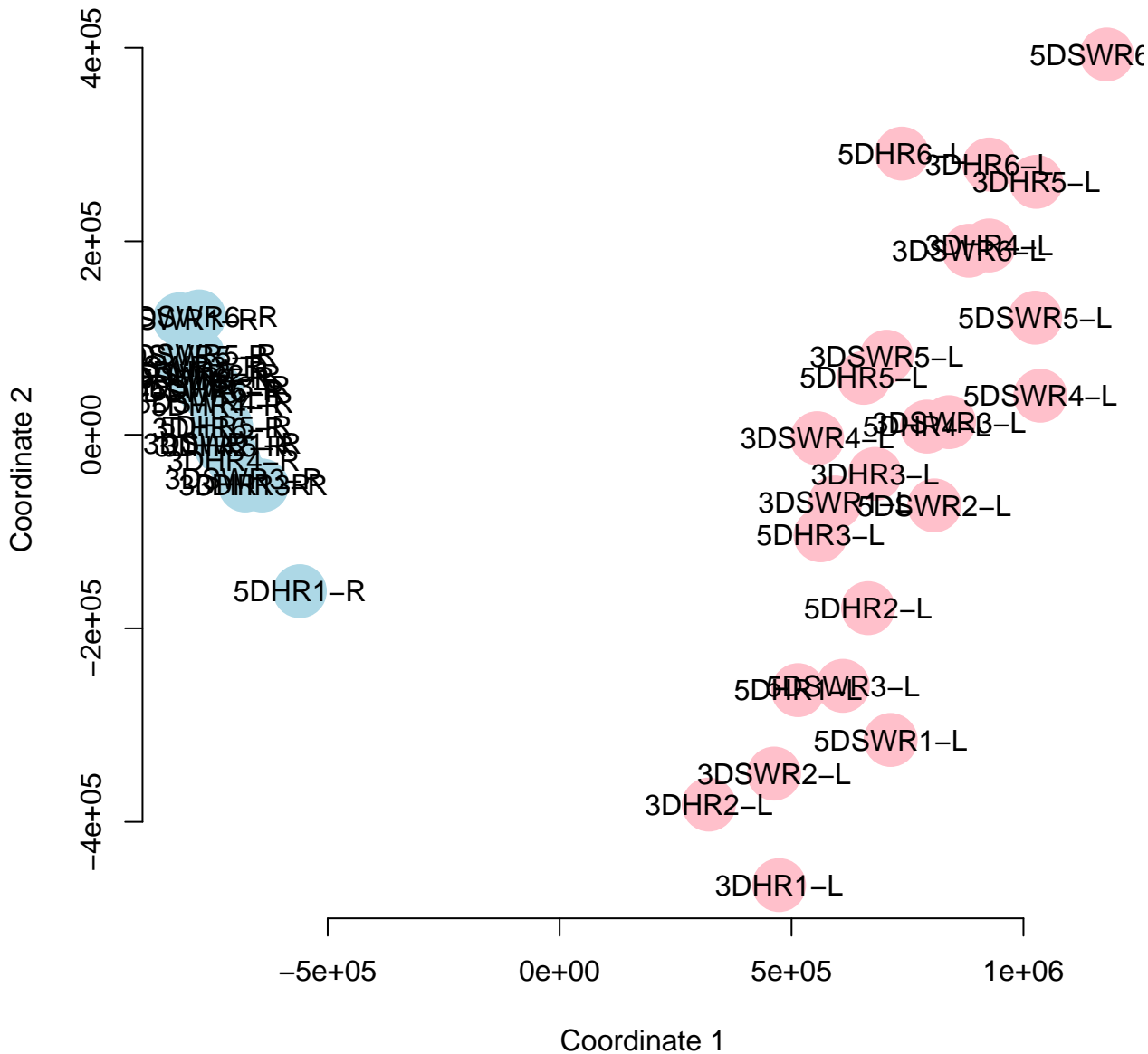


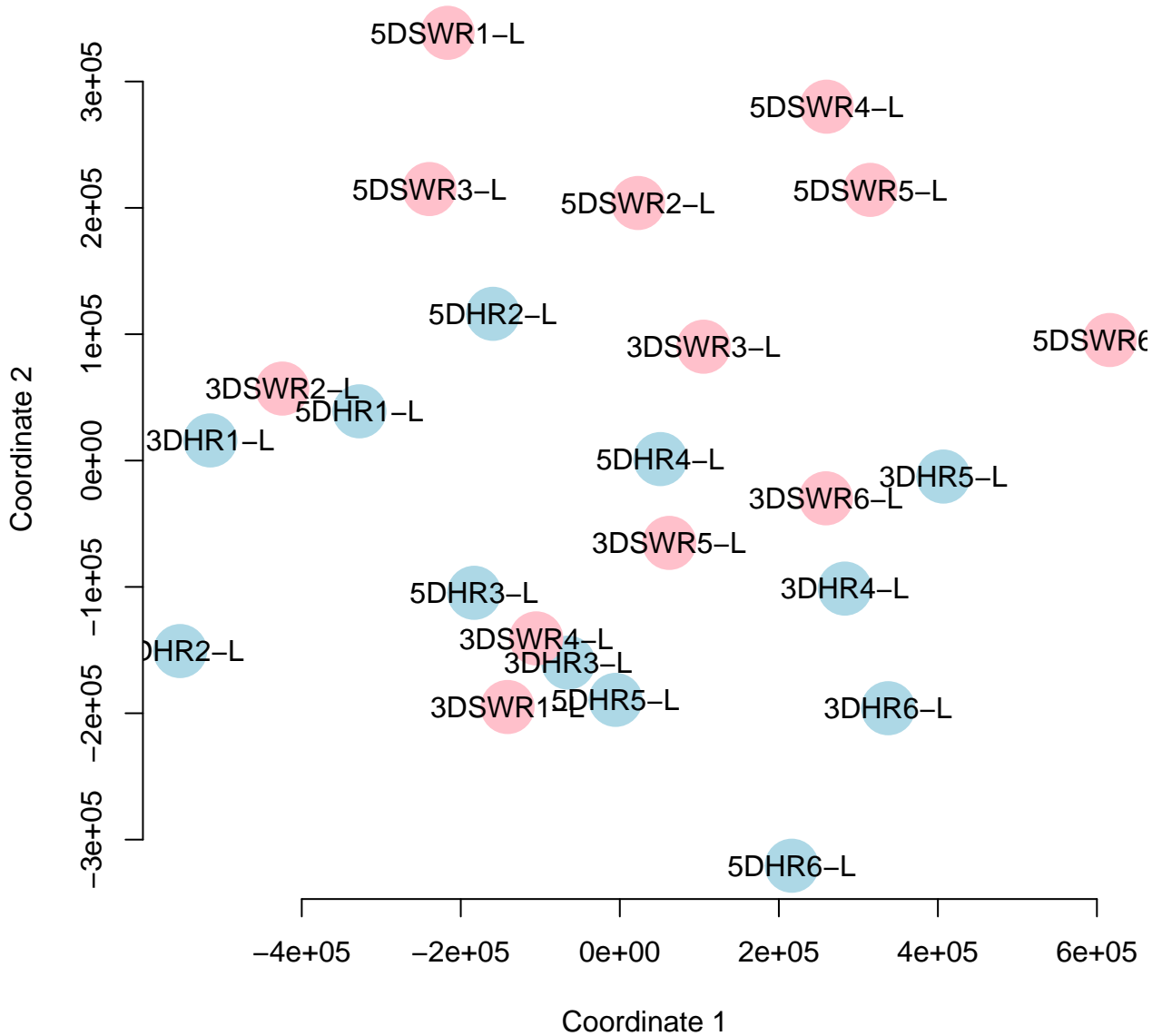
MDS plot all samples



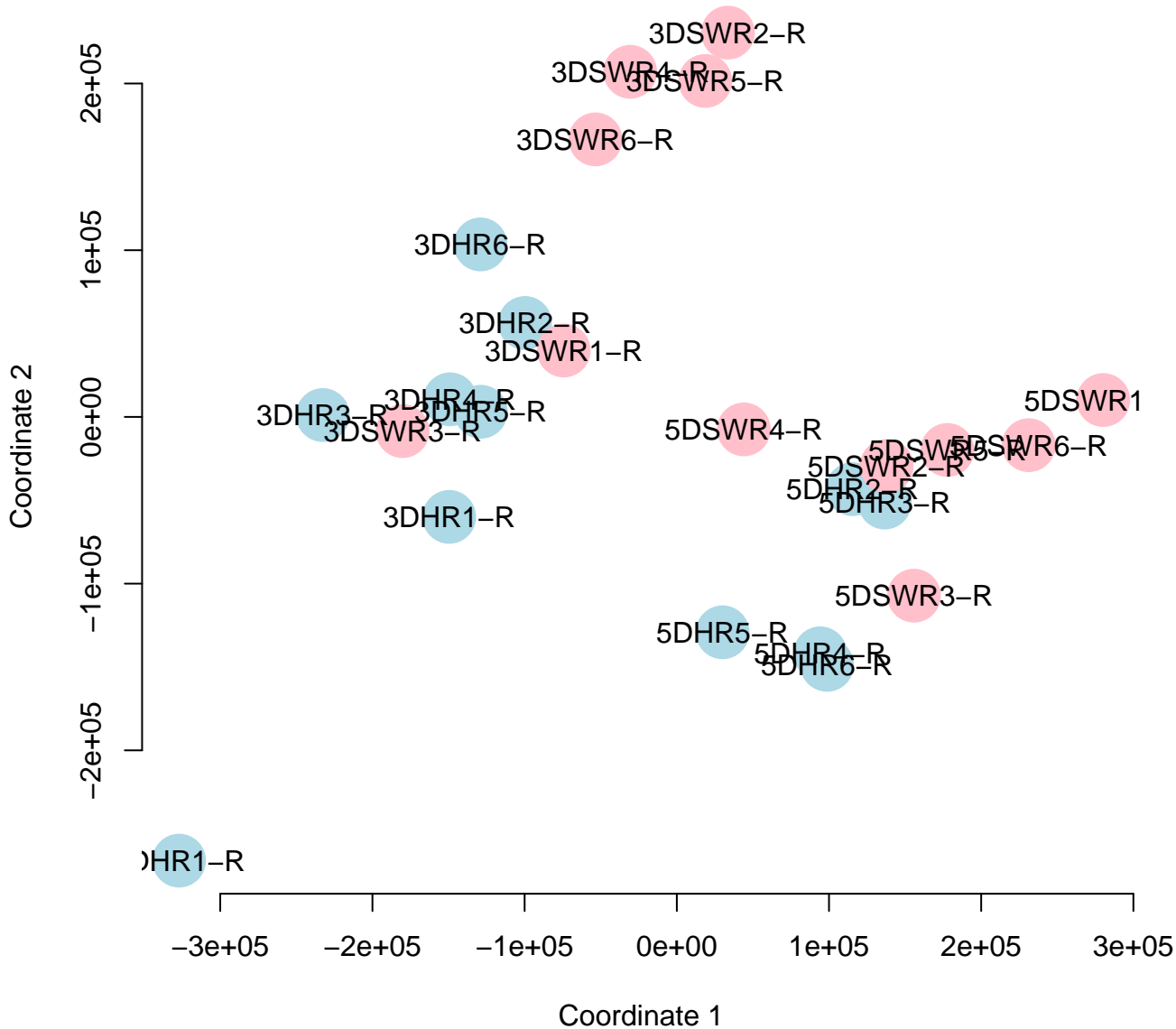
MDS plot all samples



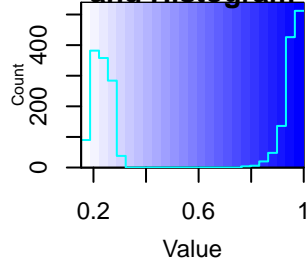
MDS plot leaf samples



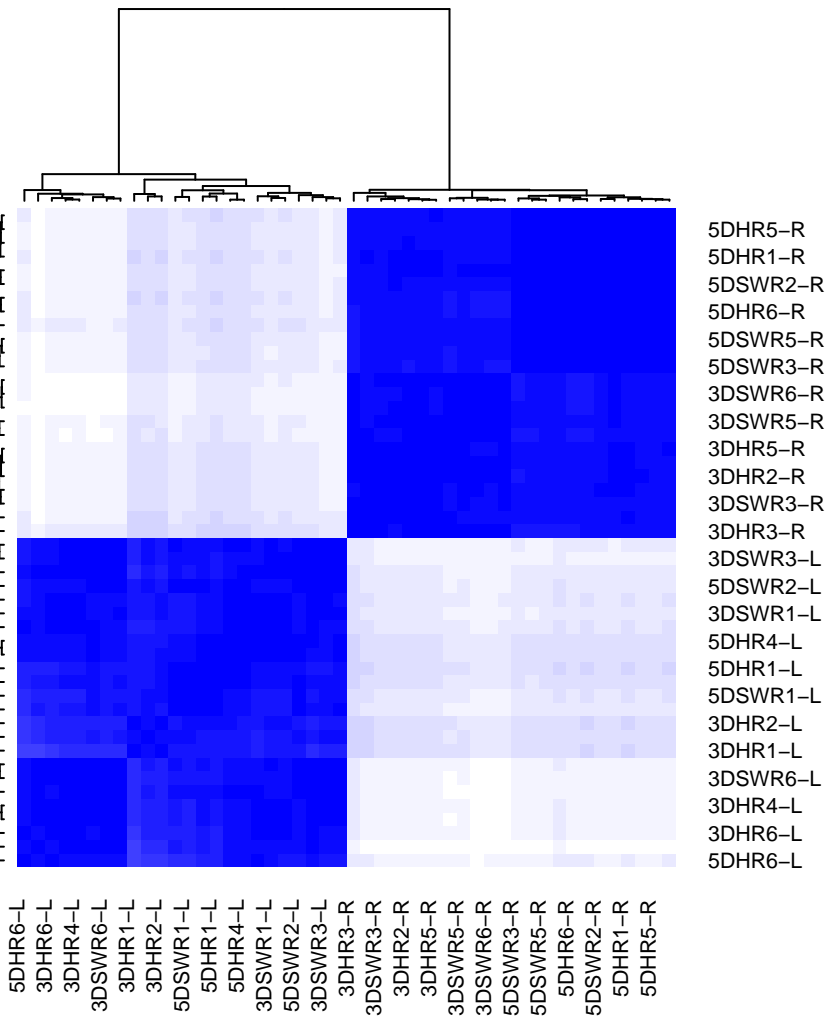
MDS plot root samples



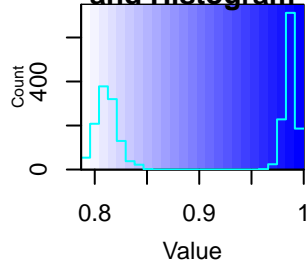
**Color Key
and Histogram**



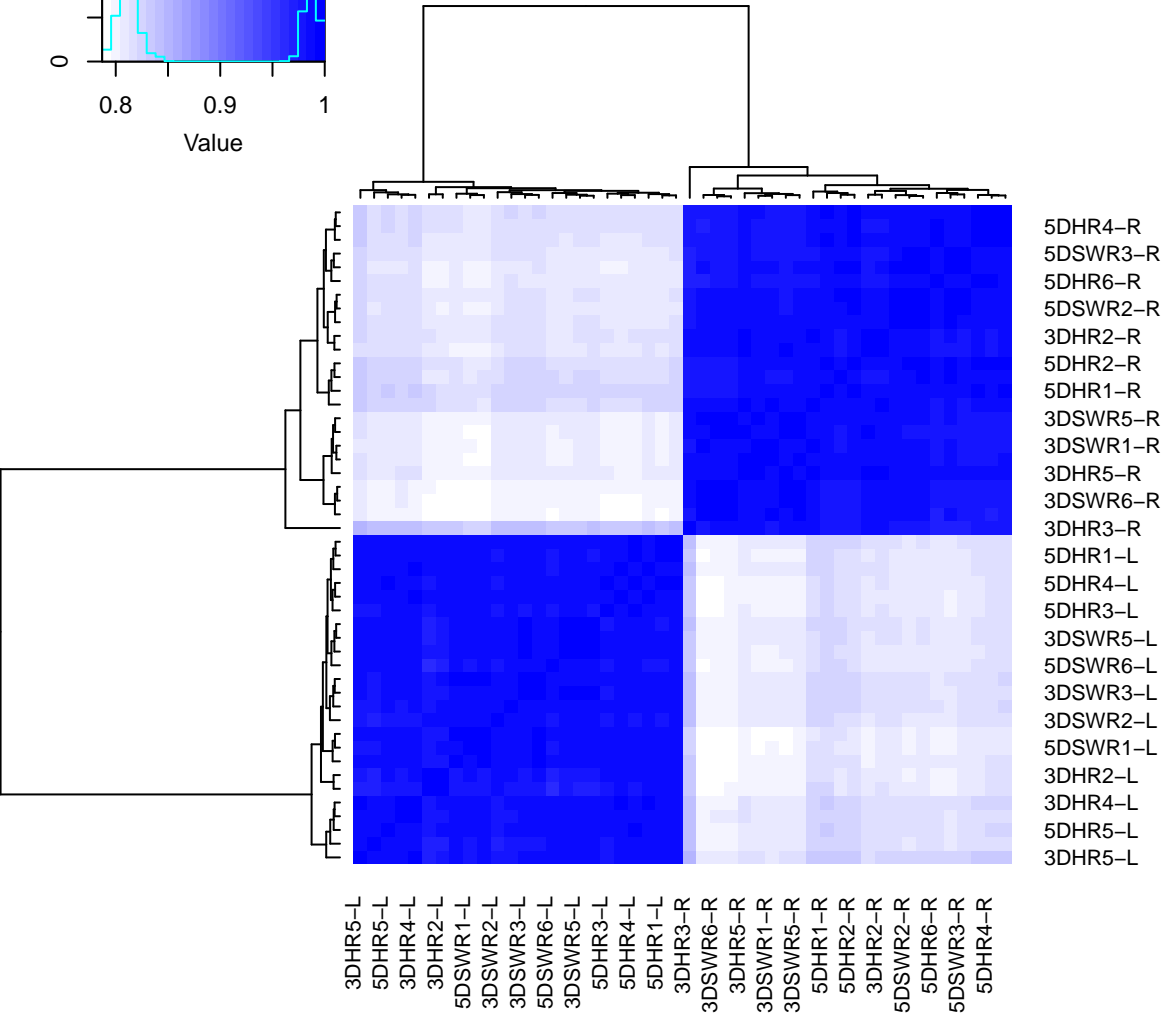
pearson correlation all samples



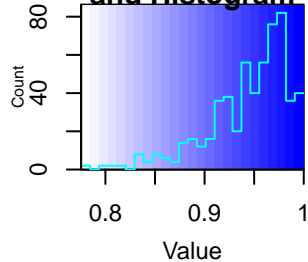
Color Key and Histogram



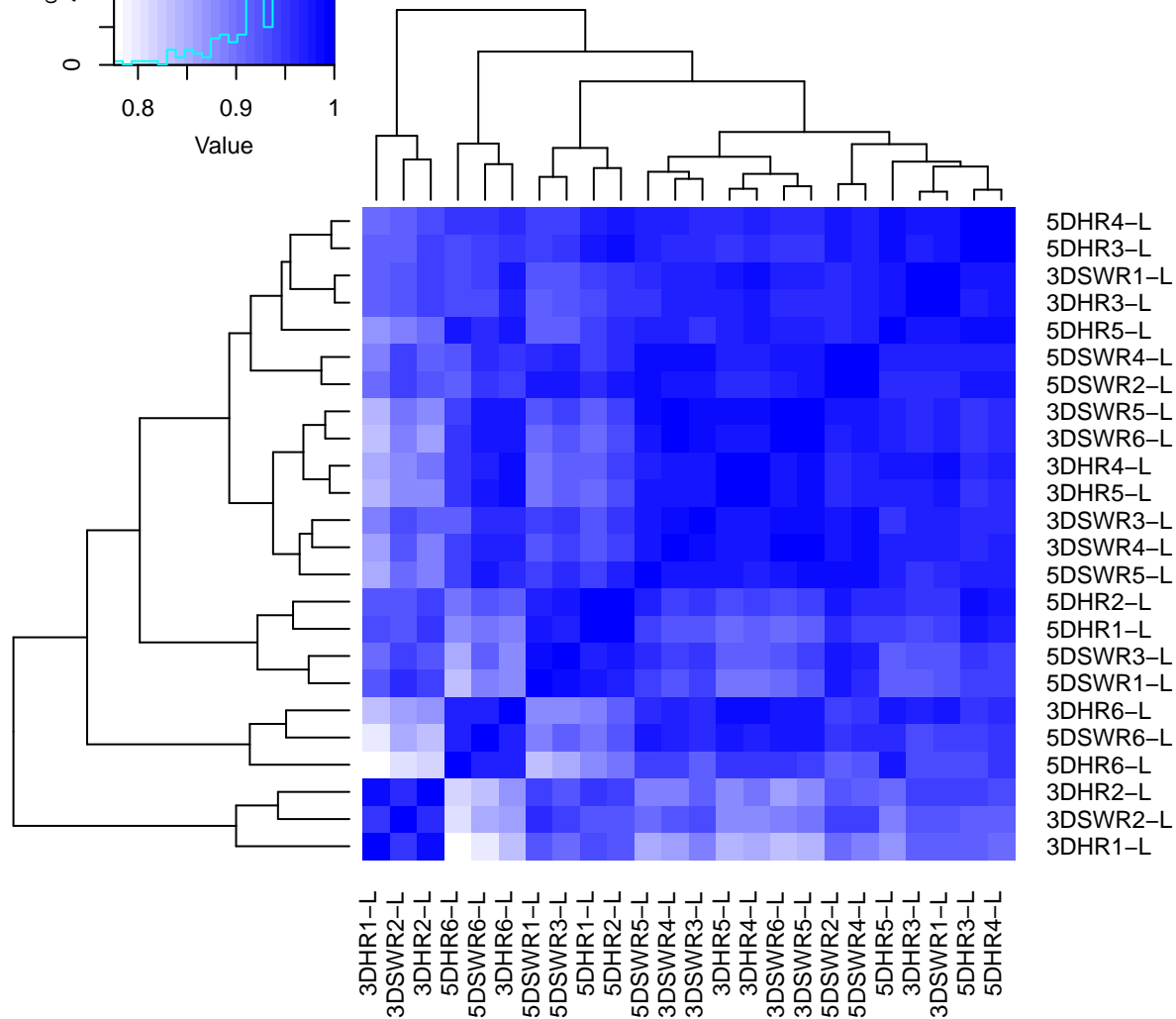
Pearson correlation all samples



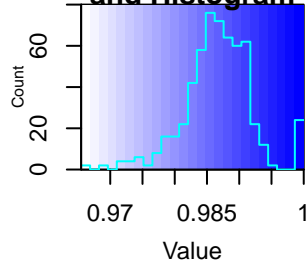
Color Key and Histogram



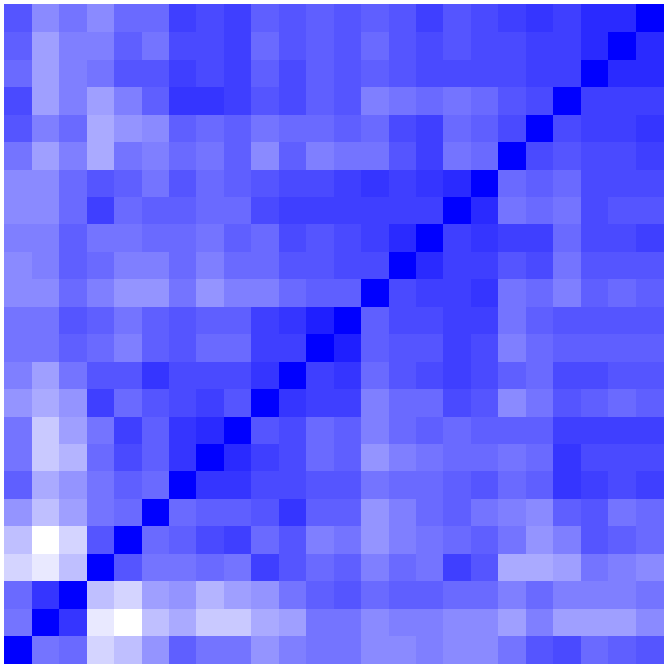
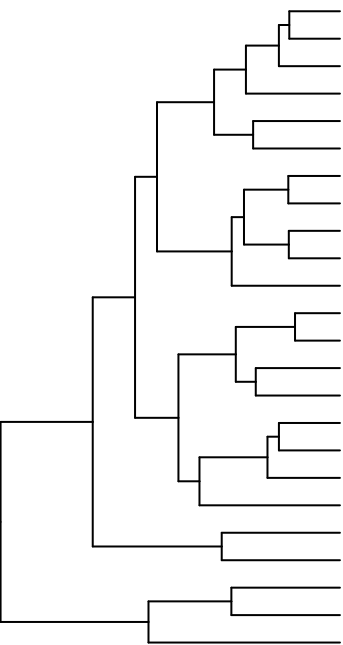
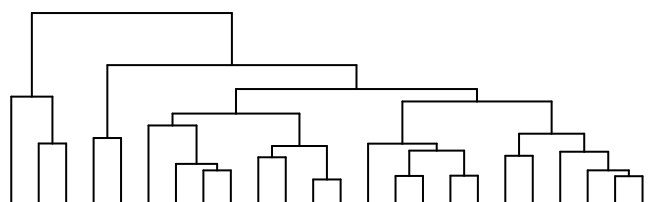
Pearson correlation leaf samples



Color Key and Histogram



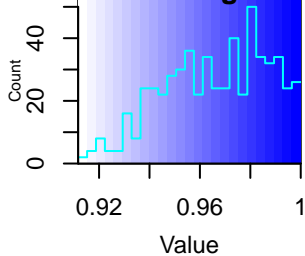
earman correlation leaf samples



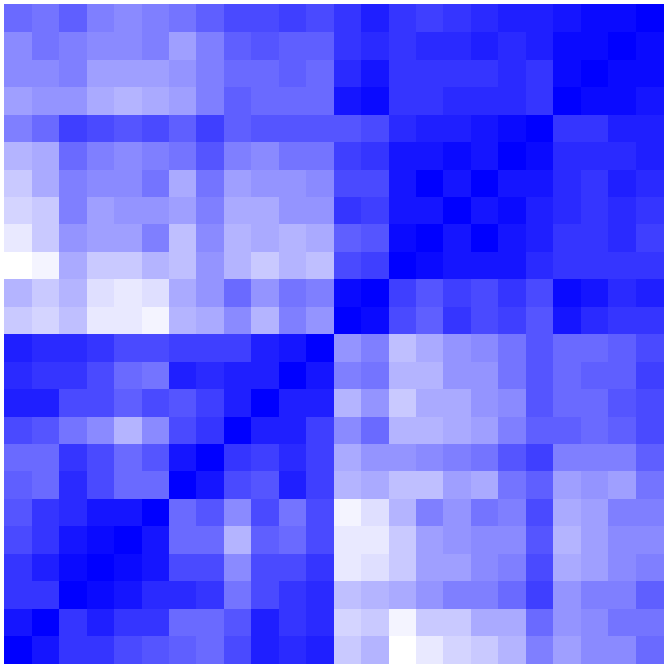
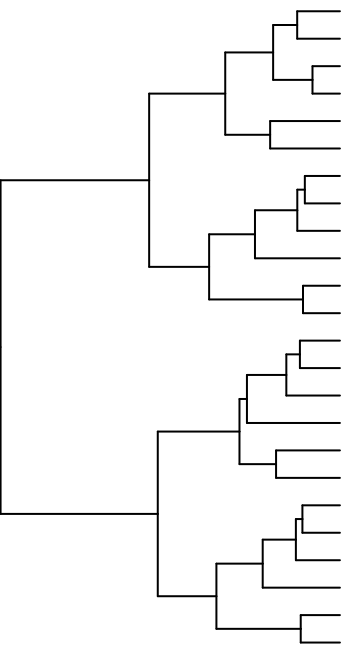
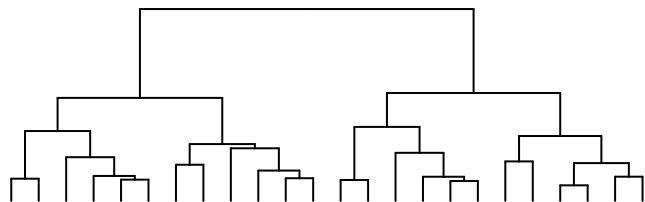
- 5DSWR2-L
- 5DSWR4-L
- 5DSWR5-L
- 3DSWR3-L
- 5DSWR1-L
- 5DSWR3-L
- 5DHR4-L
- 5DHR5-L
- 5DHR2-L
- 5DHR1-L
- 5DHR3-L
- 3DSWR1-L
- 3DHR3-L
- 3DHR4-L
- 3DHR6-L
- 3DSWR5-L
- 3DSWR6-L
- 3DSWR4-L
- 3DHR5-L
- 5DSWR6-L
- 5DHR6-L
- 3DHR2-L
- 3DHR1-L
- 3DSWR2-L

- 3DSWR2-L
- 3DHR1-L
- 3DHR2-L
- 5DHR6-L
- 5DSWR6-L
- 3DHR5-L
- 3DSWR4-L
- 3DSWR6-L
- 3DSWR5-L
- 3DHR6-L
- 3DHR4-L
- 3DHR3-L
- 3DSWR1-L
- 5DHR3-L
- 5DHR1-L
- 5DHR2-L
- 5DHR5-L
- 5DHR4-L
- 5DSWR3-L
- 5DSWR1-L
- 3DSWR3-L
- 5DSWR5-L
- 5DSWR4-L
- 5DSWR2-L

Color Key and Histogram



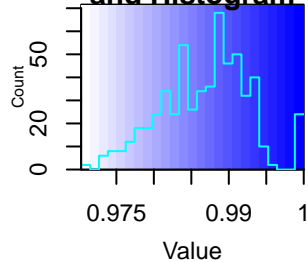
Pearson correlation root samples



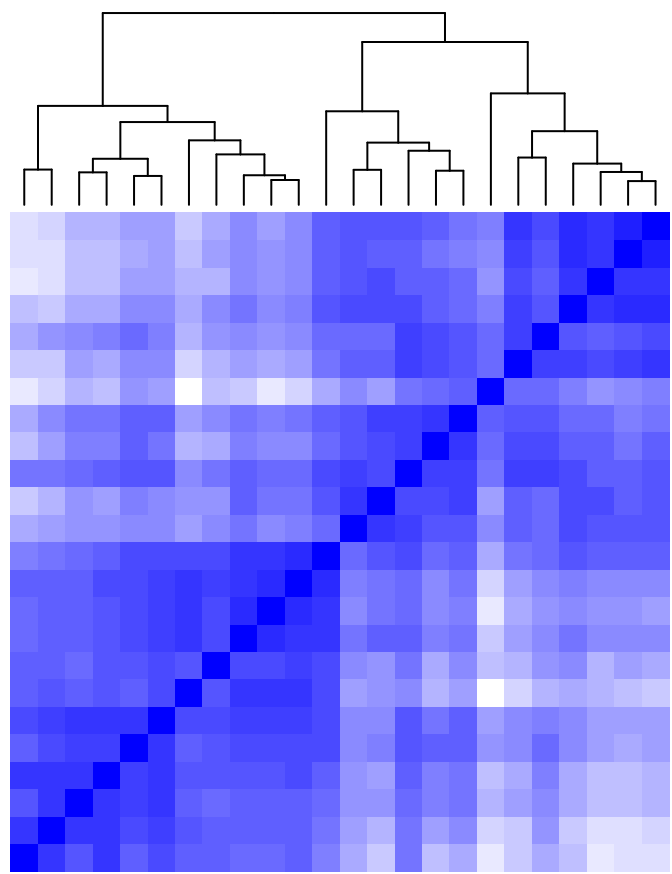
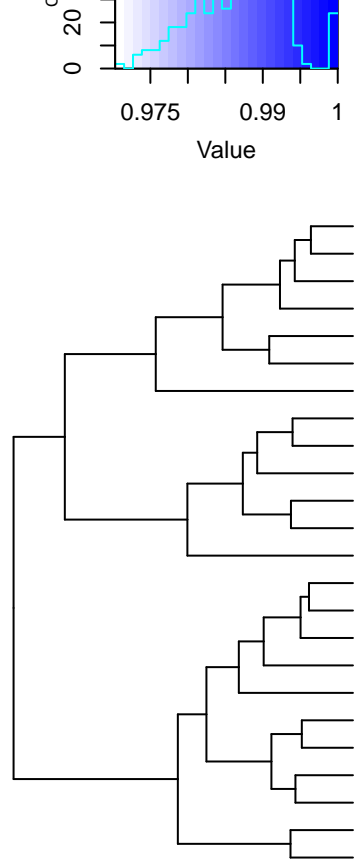
- 5DHR1-R
- 5DHR2-R
- 5DHR3-R
- 5DHR5-R
- 5DSWR4-R
- 5DSWR2-R
- 5DSWR5-R
- 5DSWR6-R
- 5DSWR1-R
- 5DSWR3-R
- 5DHR4-R
- 5DHR6-R
- 3DHR4-R
- 3DHR5-R
- 3DHR2-R
- 3DHR1-R
- 3DSWR1-R
- 3DSWR3-R
- 3DSWR2-R
- 3DSWR6-R
- 3DSWR4-R
- 3DSWR5-R
- 3DHR6-R
- 3DHR3-R

- 3DHR3-R
- 3DHR6-R
- 3DSWR5-R
- 3DSWR4-R
- 3DSWR6-R
- 3DSWR2-R
- 3DSWR3-R
- 3DSWR1-R
- 3DHR1-R
- 3DHR2-R
- 3DHR5-R
- 3DHR4-R
- 5DHR6-R
- 5DHR4-R
- 5DSWR3-R
- 5DSWR1-R
- 5DSWR6-R
- 5DSWR5-R
- 5DSWR2-R
- 5DSWR4-R
- 5DHR5-R
- 5DHR3-R
- 5DHR2-R
- 5DHR1-R

Color Key and Histogram



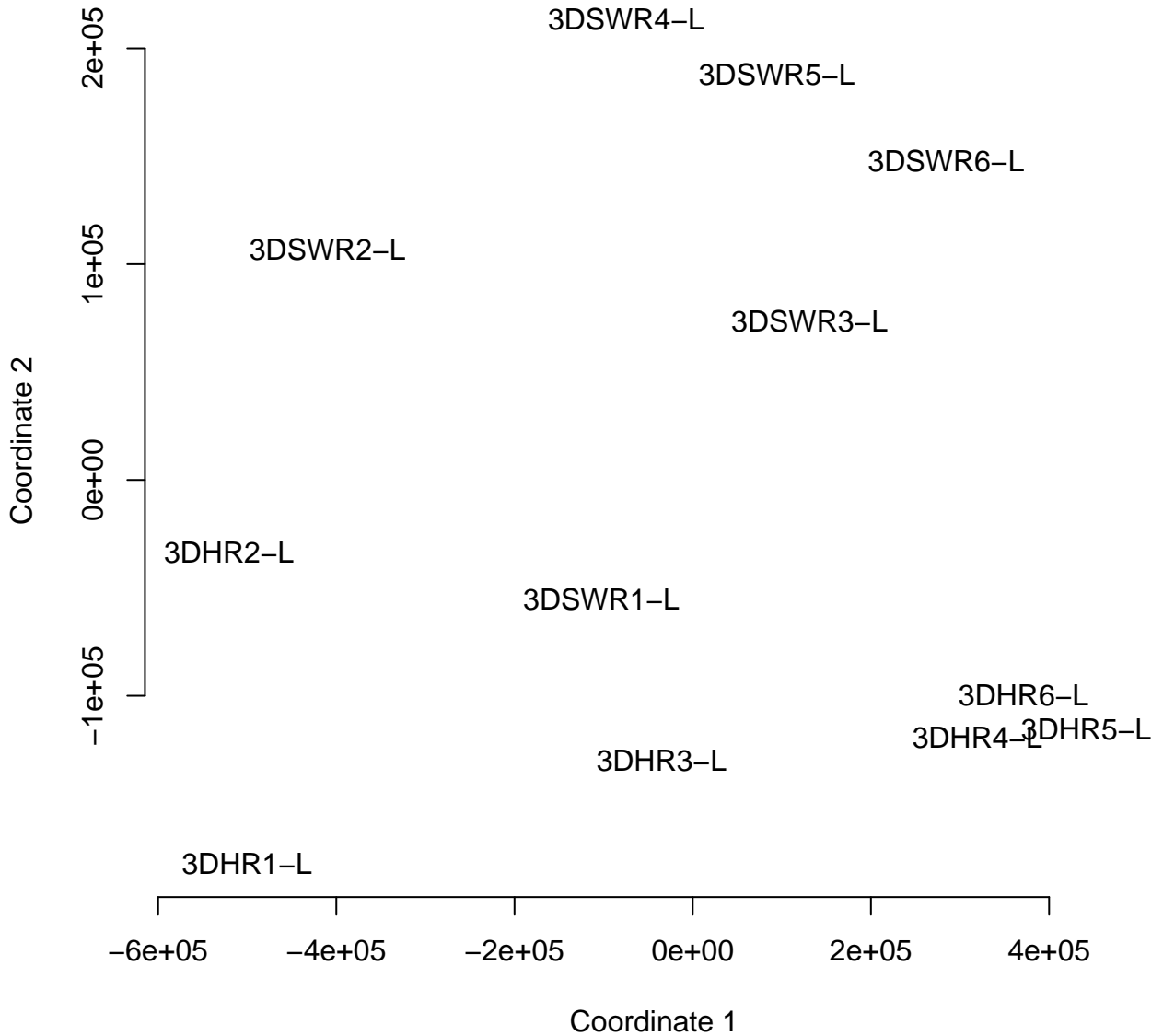
pearman correlation root samples



- 3DSWR4-R
- 3DSWR6-R
- 3DSWR2-R
- 3DSWR5-R
- 3DHR4-R
- 3DHR6-R
- 3DHR3-R
- 3DHR1-R
- 3DHR2-R
- 3DHR5-R
- 3DSWR1-R
- 3DSWR3-R
- 5DSWR4-R
- 5DSWR5-R
- 5DSWR1-R
- 5DSWR2-R
- 5DSWR6-R
- 5DSWR3-R
- 5DHR2-R
- 5DHR1-R
- 5DHR5-R
- 5DHR3-R
- 5DHR4-R
- 5DHR6-R

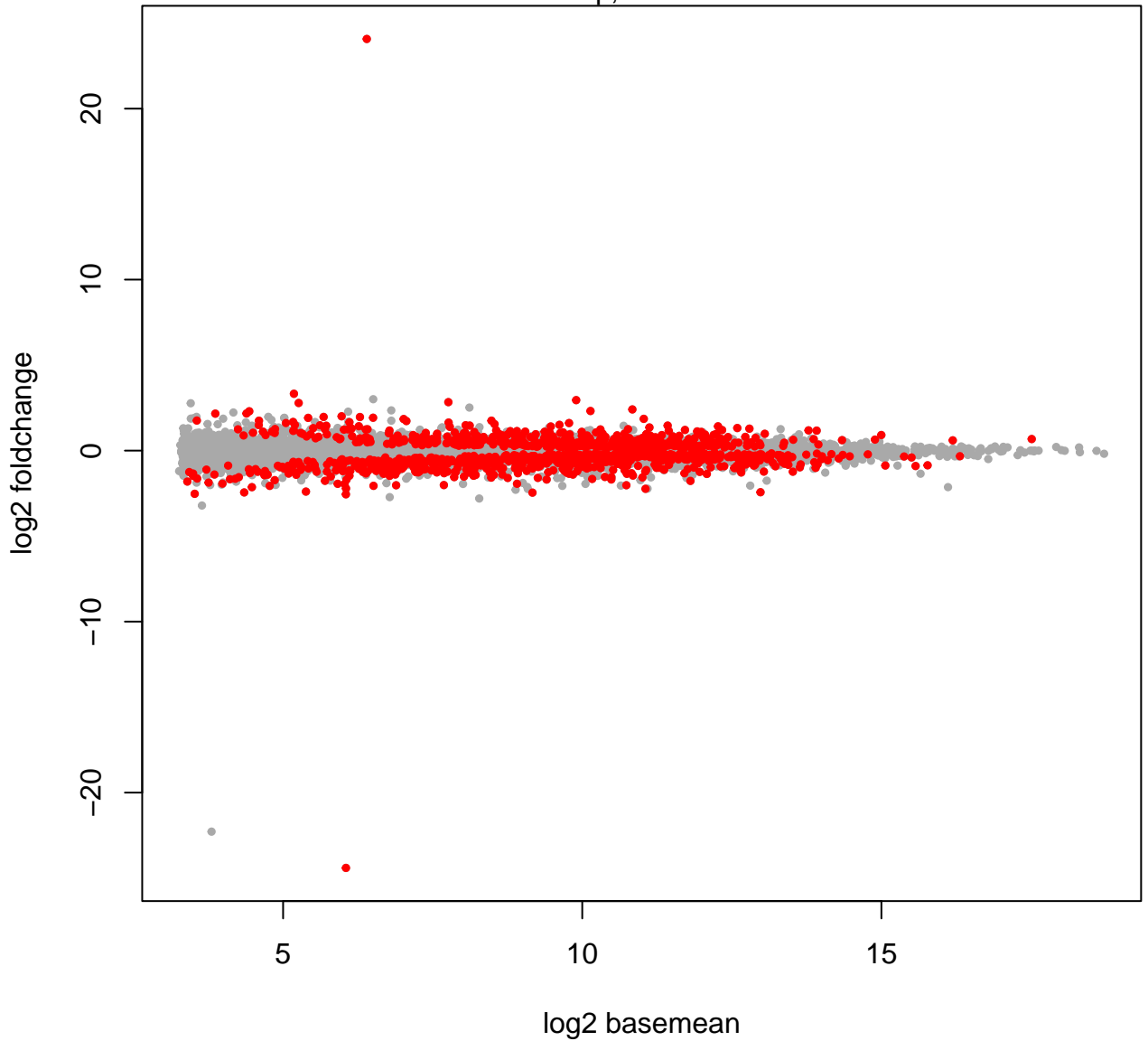
- 5DHR6-R
- 5DHR4-R
- 5DHR3-R
- 5DHR5-R
- 5DHR1-R
- 5DHR2-R
- 5DSWR3-R
- 5DSWR6-R
- 5DSWR2-R
- 5DSWR1-R
- 5DSWR5-R
- 5DSWR4-R
- 3DSWR3-R
- 3DSWR1-R
- 3DHR5-R
- 3DHR2-R
- 3DHR1-R
- 3DHR3-R
- 3DHR6-R
- 3DHR4-R
- 3DSWR5-R
- 3DSWR2-R
- 3DSWR6-R
- 3DSWR4-R

MDS plot

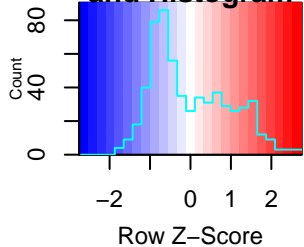


smear plot

518 up, 731 down

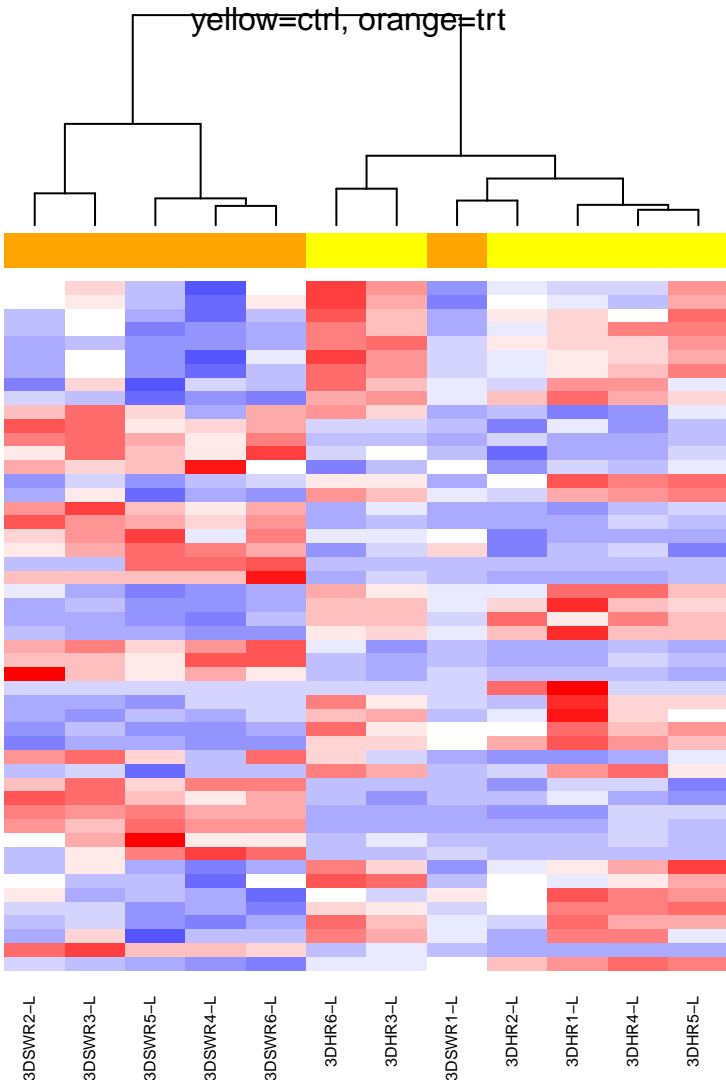


Color Key and Histogram

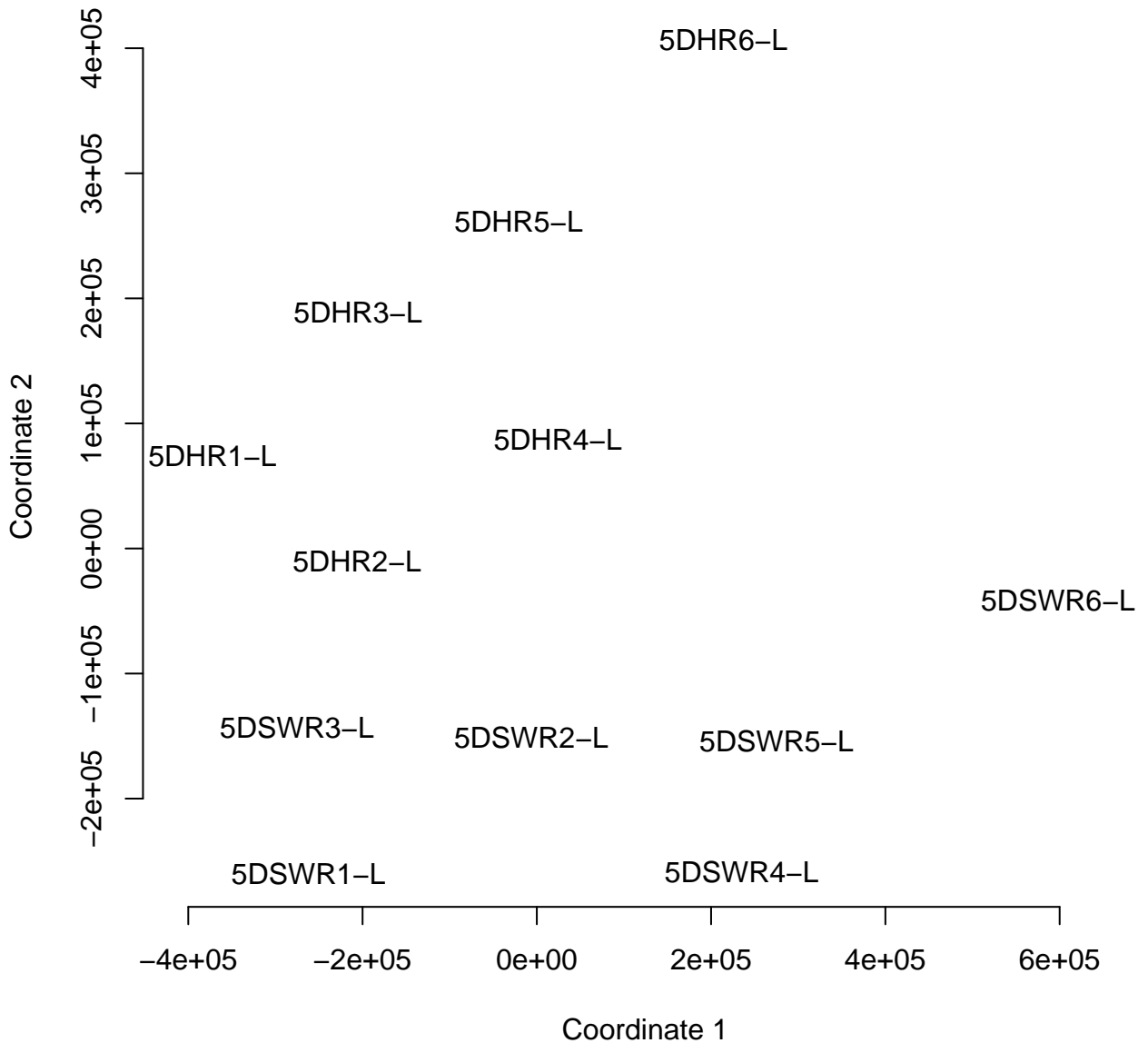


Top 50 genes by p-val

yellow=ctrl, orange=trt

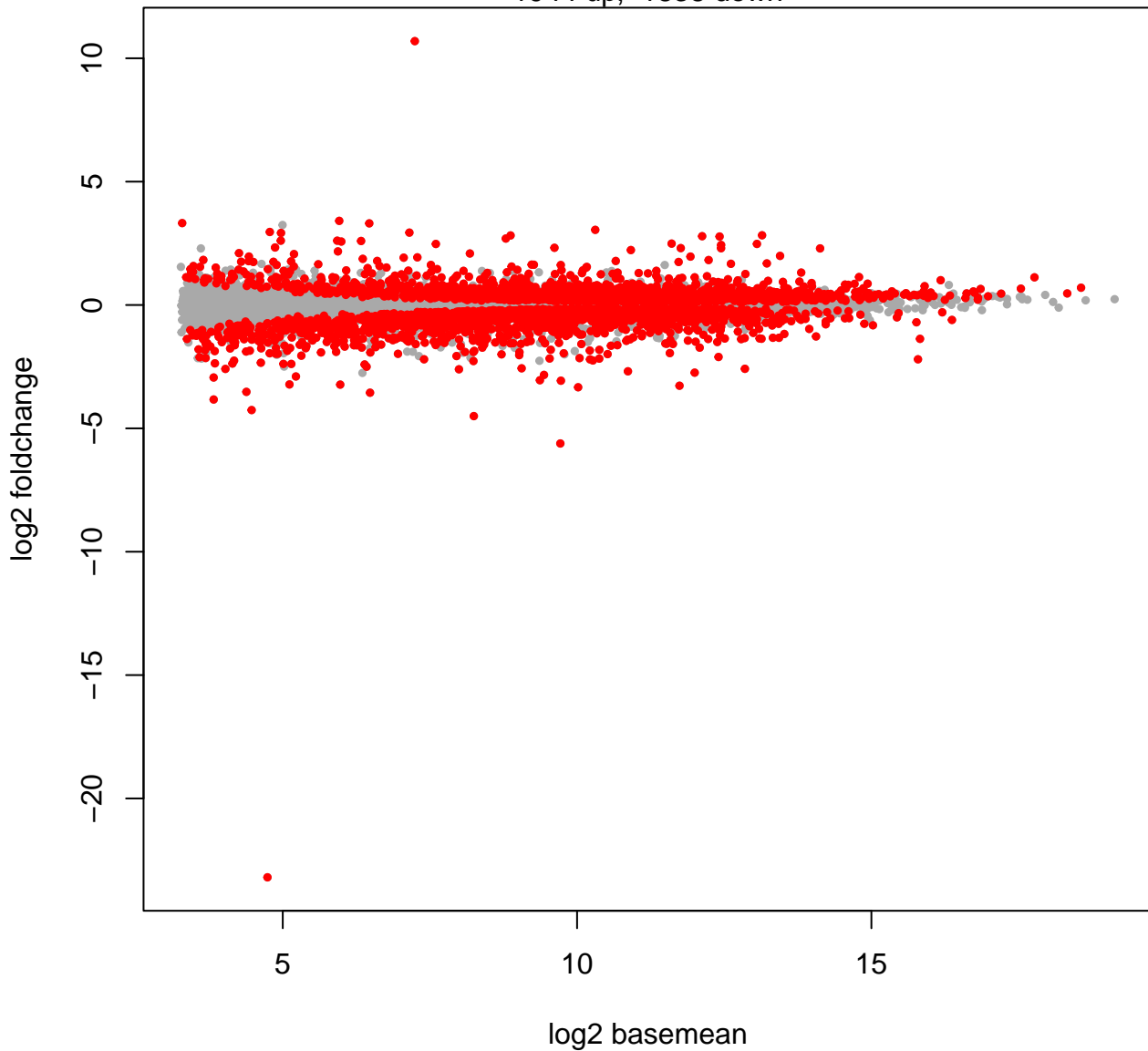


MDS plot

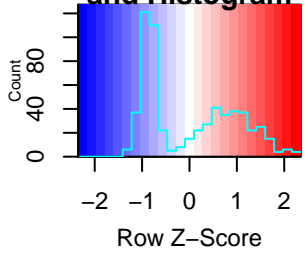


smear plot

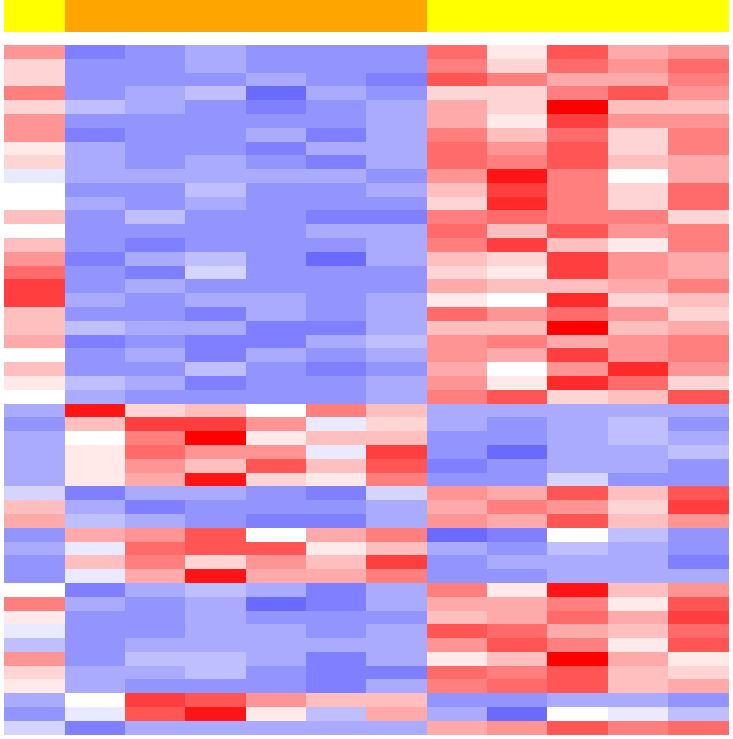
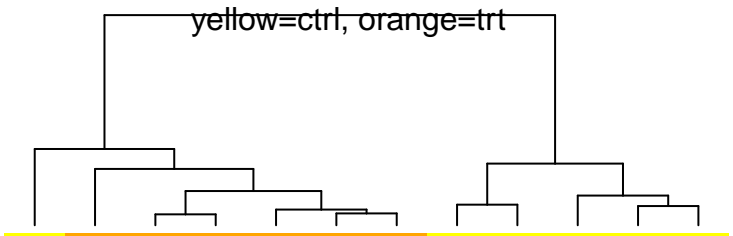
1944 up, 1838 down



Color Key and Histogram



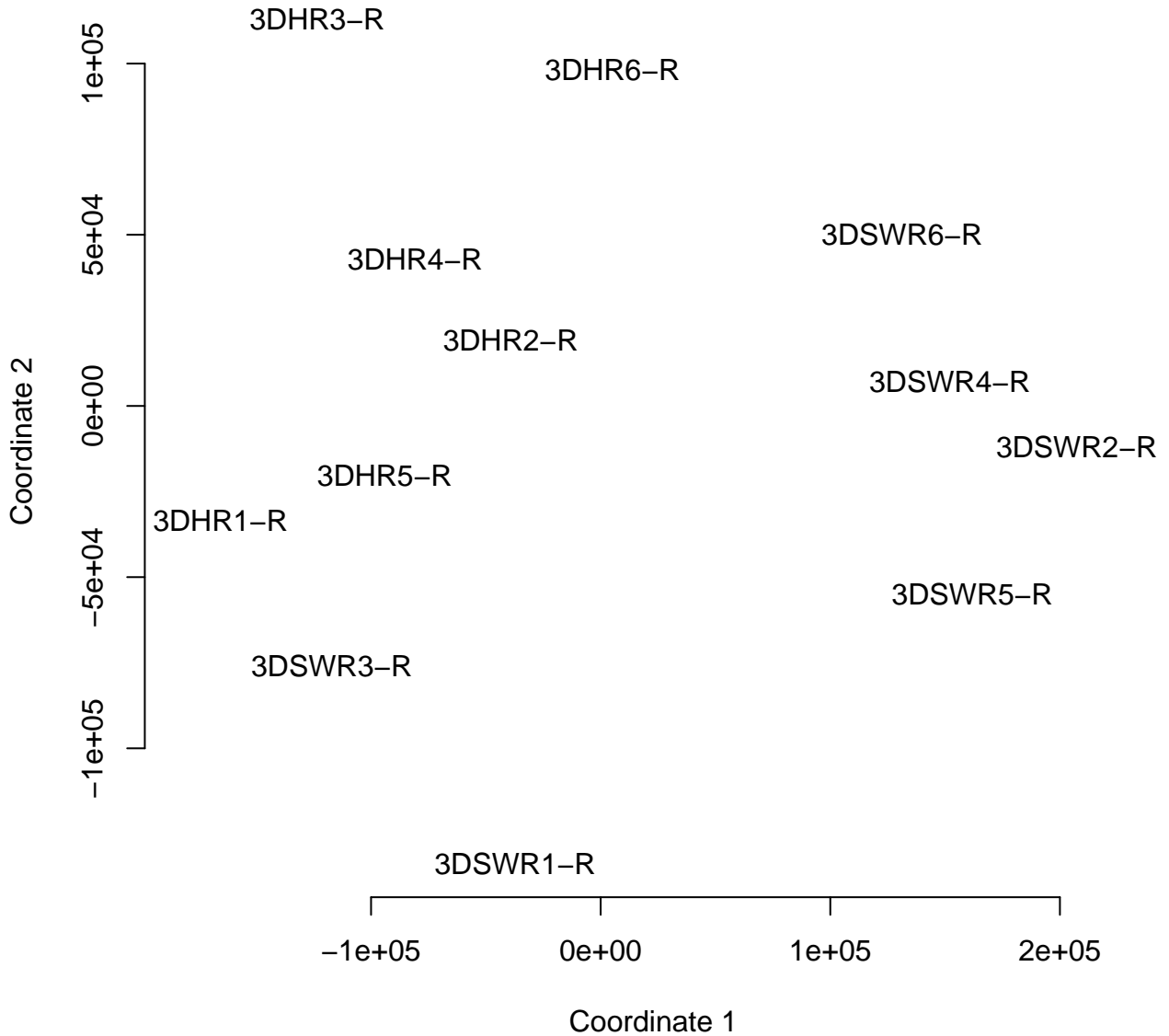
Top 50 genes by p-val



- AT1G22500
- AT5G38200
- AT3G49570
- AT5G19600
- AT5G13580
- AT1G73120
- AT2G26695
- AT4G36610
- AT3G50400
- AT5G26220
- AT1G23730
- AT3G05400
- AT2G33080
- AT5G13900
- AT2G31980
- AT5G12930
- AT2G40390
- AT5G38910
- AT4G35720
- AT5G23190
- AT5G50260
- AT1G56320
- AT1G70170
- AT4G39675
- AT5G08250
- AT1G12030
- AT5G48485
- AT1G25530
- AT5G07690
- AT2G21650
- AT2G47880
- AT1G70260
- AT3G12520
- AT1G78000
- AT4G33740
- AT3G20390
- AT5G23020
- AT5G43780
- AT3G54600
- AT5G11090
- AT5G01720
- AT4G04830
- AT3G49580
- AT5G48850
- AT5G51200
- AT1G36370
- AT3G08860
- AT4G13770
- AT4G12290
- AT4G34710

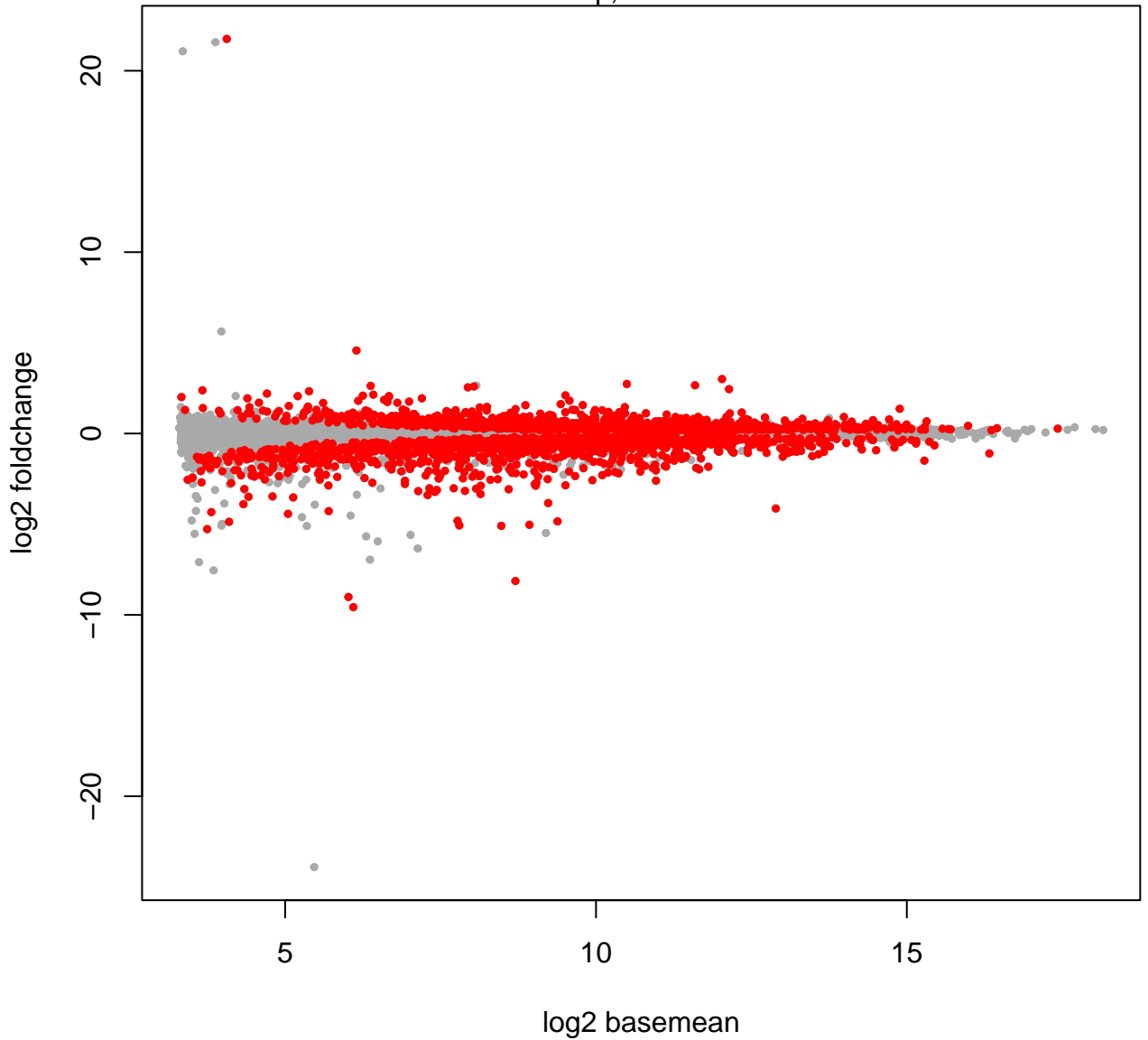
- 5DHR6-L
- 5DSWR6-L
- 5DSWR2-L
- 5DSWR4-L
- 5DSWR5-L
- 5DSWR3-L
- 5DSWR1-L
- 5DHR5-L
- 5DHR3-L
- 5DHR4-L
- 5DHR2-L
- 5DHR1-L

MDS plot

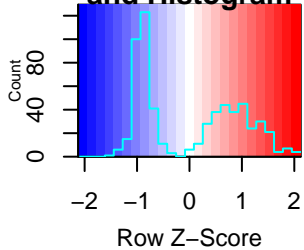


smear plot

1179 up, 1239 down

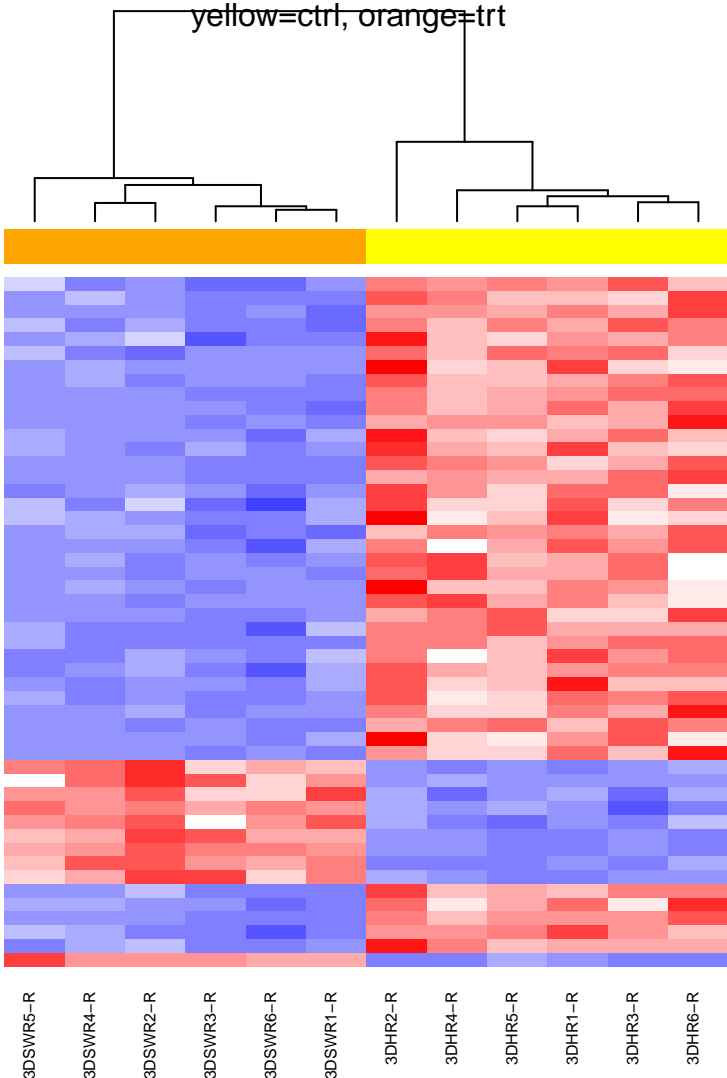


Color Key and Histogram

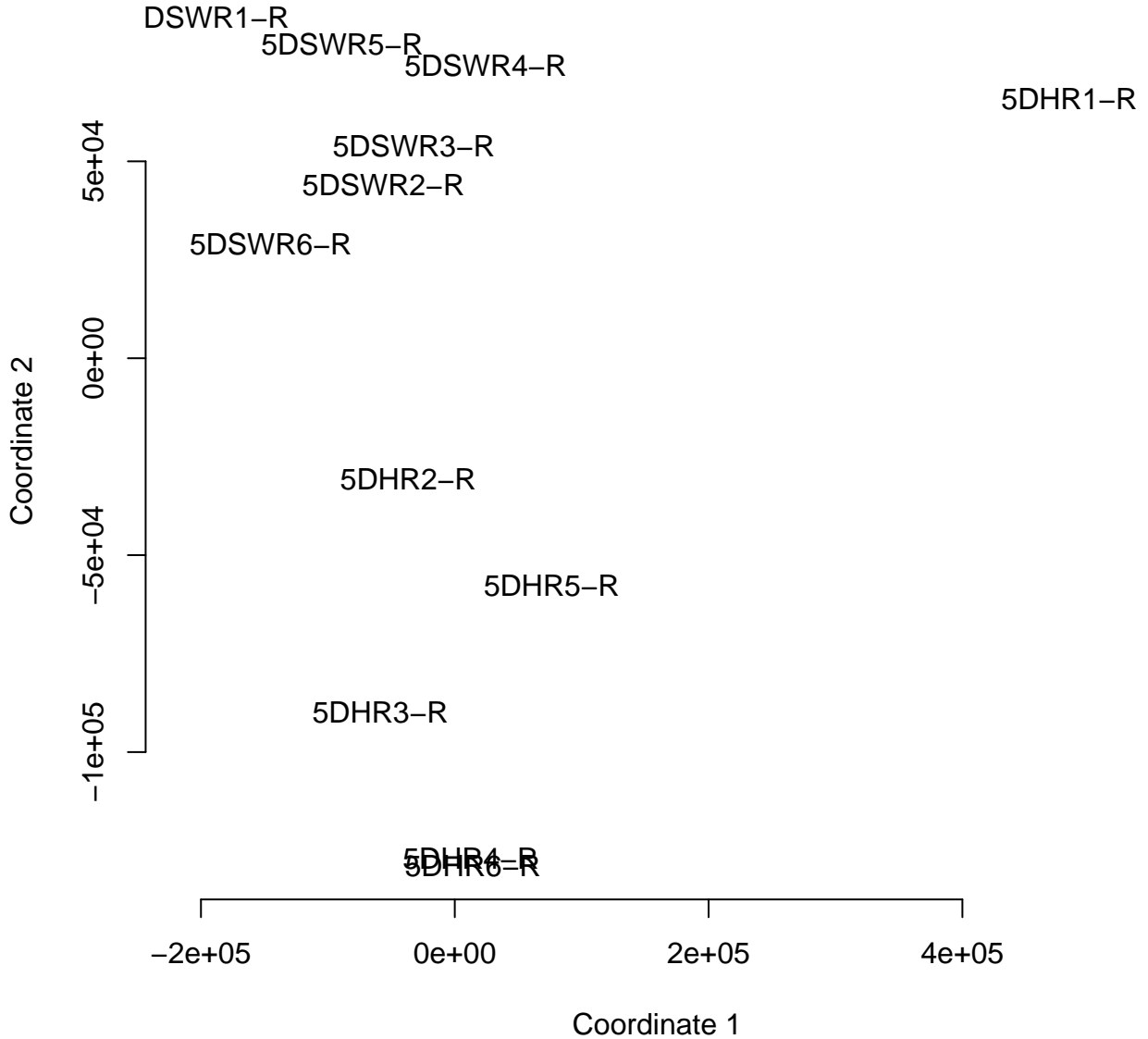


Top 50 genes by p-val

yellow=ctrl, orange=trt

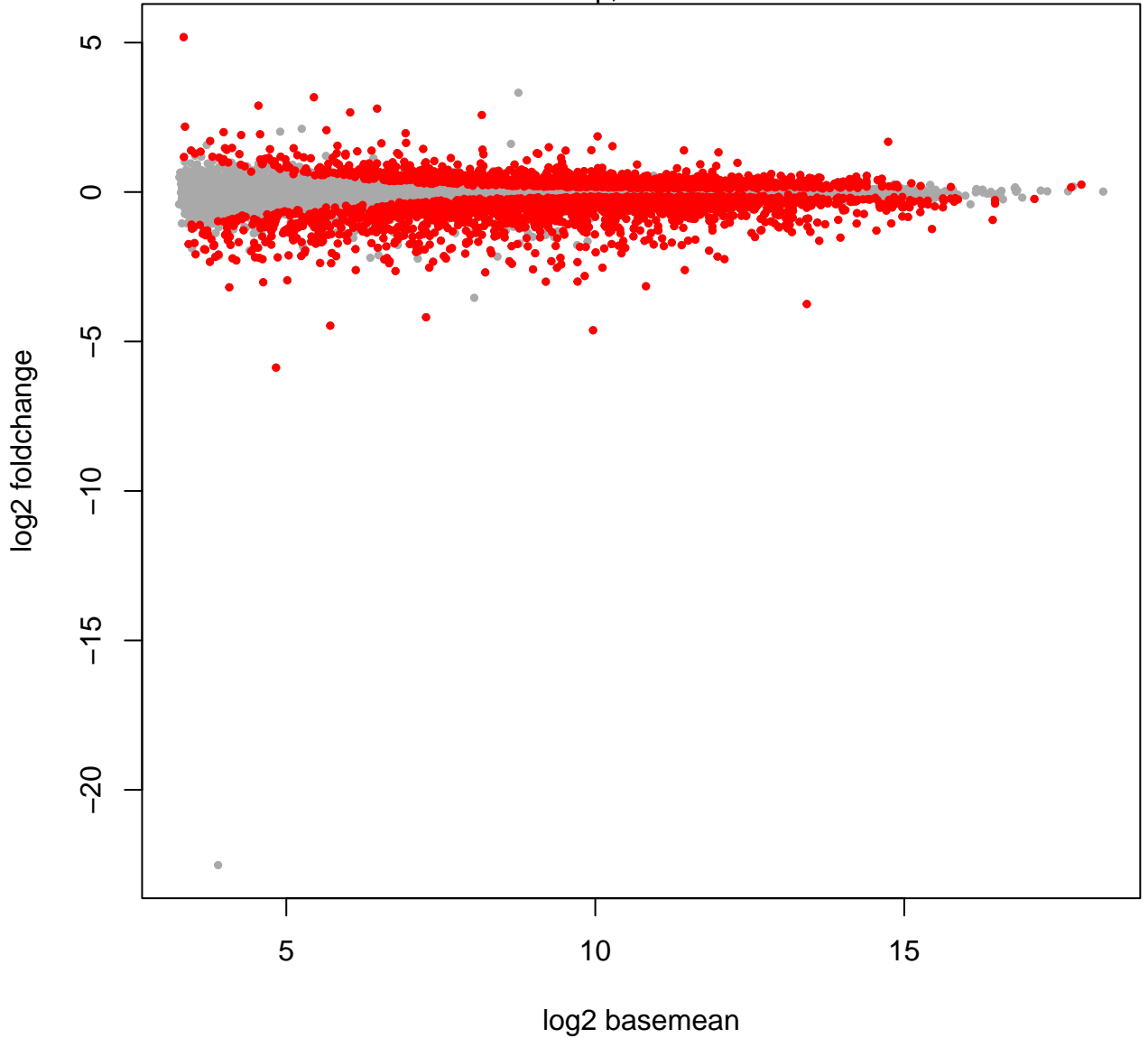


MDS plot

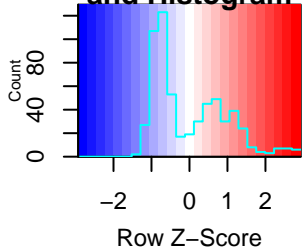


smear plot

1748 up, 2207 down

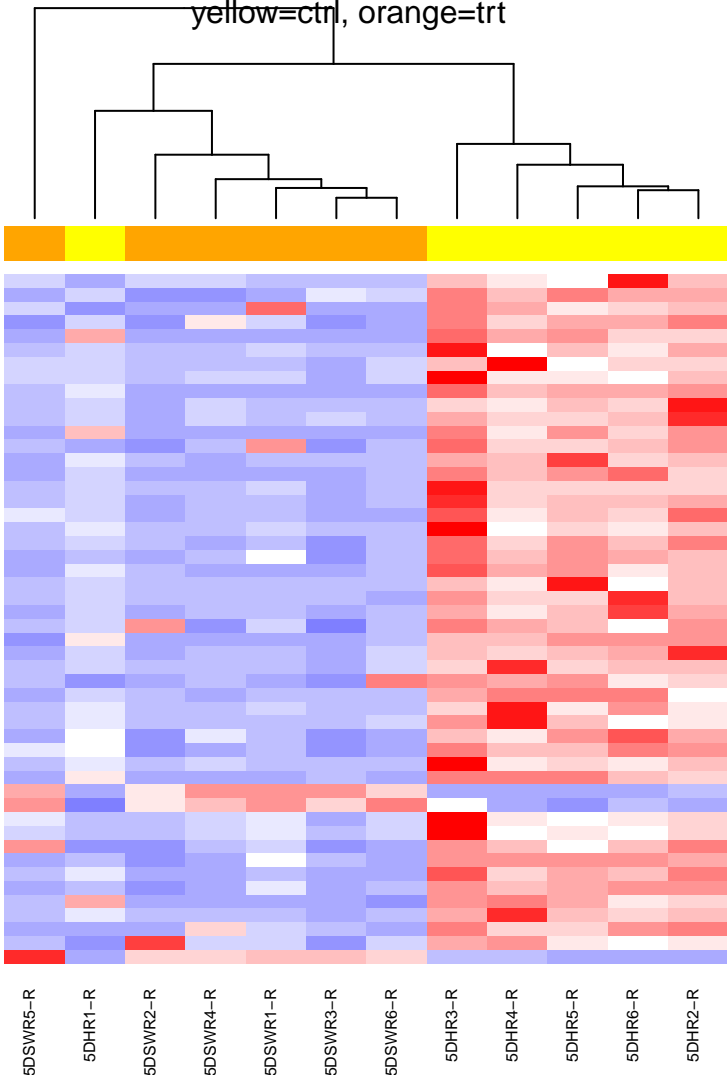


Color Key and Histogram

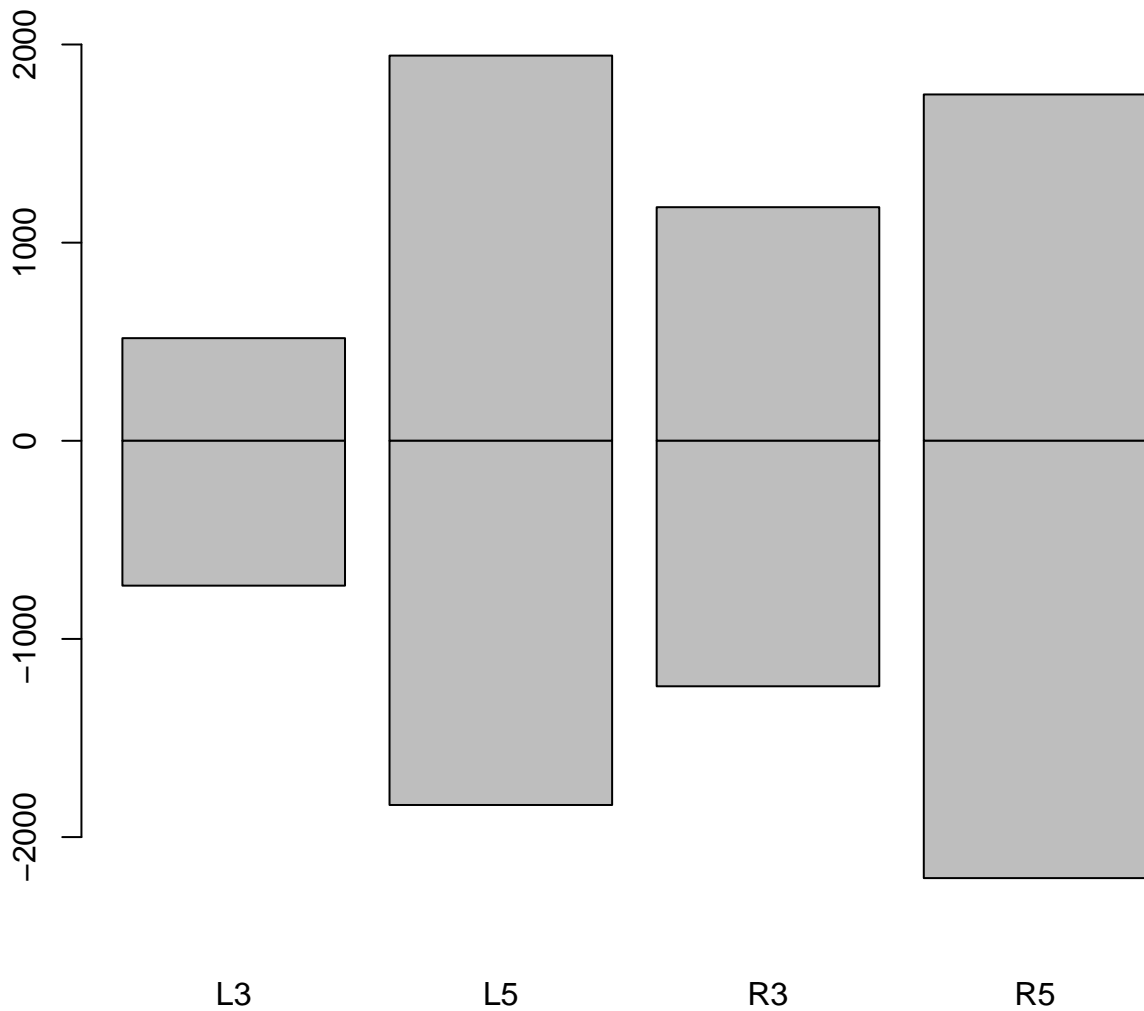


Top 50 genes by p-val

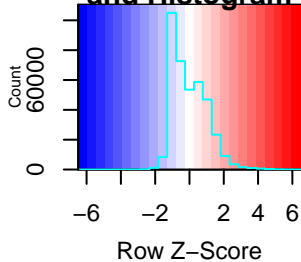
yellow=ctrl, orange=trt



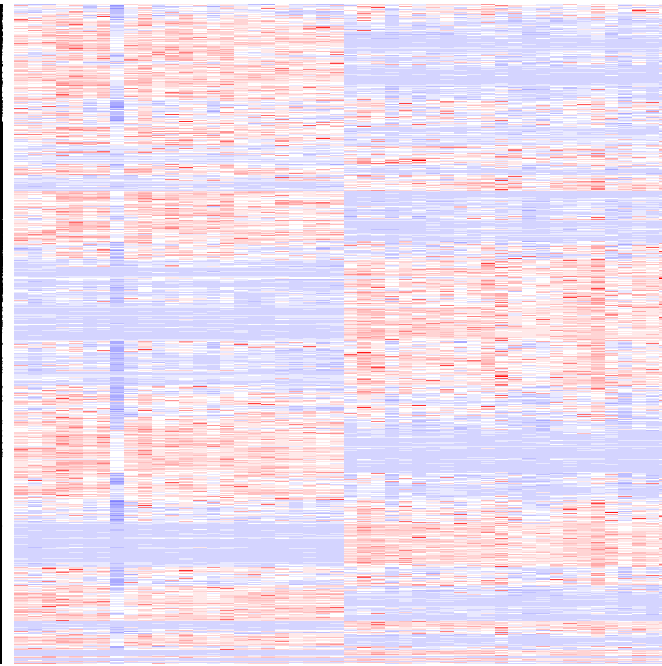
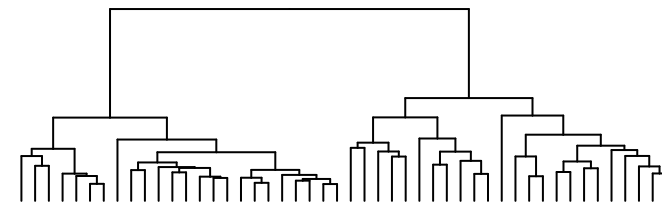
number of DEGs up/down



Color Key and Histogram



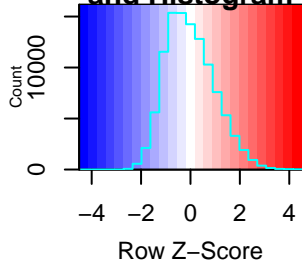
all samples



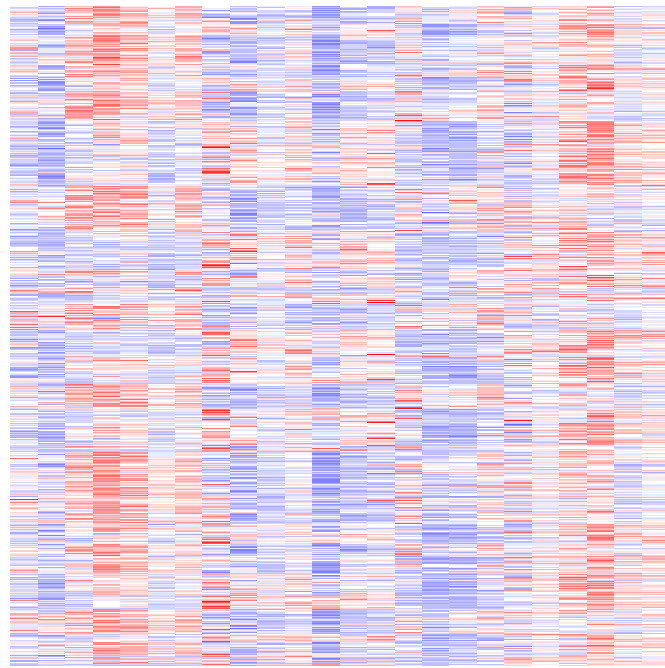
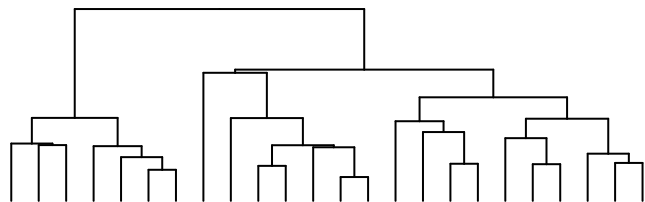
- AT4G23910
- AT2G19800
- AT5G55560
- AT4G07960
- AT5G17410
- AT3G06030
- AT4G05590
- AT4G12880
- AT2G23340
- AT1G27435
- AT1G35610
- AT5G55720
- AT4G31354
- AT2G13900
- AT5G01445
- AT5G42280
- AT3G04950
- AT5G56795
- AT1G09450
- AT5G06270
- AT2G29065
- AT3G51080
- AT5G23405
- AT5G16530
- AT1G21650
- AT1G10155
- AT5G51660
- AT4G36530
- AT3G51100
- AT5G12890
- AT4G05100
- AT1G29970
- AT2G34070
- AT5G65780
- AT3G25560
- AT5G34940
- AT1G67750
- AT2G15220
- AT4G23800
- AT1G34370
- AT5G41950
- AT1G43700
- AT4G17730
- AT5G44530
- AT4G24450
- AT1G71480
- AT1G80410
- AT3G48170
- AT1G45145
- AT5G59620
- AT5G09480
- AT5G15370
- AT3G22620
- AT3G21055
- AT2G39730

- 5DSWR6-R
- 5DSWR1-R
- 3DSWR5-R
- 3DSWR4-R
- 3DSWR3-R
- 3DHR4-R
- 3DHR2-R
- 3DHR3-R
- 5DSWR4-R
- 5DSWR5-R
- 5DHR5-R
- 5DHR6-R
- 5DSWR5-L
- 5DSWR1-L
- 5DSWR2-L
- 3DSWR6-L
- 3DHR5-L
- 3DHR6-L
- 5DHR6-L
- 3DSWR5-L
- 5DHR1-L
- 5DHR4-L
- 3DHR2-L
- 3DSWR1-L

Color Key and Histogram



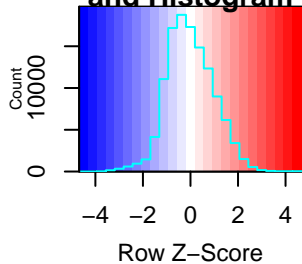
leaf samples



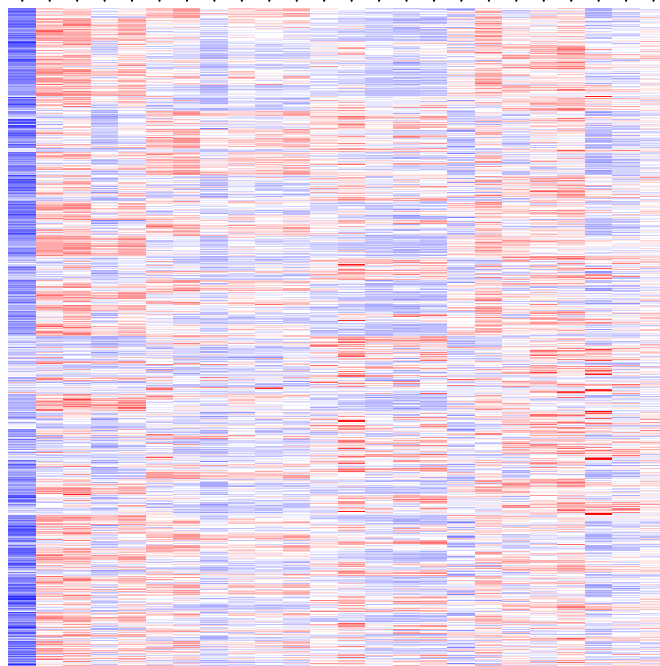
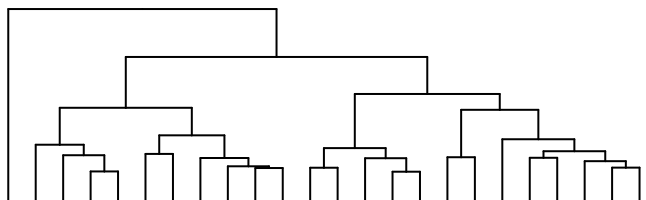
- AT1G56050
- AT5G46150
- AT2G47840
- AT5G45470
- AT2G44640
- AT1G12550
- AT2G36420
- AT1G53730
- AT2G40860
- AT1G66040
- AT4G15880
- AT3G24500
- AT1G70690
- AT1G51090
- AT3G52450
- AT3G61610
- AT4G27730
- AT5G24270
- AT5G51440
- AT2G06040
- AT5G65500
- AT1G18835
- AT4G10850
- AT4G22230
- AT4G14120
- AT4G12550
- AT3G15270
- AT3G15357
- AT4G12400
- AT1G55880
- AT5G44060
- AT3G10630
- AT2G37790
- AT4G35190
- AT2G42780
- AT5G62020
- AT5G13750
- AT1G54030
- AT4G12730
- AT5G16010
- AT5G27700
- AT1G05140
- AT2G21250
- AT5G65260
- AT2G35630
- AT5G59613
- AT3G24430
- AT3G18290
- AT1G43700
- AT3G47250
- AT3G01480
- AT1G76100
- AT5G35970
- AT1G07920
- AT2G39730

- 5DSWR6-L
- 5DSWR3-L
- 3DSWR3-L
- 5DSWR4-L
- 5DSWR1-L
- 5DSWR5-L
- 5DSWR2-L
- 3DHR1-L
- 5DHR6-L
- 3DSWR1-L
- 3DHR3-L
- 3DHR2-L
- 5DHR5-L
- 5DHR3-L
- 3DSWR2-L
- 3DSWR4-L
- 3DSWR5-L
- 3DSWR6-L
- 3DHR5-L
- 3DHR4-L
- 3DHR6-L
- 5DHR4-L
- 5DHR1-L
- 5DHR2-L

Color Key and Histogram



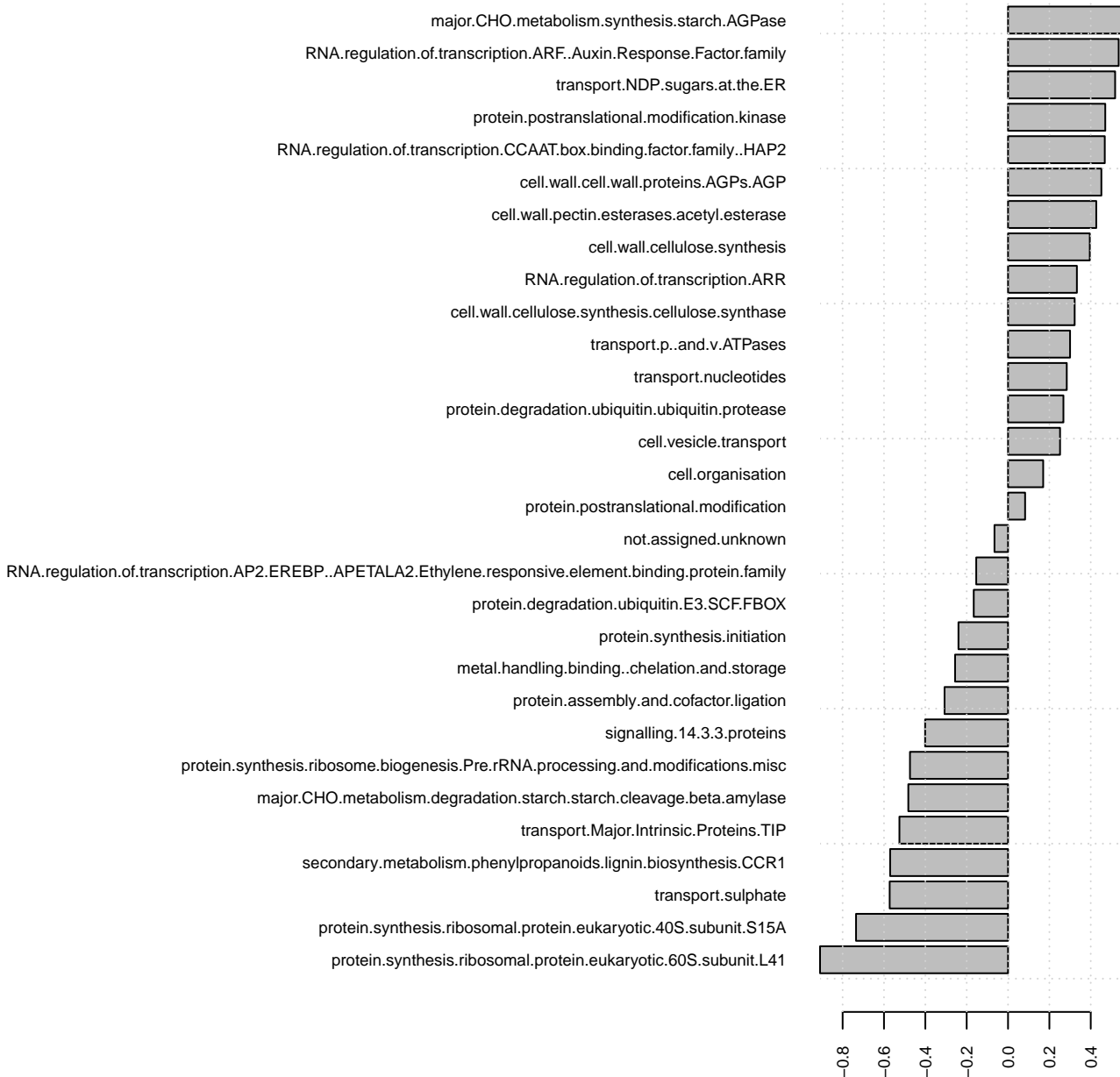
root samples



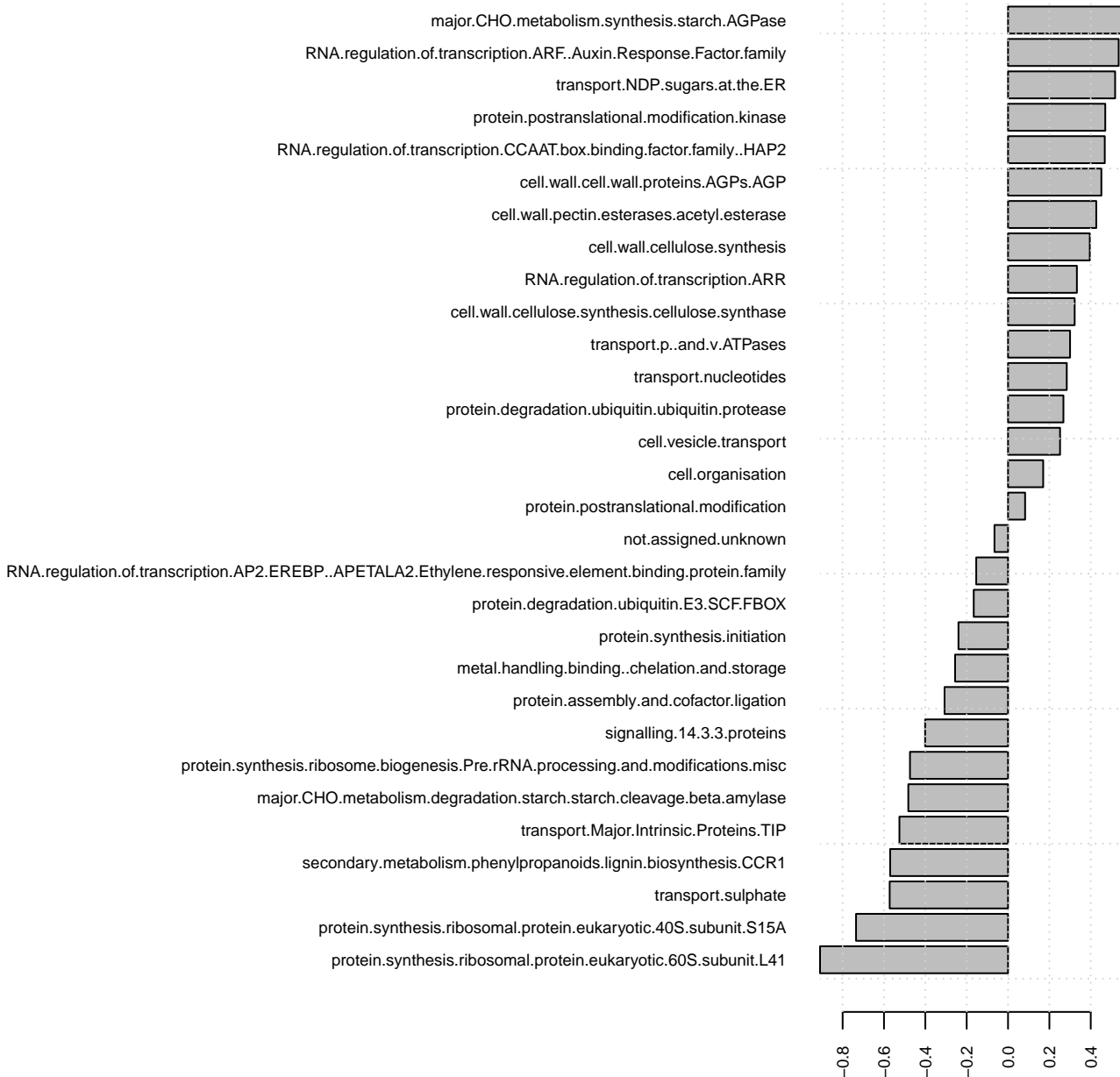
AT3G18640
AT5G22940
AT2G43020
AT3G26210
AT1G62930
AT1G66700
AT1G10820
AT2G30990
AT2G05630
AT5G08040
AT1G59740
AT3G57660
AT4G24760
AT5G06740
AT5G17010
AT5G66710
AT1G66760
AT2G20030
AT1G65470
AT3G49050
AT5G24410
AT1G64170
AT3G24030
AT1G17850
AT3G10470
AT2G35730
AT2G32030
AT3G02610
AT1G31040
AT5G53870
AT1G02450
AT2G22460
AT1G20180
AT3G18300
AT5G01540
AT4G18280
AT3G25587
AT1G77990
AT5G37000
AT5G62170
AT2G03370
AT2G17705
AT1G24140
AT5G60930
AT1G30330
AT4G12290
AT5G11790
AT5G17460
AT3G25930
AT2G45470
AT3G10410
AT2G41740
AT3G50370
AT4G13510
AT4G14880
AT2G43150

5DHR1-R
3DSWR2-R
3DSWR5-R
3DSWR6-R
3DSWR4-R
5DSWR6-R
5DSWR1-R
5DSWR3-R
5DSWR4-R
5DSWR2-R
5DSWR5-R
5DHR2-R
5DHR3-R
5DHR5-R
5DHR6-R
5DHR4-R
3DSWR3-R
3DSWR1-R
3DHR6-R
3DHR1-R
3DHR2-R
3DHR3-R
3DHR4-R
3DHR5-R

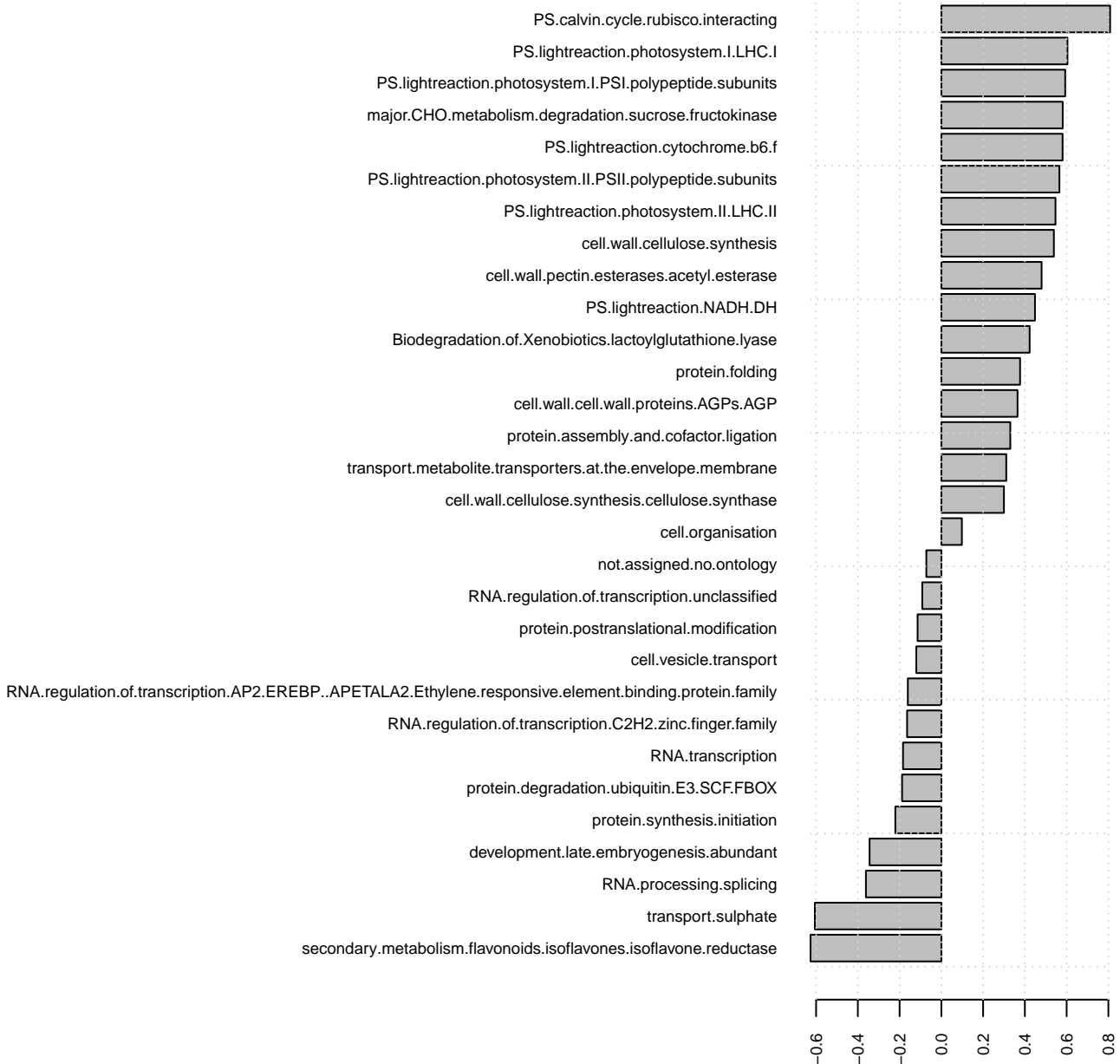
Enrichment score



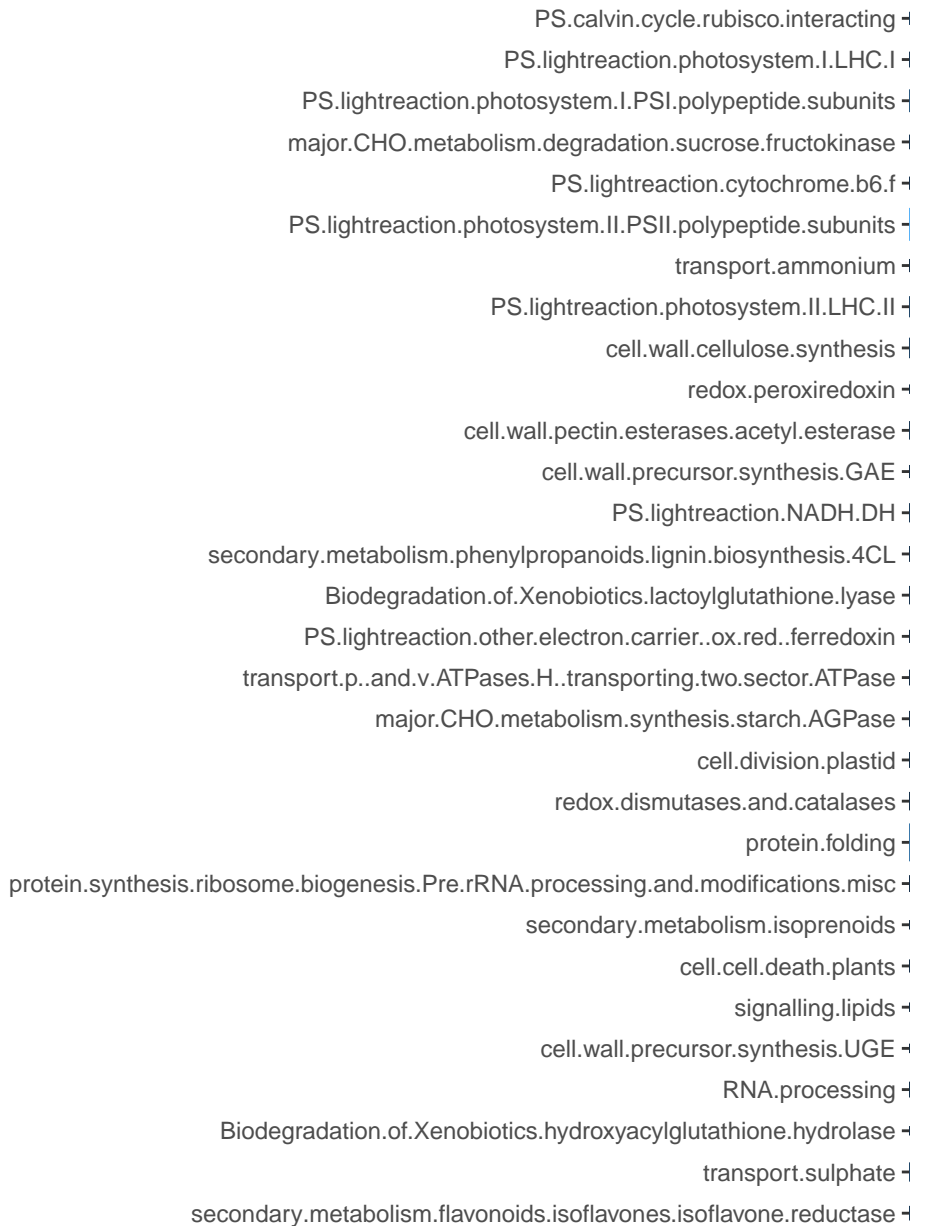
Enrichment score



Enrichment score



set



$-\log_{10}(\text{top } \$p.\text{adjustANOVA})$



6

4

2

setSize



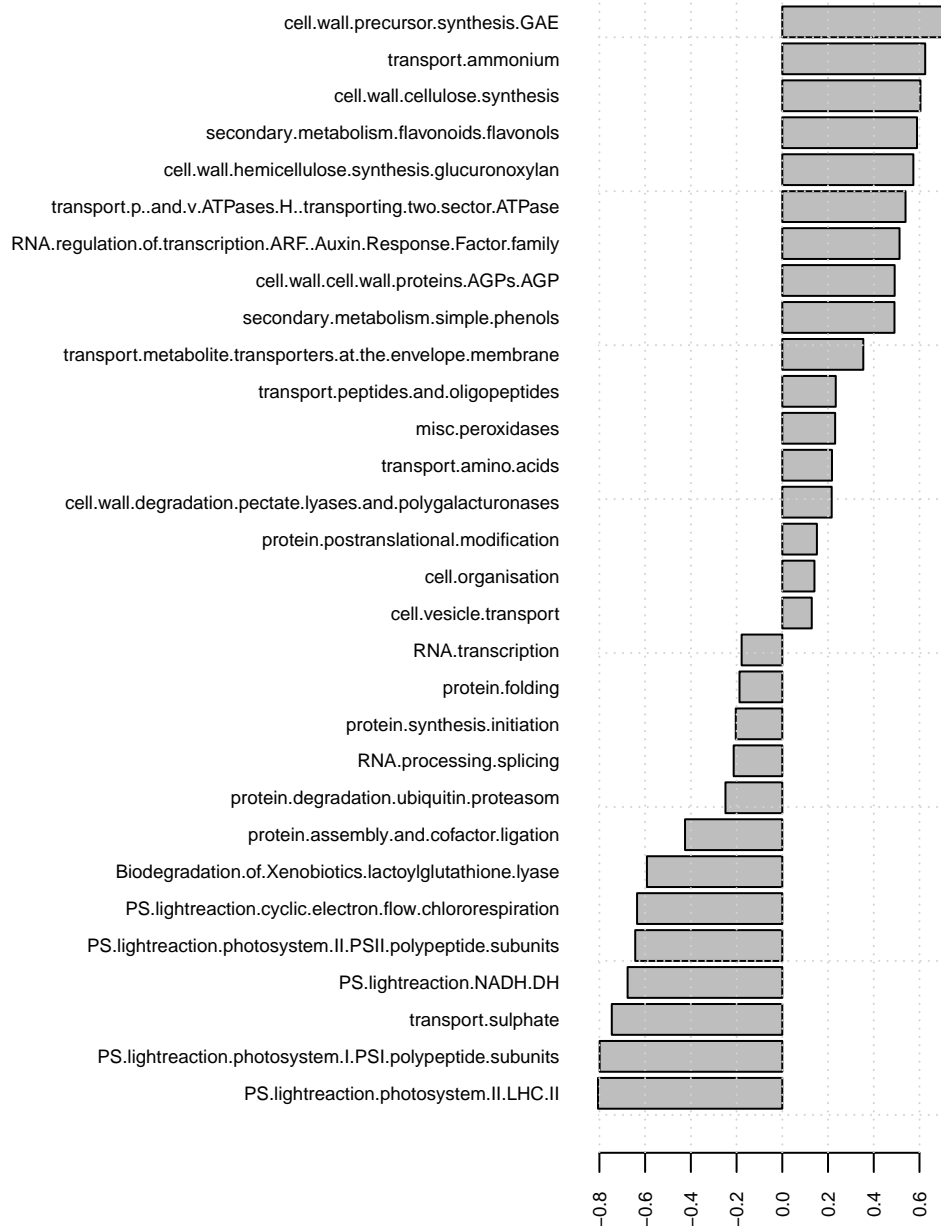
20

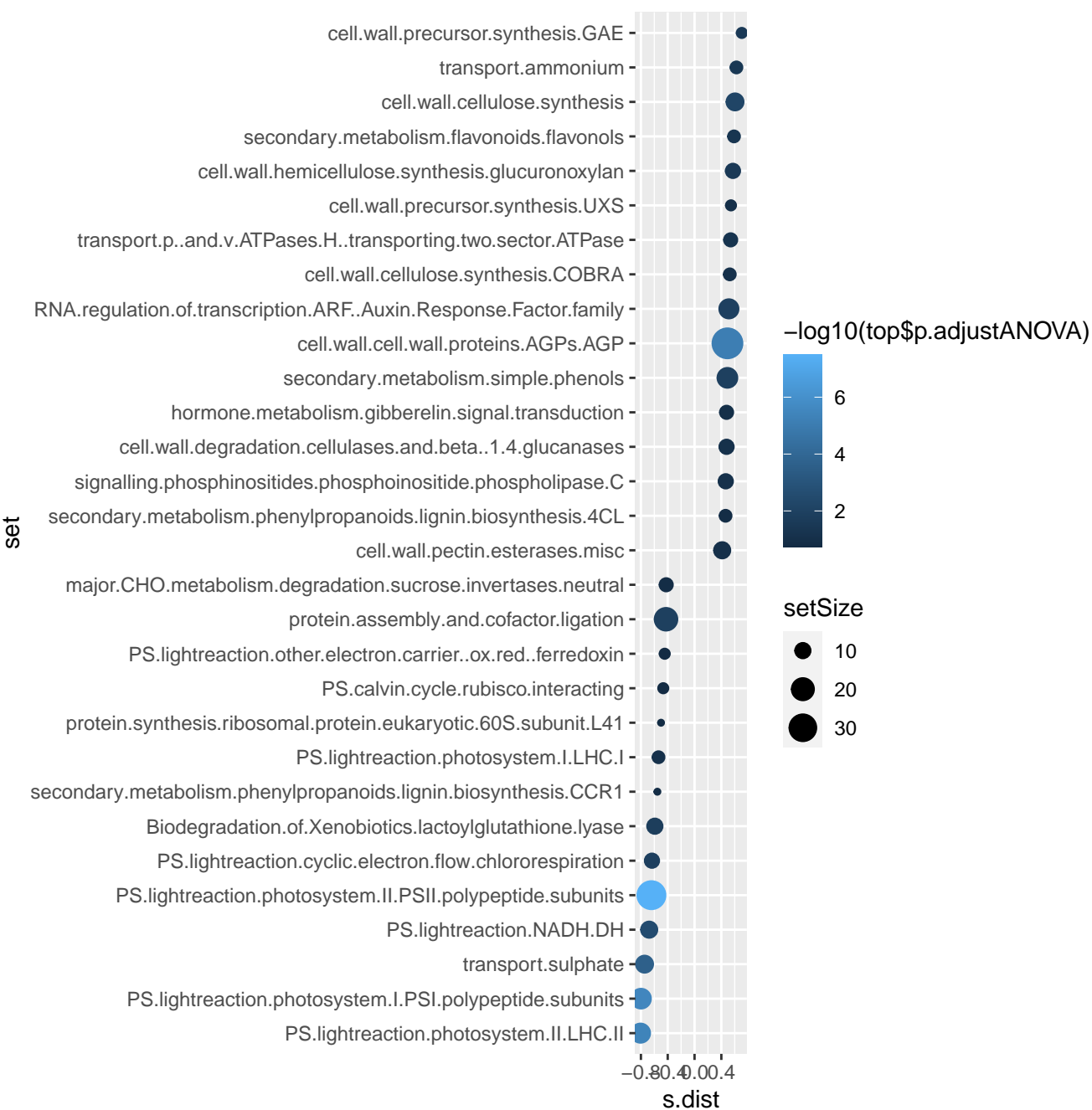
40

60

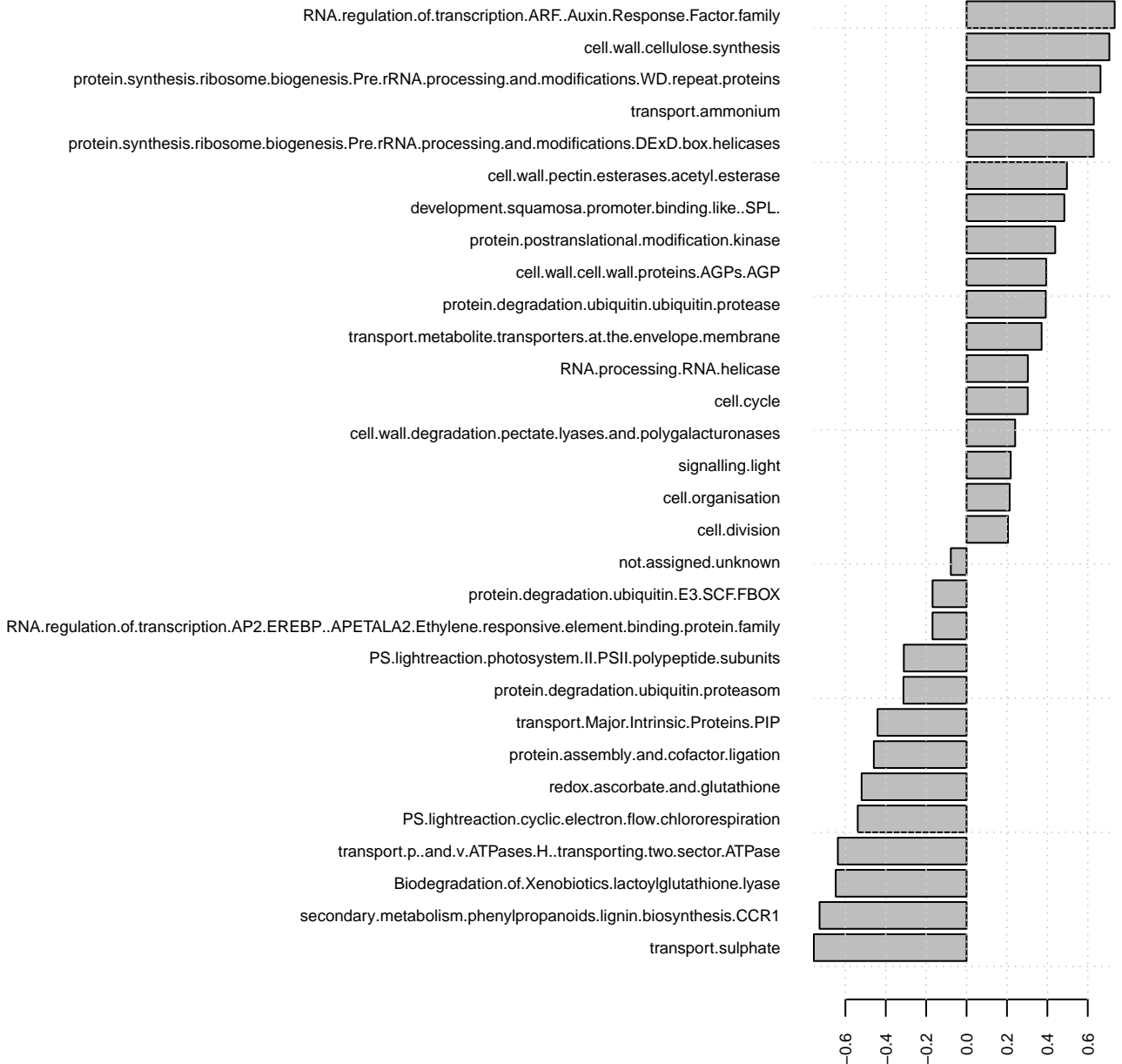
0.01
s.dist

Enrichment score



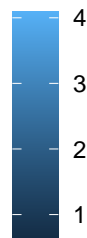


Enrichment score

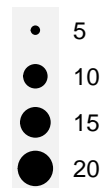




$-\log_{10}(\text{top}\$p.\text{adjusted})$



setSize



s.dist

Enrichment score

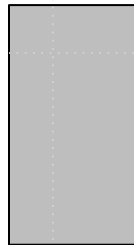
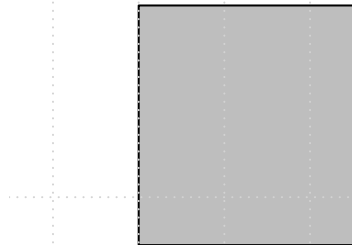
redox.dismutases.and.catalases

redox.ascorbate.and.glutathione.ascorbate

redox.glutaredoxins

misc.peroxidases

-0.1 0.0 0.1 0.2



redox.ascorbate.and.glutathione.ascorbate

redox.glutaredoxins

misc.peroxidases

redox.dismutases.and.catalases

-10000 0 5000

