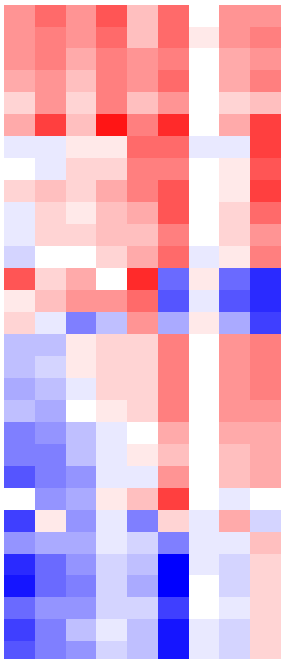
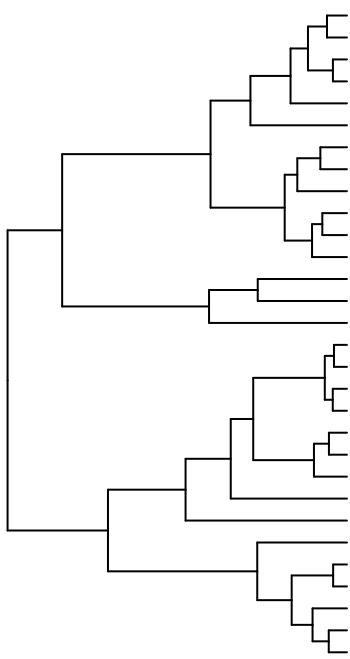
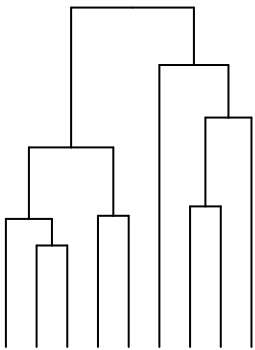
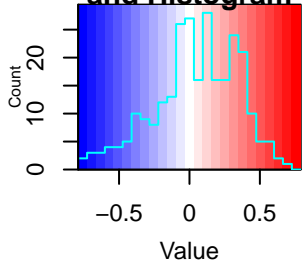


# Color Key and Histogram



s.CD14\_.\_Mono\_.\_CC  
 s.FCGR3A\_.\_Mono  
 s.DC  
 s.Macrophage  
 s.CD14\_.\_Mono  
 s.NK.2.\_IL7R\_.\_  
 s.T  
 s.B  
 s.NK.1\_.\_FCGRA3A\_

- GOBP ANTIGEN PROCESSING AND PRESENTATION OF PEPTIDE ANTIGEN
- GOBP ANTIGEN PROCESSING AND PRESENTATION VIA MHC CLASS IB
- GOBP ANTIGEN PROCESSING AND PRESENTATION OF ENDOGENOUS PEPTIDES
- GOBP ANTIGEN PROCESSING AND PRESENTATION OF ENDOGENOUS ANTIGENS
- GOBP POSITIVE REGULATION OF T CELL MEDIATED CYTOTOXICITY
- GOCC MHC CLASS I PROTEIN COMPLEX
- GOCC MHC CLASS II PROTEIN COMPLEX
- GOMF MHC CLASS II PROTEIN COMPLEX BINDING
- GOCC MHC PROTEIN COMPLEX
- GOCC LUMENAL SIDE OF ENDOPLASMIC RETICULUM MEMBRANE
- GOCC LUMENAL SIDE OF MEMBRANE
- GOBP PEPTIDE ANTIGEN ASSEMBLY WITH MHC PROTEIN COMPLEX
- GOCC TRANSCRIPTION FACTOR AP 1 COMPLEX
- GOBP RESPONSE TO CORTICOSTERONE
- GOBP NUCLEOTIDE BINDING OLIGOMERIZATION DOMAIN CONTAINING 1 SIGNAL PEPTIDE
- GOMF NAD P H DEHYDROGENASE QUINONE ACTIVITY
- GOCC NADH DEHYDROGENASE COMPLEX
- GOBP PROTON MOTIVE FORCE DRIVEN ATP SYNTHESIS
- GOMF OXIDOREDUCTION DRIVEN ACTIVE TRANSMEMBRANE TRANSPORT
- GOCC CYTOCHROME COMPLEX
- GOBP MITOCHONDRIAL ELECTRON TRANSPORT CYTOCHROME C TO OXIDASE
- GOCC RESPIRATORY CHAIN COMPLEX IV
- GOBP GRANZYME MEDIATED PROGRAMMED CELL DEATH SIGNALING PATHWAY
- GOBP PROTEIN FOLDING IN ENDOPLASMIC RETICULUM
- GOCC POLYSOME
- GOCC CYTOSOLIC LARGE RIBOSOMAL SUBUNIT
- GOCC CYTOSOLIC SMALL RIBOSOMAL SUBUNIT
- GOBP CYTOPLASMIC TRANSLATION
- GOCC POLYSOMAL RIBOSOME
- GOCC CYTOSOLIC RIBOSOME