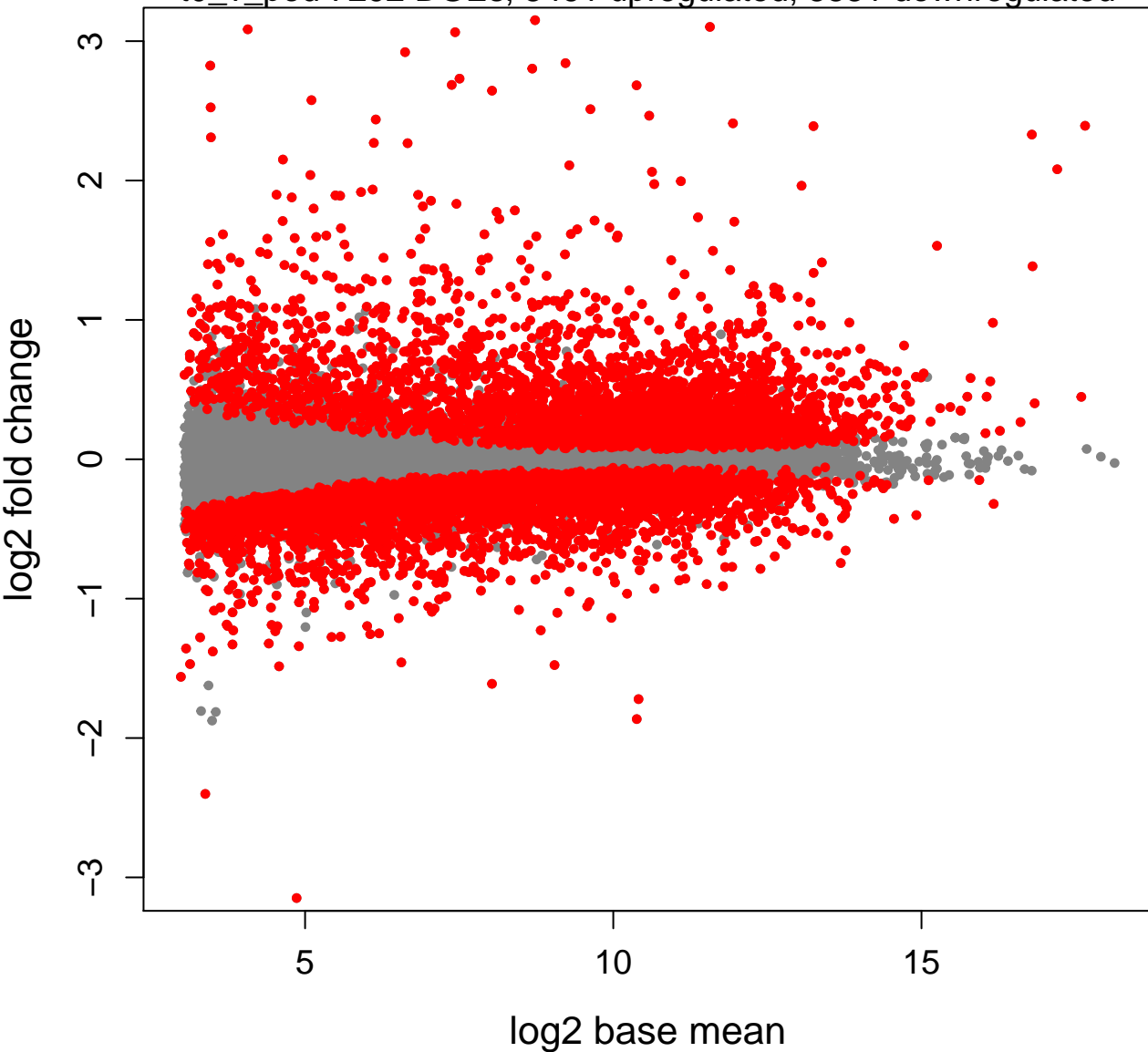
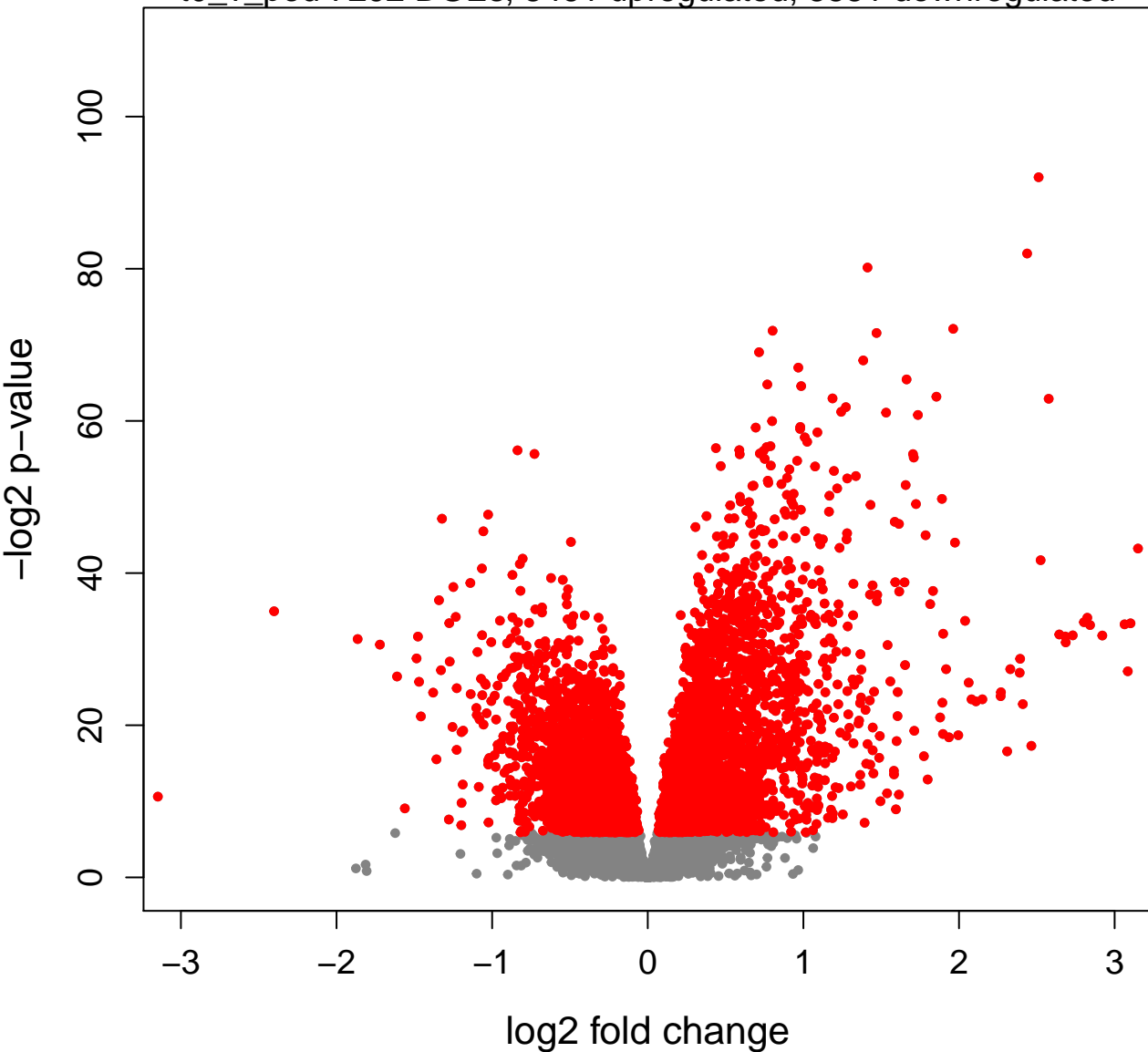


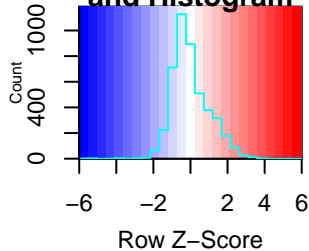
t0_v_pod 7292 DGEs, 3461 upregulated, 3831 downregulated



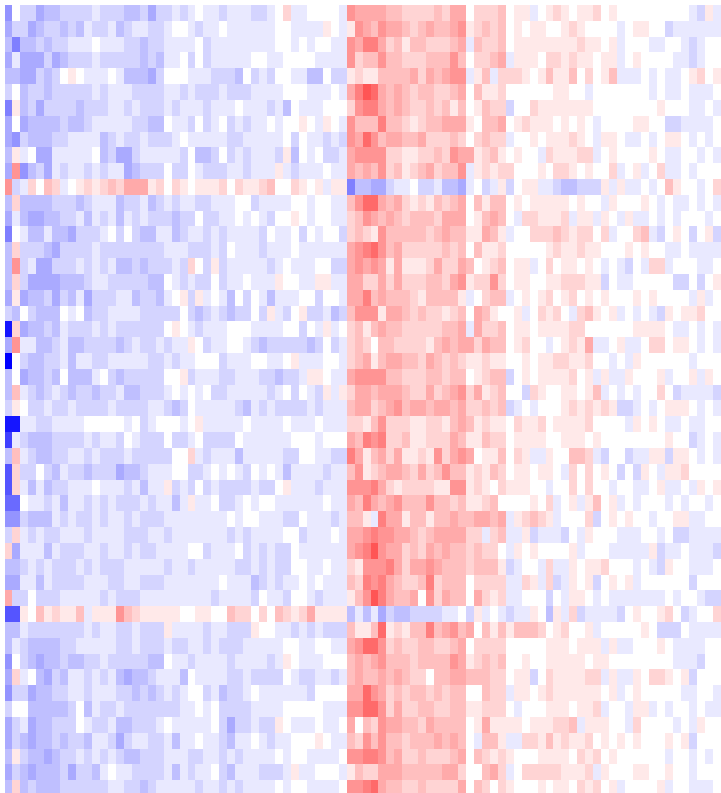
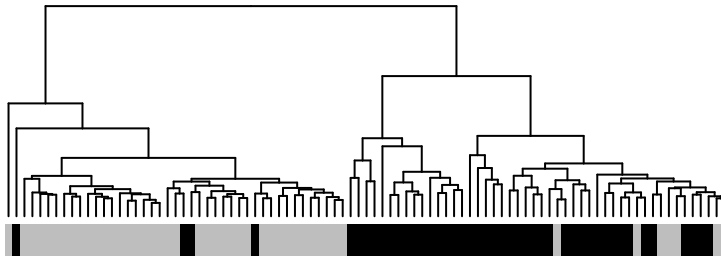
t0_v_pod 7292 DGEs, 3461 upregulated, 3831 downregulated



Color Key and Histogram



Top 50 genes



- ENSG00000107745.19 MICU1
- ENSG00000138413.13 IDH1
- ENSG00000141401.12 IMPA2
- ENSG00000135838.13 NPL
- ENSG00000161944.16 ASGR2
- ENSG00000183019.7 MCEMP1
- ENSG00000168615.12 ADAM9
- ENSG00000186205.13 MARC1
- ENSG00000163803.13 PLB1
- ENSG00000159348.13 CYB5R1
- ENSG00000140848.17 CPNE2
- ENSG00000148019.13 CEP78
- ENSG00000197006.14 METTL9
- ENSG00000138061.12 CYP1B1
- ENSG00000164125.15 GASK1B
- ENSG00000163221.9 S100A12
- ENSG00000130830.15 MPP1
- ENSG00000143162.9 CREG1
- ENSG00000146592.17 CREB5
- ENSG00000184557.4 SOCS3
- ENSG00000008394.13 MGST1
- ENSG00000110013.13 SIAE
- ENSG0000014257.16 ACPD
- ENSG00000156414.19 TDRD9
- ENSG00000169385.3 RNASE2
- ENSG00000108950.12 FAM20A
- ENSG00000103876.12 FAH
- ENSG00000256751.6 PLBD1-AS1
- ENSG00000187837.3 H1-2
- ENSG00000112290.13 WASF1
- ENSG00000131187.9 F12
- ENSG00000163251.4 FZD5
- ENSG00000166033.13 HTRA1
- ENSG00000170439.7 METTL7B
- ENSG00000132170.21 PPARG
- ENSG00000136160.17 EDNRB
- ENSG00000157064.11 NMNAT2
- ENSG00000137869.15 CYP19A1
- ENSG00000136052.9 SLC41A2
- ENSG000000087116.16 ADAMTS2
- ENSG00000142657.21 PGD
- ENSG00000121316.11 PLBD1
- ENSG000000064601.18 CTSA
- ENSG00000198053.11 SIRPA
- ENSG00000135636.14 DYSF
- ENSG0000010327.10 STAB1
- ENSG00000125810.10 CD93
- ENSG00000163220.11 S100A9
- ENSG000000038427.16 VCAN
- ENSG00000143546.10 S100A8

- RG046-T0
- RG866-T0
- RG071-T0
- RG002-T0
- RG818-T0
- RG057-T0
- RG019-T0
- RG049-T0
- RG086-T0
- RG076-T0
- RG081-T0
- RG034-P0D
- RG820-T0
- RG050-T0
- RG064-T0
- RG048-T0
- RG801-T0
- RG840-T0
- RG408-T0
- RG867-T0
- RG827-T0
- RG048-P0D
- RG846-P0D
- RG073-P0D
- RG052-P0D
- RG800-P0D
- RG012-P0D
- RG013-P0D
- RG866-P0D
- RG066-P0D
- RG822-P0D
- RG057-P0D
- RG831-P0D
- RG048-P0D
- RG003-P0D
- RG834-P0D
- RG827-P0D
- RG818-P0D
- RG847-P0D
- RG862-P0D
- RG822-T0
- RG087-T0
- RG023-P0D
- RG019-P0D
- RG813-P0D