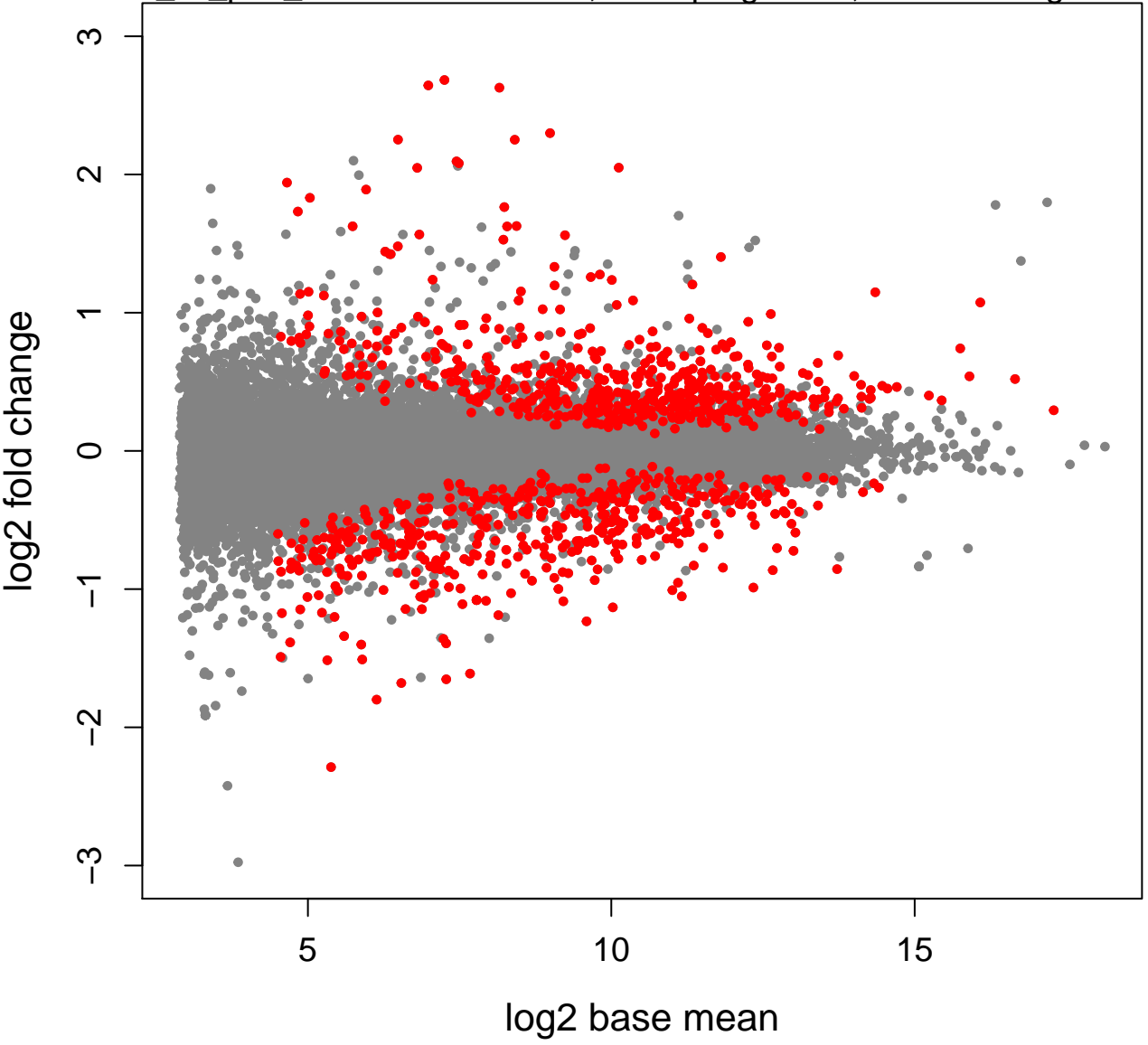
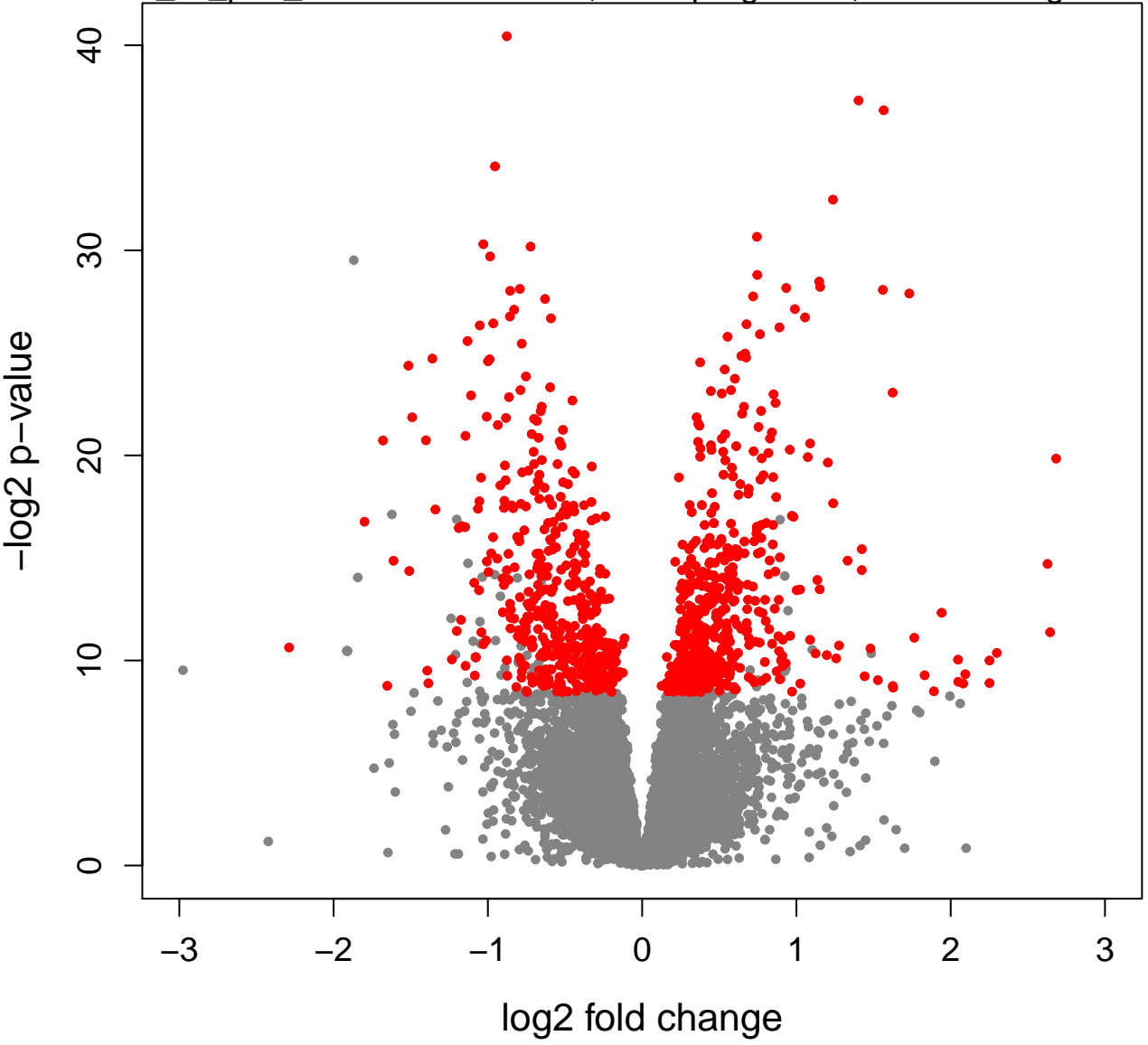


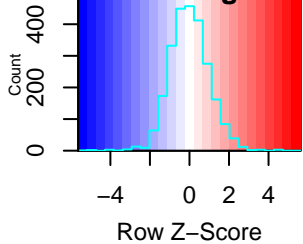
t0_vs_pod_lowCRP 985 DGEs, 537 upregulated, 448 downregulated



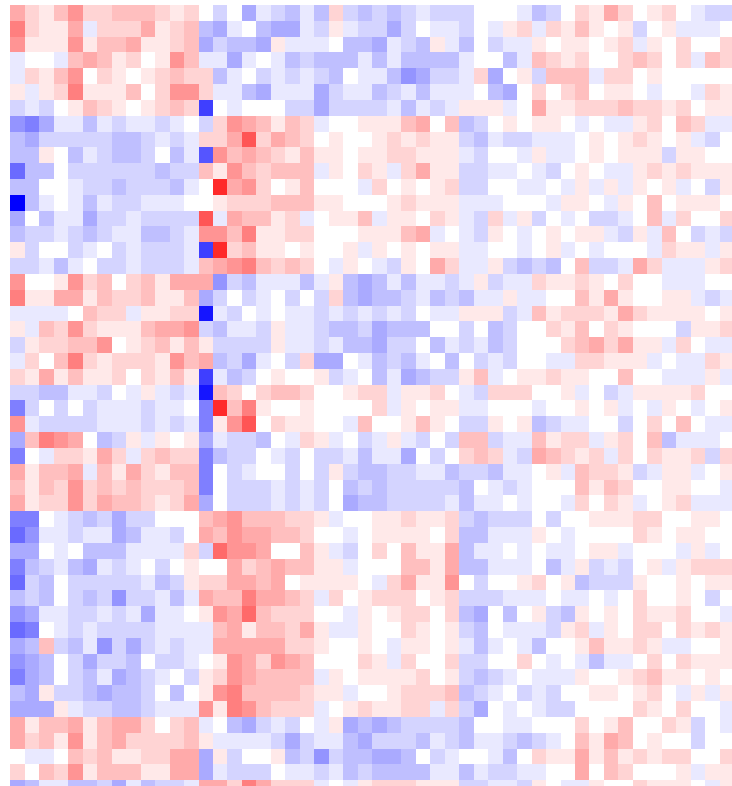
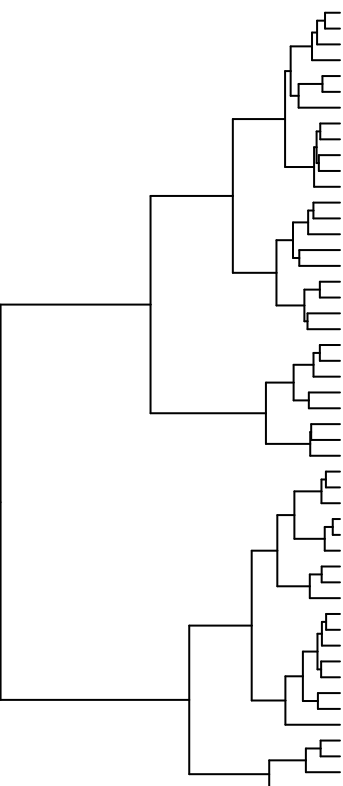
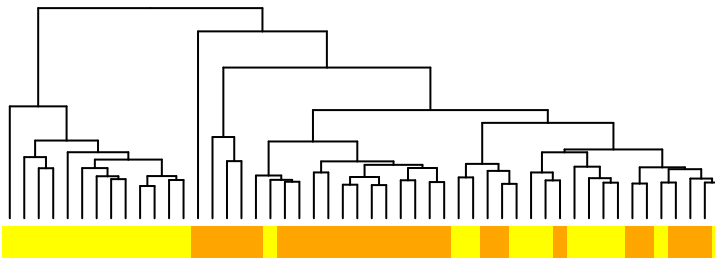
t0_vs_pod_lowCRP 985 DGEs, 537 upregulated, 448 downregulated



Color Key and Histogram



Top 50 genes



- ENSG00000069702.11 TGFB β 3
- ENSG00000148019.13 CEP78
- ENSG00000159618.16 ADGRG5
- ENSG00000155366.16 RHOC
- ENSG00000211829.9 TRDC
- ENSG00000100427.15 MLC1
- ENSG00000129757.13 CDKN1C
- ENSG00000138413.13 IDH1
- ENSG00000183019.7 MCEMP1
- ENSG00000136689.18 IL1RN
- ENSG00000168615.12 ADAM9
- ENSG00000150337.13 FCGR1A
- ENSG0000014257.16 ACPP
- ENSG00000110013.13 SIAE
- ENSG00000169385.3 RNASE2
- ENSG00000198019.13 FCGR1B
- ENSG00000108950.12 FAM20A
- ENSG00000100027.16 YPEL1
- ENSG00000116667.14 C1orf21
- ENSG00000107954.10 NEURL1
- ENSG00000189430.13 NCR1
- ENSG00000158292.7 GPR153
- ENSG00000156453.13 PCDH1
- ENSG00000124507.11 PACSIN1
- ENSG00000165490.13 DDIAS
- ENSG00000265531.3 FCGR1CP
- ENSG00000132170.21 PPAR γ
- ENSG00000156564.9 LRFN2
- ENSG00000261655.1 AC100803.3
- ENSG00000137441.8 FGFBP2
- ENSG00000180739.14 S1PR5
- ENSG00000073861.3 TBX21
- ENSG00000136026.14 CKAP4
- ENSG00000109743.11 BST1
- ENSG00000113368.12 LMNB1
- ENSG00000164125.15 GASK1B
- ENSG00000198833.7 UBE2J1
- ENSG00000163221.9 S100A12
- ENSG00000171314.9 PGAM1
- ENSG00000198053.11 SIRPA
- ENSG00000171051.8 FFR1
- ENSG00000135218.19 CD36
- ENSG00000121316.11 PLBD1
- ENSG00000135636.14 DYSF
- ENSG00000197006.14 METTL9
- ENSG00000205336.12 ADGRG1
- ENSG0000020833.18 RILNAX3
- ENSG00000203747.11 FCGR3A
- ENSG00000180644.8 PRF1
- ENSG00000143546.10 S100A8

- RG046-T0
- RG047-T0
- RG048-T0
- RG049-T0
- RG050-T0
- RG051-T0
- RG052-T0
- RG053-T0
- RG054-T0
- RG055-T0
- RG056-T0
- RG057-T0
- RG058-T0
- RG059-T0
- RG060-T0
- RG061-T0
- RG062-T0
- RG063-T0
- RG064-T0
- RG065-T0
- RG066-T0
- RG067-T0
- RG068-T0
- RG069-T0
- RG070-T0
- RG071-T0
- RG072-T0
- RG073-T0
- RG074-T0
- RG075-T0
- RG076-T0
- RG077-T0
- RG078-T0
- RG079-T0
- RG080-T0
- RG081-T0
- RG082-T0
- RG083-T0
- RG084-T0
- RG085-T0
- RG086-T0
- RG087-T0
- RG088-T0
- RG089-T0
- RG090-T0
- RG091-T0
- RG092-T0
- RG093-T0
- RG094-T0
- RG095-T0
- RG096-T0
- RG097-T0
- RG098-T0
- RG099-T0
- RG100-T0