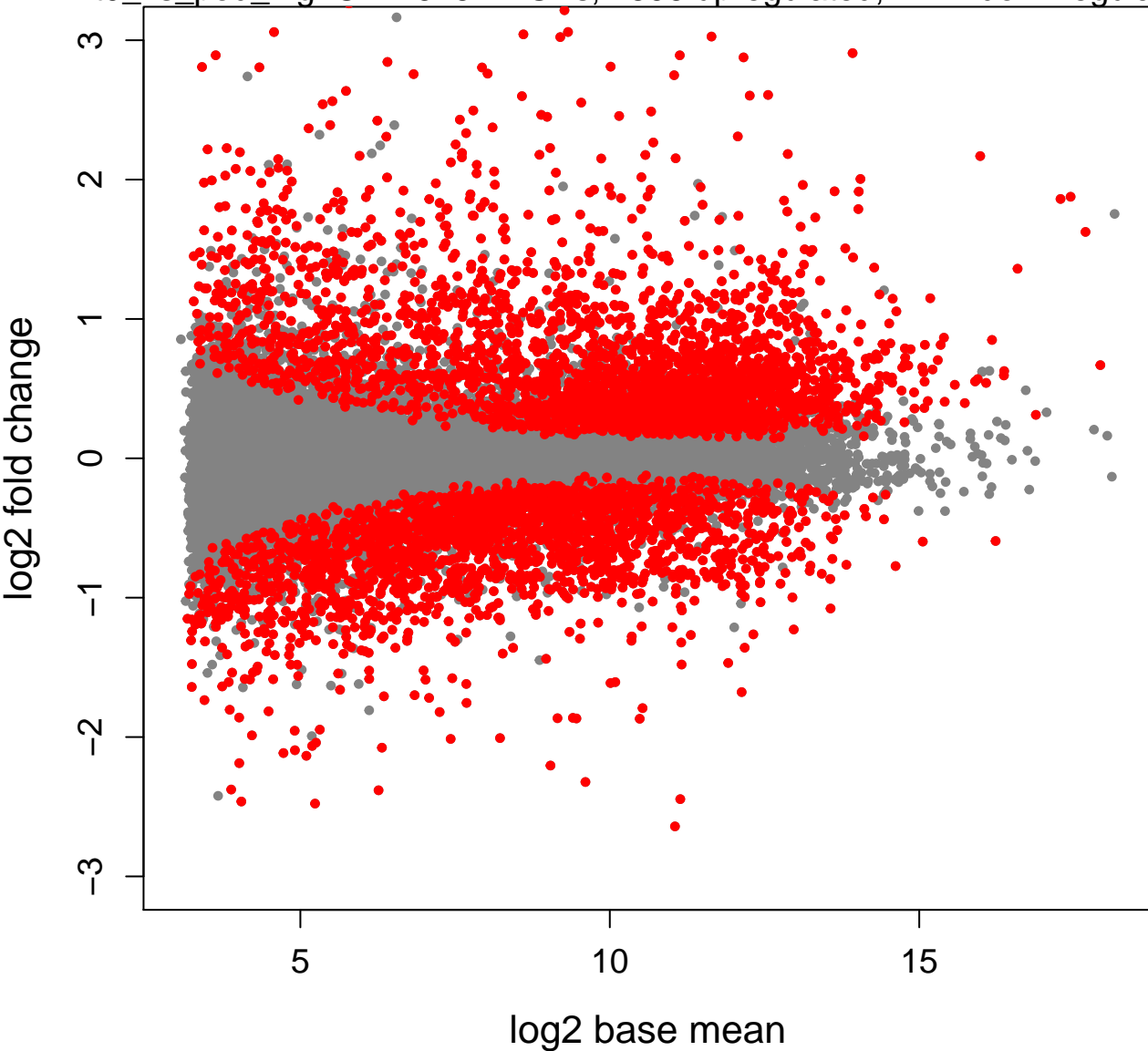
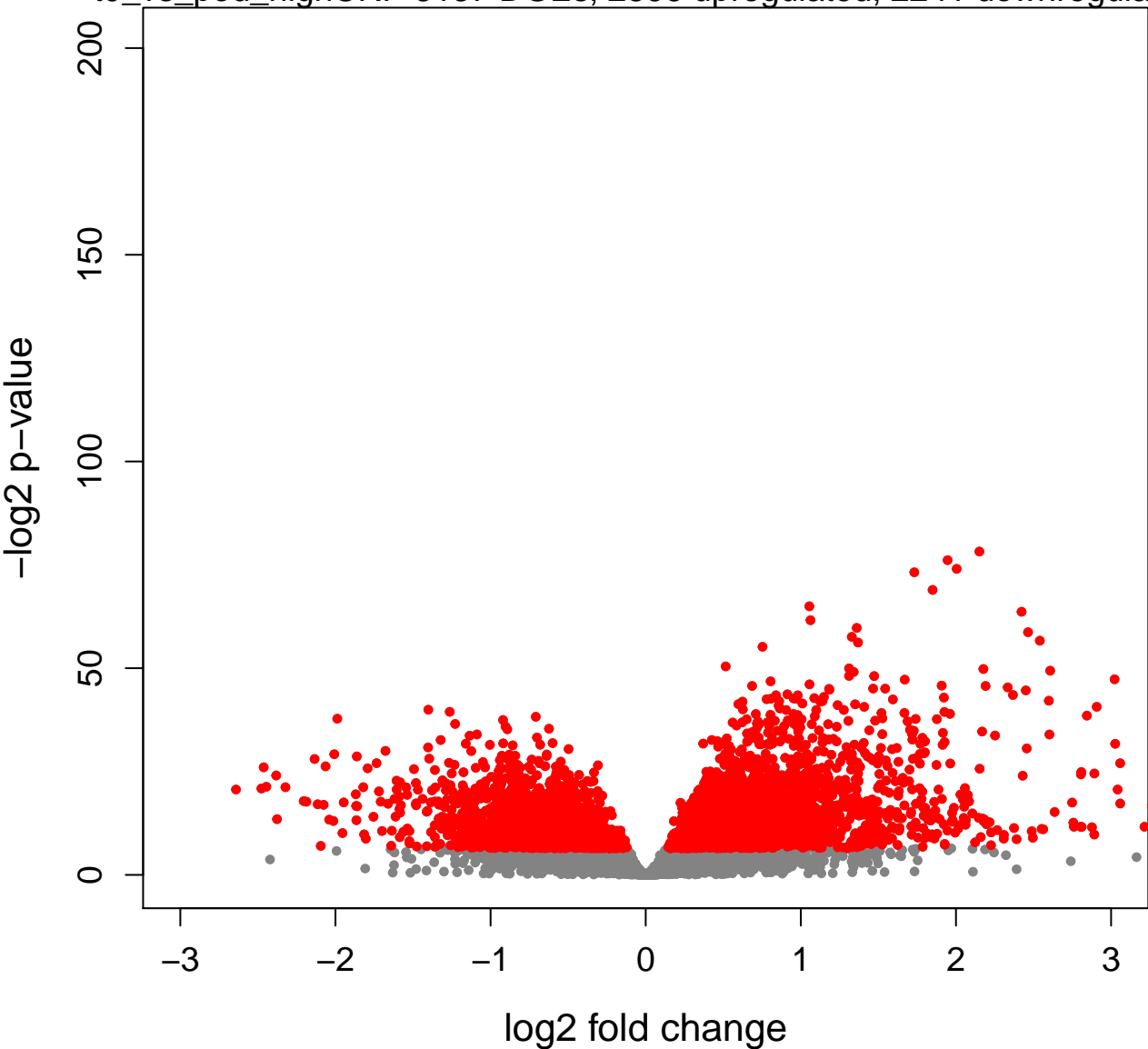


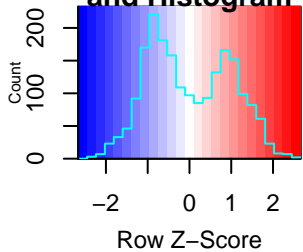
t0_vs_pod_highCRP 5137 DGEs, 2896 upregulated, 2241 downregulated



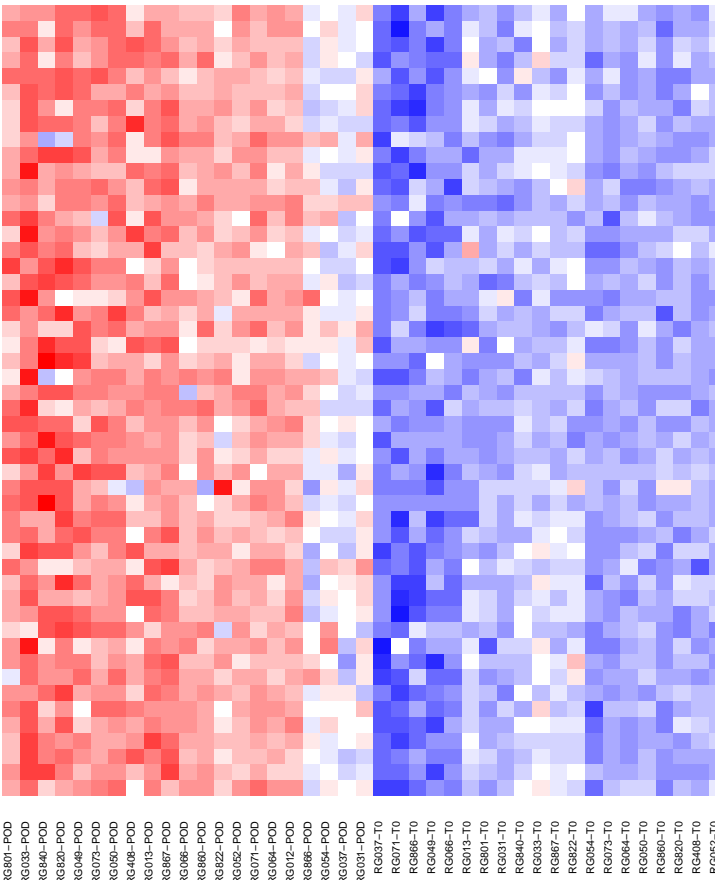
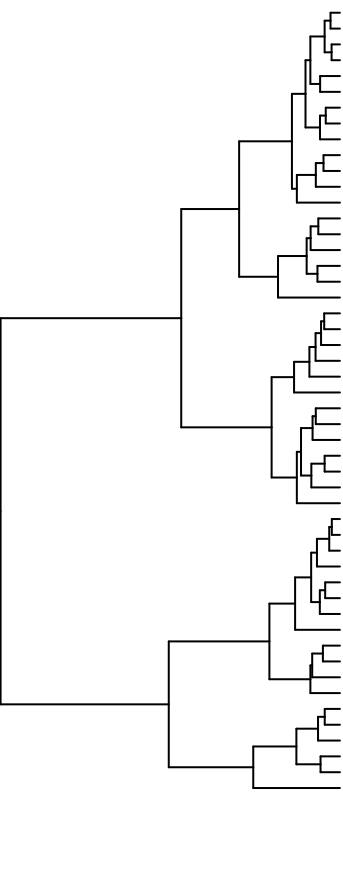
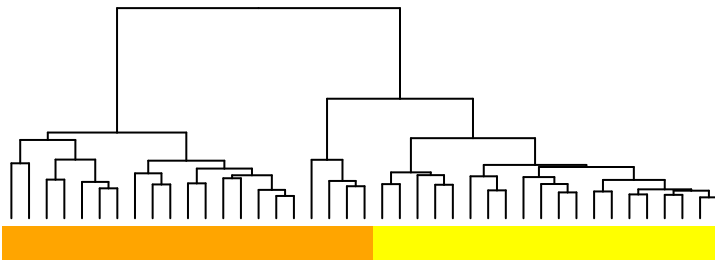
t0_vs_pod_highCRP 5137 DGEs, 2896 upregulated, 2241 downregulated



Color Key and Histogram



Top 50 genes



- ENSG00000119686.10 FLVCR2
- ENSG00000014257.16 ACPF
- ENSG00000148288.13 GBGT1
- ENSG00000114853.14 ZBTB47
- ENSG00000110079.18 MS4A4A
- ENSG00000156414.19 TDRD9
- ENSG00000008394.13 MGST1
- ENSG00000165886.5 UBTD1
- ENSG00000110002.16 VWA5A
- ENSG00000168615.12 ADAM9
- ENSG00000186205.13 MARC1
- ENSG00000169385.3 RNASE2
- ENSG00000108950.12 FAM20A
- ENSG00000135862.6 LAMC1
- ENSG00000286231.1 AL445423.3
- ENSG00000164850.15 GPER1
- ENSG00000174705.13 SH3PXD2B
- ENSG00000135424.17 ITGA7
- ENSG00000087116.16 ADAMTS2
- ENSG00000163251.4 FZD5
- ENSG00000112290.13 WASF1
- ENSG00000131187.9 F12
- ENSG00000276644.5 DACH1
- ENSG00000170439.7 METTL7B
- ENSG00000178342.4 KNG2
- ENSG00000136160.17 EDNRB
- ENSG00000132170.21 PPARG
- ENSG00000157064.11 NMNAT2
- ENSG00000168306.13 ACOX2
- ENSG00000248791.1 AC010627.1
- ENSG00000137869.15 CYP19A1
- ENSG00000111817.18 DSE
- ENSG00000138413.13 IDH1
- ENSG00000137177.20 KIF13A
- ENSG00000161944.16 ASGR2
- ENSG00000146592.17 CREB5
- ENSG00000135838.13 NPL
- ENSG00000174695.10 TMEM167A
- ENSG00000184557.4 SOCS3
- ENSG00000175727.14 MLXIP
- ENSG00000110880.10 CORO1C
- ENSG00000064601.18 CTSA
- ENSG00000138061.12 CYP11B1
- ENSG00000010327.10 STAB1
- ENSG00000125810.10 CD93
- ENSG00000121316.11 PLBD1
- ENSG00000117984.14 CTSD
- ENSG00000164733.21 CTSD
- ENSG00000038427.16 VCAN

- RG801-POD
- RG033-POD
- RG840-POD
- RG820-POD
- RG048-POD
- RG073-POD
- RG050-POD
- RG038-POD
- RG013-POD
- RG867-POD
- RG068-POD
- RG890-POD
- RG822-POD
- RG052-POD
- RG071-POD
- RG084-POD
- RG012-POD
- RG866-POD
- RG064-POD
- RG037-POD
- RG031-POD
- RG037-T0
- RG071-T0
- RG886-T0
- RG049-T0
- RG086-T0
- RG013-T0
- RG801-T0
- RG081-T0
- RG840-T0
- RG083-T0
- RG867-T0
- RG822-T0
- RG064-T0
- RG073-T0
- RG064-T0
- RG050-T0
- RG880-T0
- RG820-T0
- RG469-T0
- RG052-T0