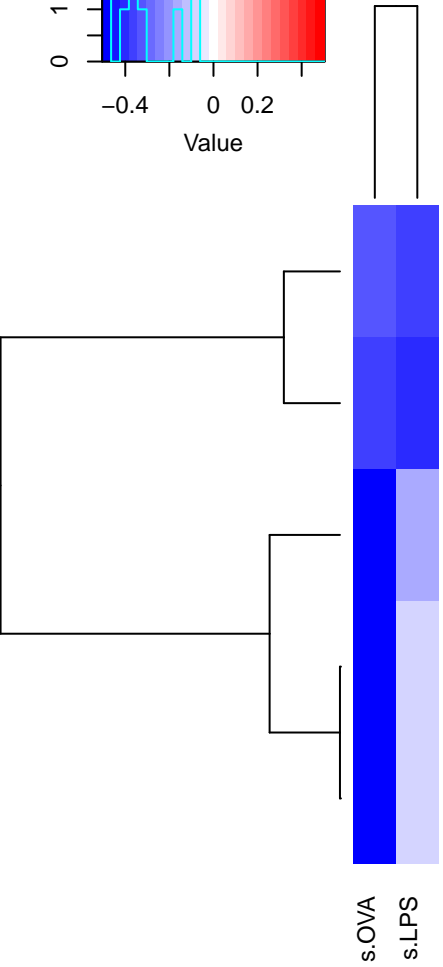
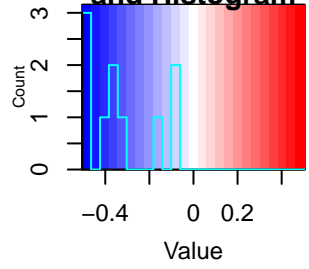


# Color Key and Histogram

# ays in hypothalamus



CREB1 PHOSPHORYLATION THROUGH THE ACTIVATION OF ADENYLATE CYCLASE

VOLTAGE GATED POTASSIUM CHANNELS

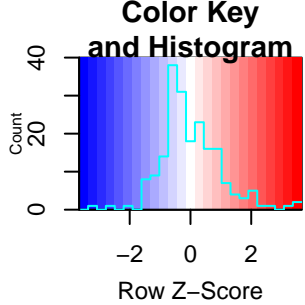
SEROTONIN NEUROTRANSMITTER RELEASE CYCLE

HIGHLY CALCIUM PERMEABLE POSTSYNAPTIC NICOTINIC ACETYLCHOLINE RECEPTORS

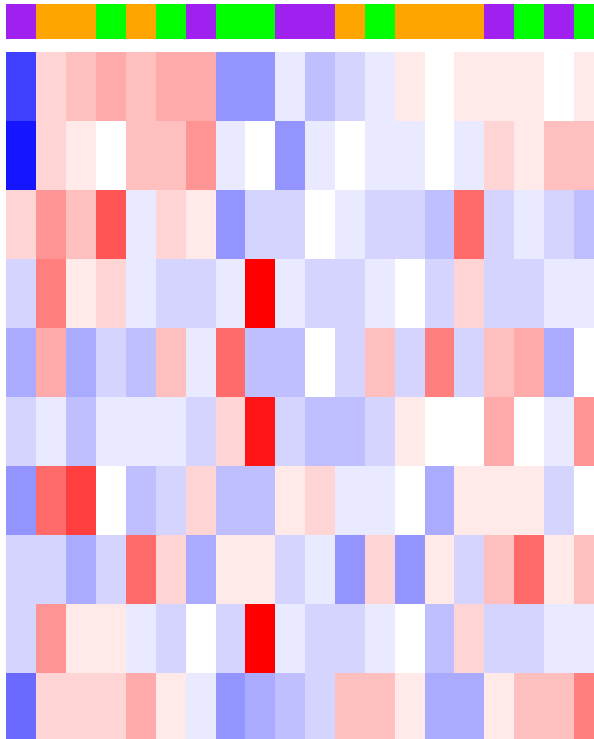
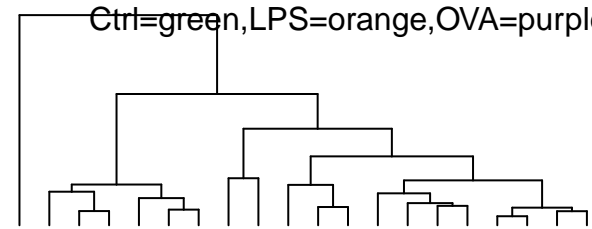
ACETYLCHOLINE BINDING AND DOWNSTREAM EVENTS

s.OVA  
s.LPS

# LE POSTSYNAPTIC NICOTINIC ACETYLCHOLINE RECEPTOR



Ctrl=green, LPS=orange, OVA=purple



ENSMUSG00000027950.8 Chrnb2

ENSMUSG00000027577.15 Chrna4

ENSMUSG00000032303.9 Chrna3

ENSMUSG00000031491.11 Chrna6

ENSMUSG00000027107.4 Chrna1

ENSMUSG00000035594.11 Chrna5

ENSMUSG00000035200.8 Chrnb4

ENSMUSG00000022041.11 Chrna2

ENSMUSG00000031492.14 Chrnb3

ENSMUSG00000030525.9 Chrna7

EA9.1

EA25.1

EA29.1

EA14.1

EA31.1

EA13.1

EA35.1

EA5.1

EA6.1

EA4.1

EA12.1

EA24.1

EA20.1

EA28.1

EA26.1

EA30.1

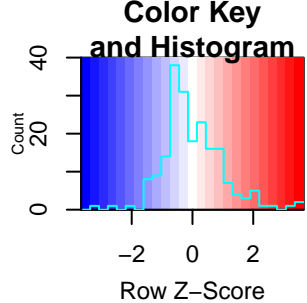
EA34.1

EA19.1

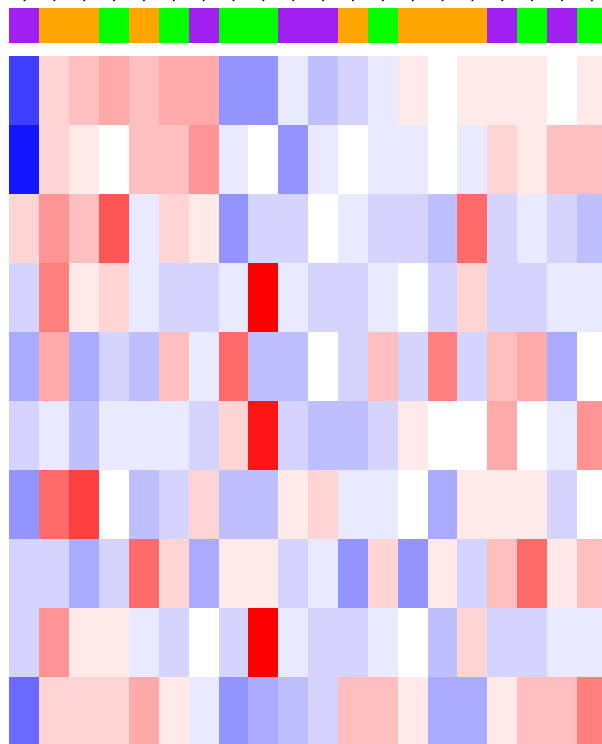
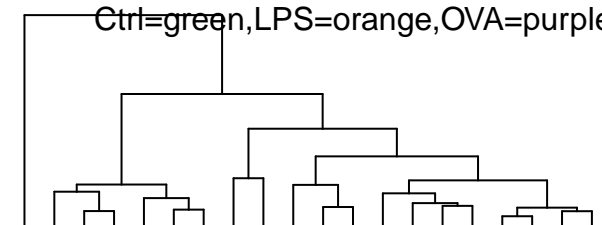
EA11.1

EA7.1

# OLIGONE BINDING AND DOWNSTREAM EVENTS



Ctrl=green, LPS=orange, OVA=purple



ENSMUSG00000027950.8 Chrnb2

ENSMUSG00000027577.15 Chrna4

ENSMUSG00000032303.9 Chrna3

ENSMUSG00000031491.11 Chrna6

ENSMUSG00000027107.4 Chrna1

ENSMUSG00000035594.11 Chrna5

ENSMUSG00000035200.8 Chrnb4

ENSMUSG00000022041.11 Chrna2

ENSMUSG00000031492.14 Chrnb3

ENSMUSG00000030525.9 Chrna7

EA9.1

EA25.1

EA29.1

EA14.1

EA31.1

EA13.1

EA35.1

EA5.1

EA6.1

EA4.1

EA12.1

EA24.1

EA20.1

EA28.1

EA26.1

EA30.1

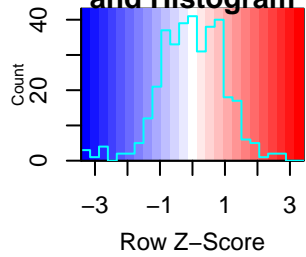
EA34.1

EA19.1

EA11.1

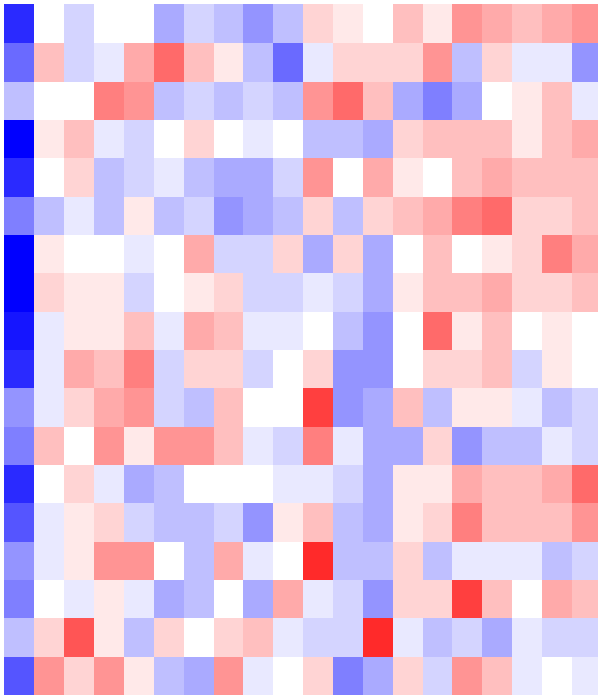
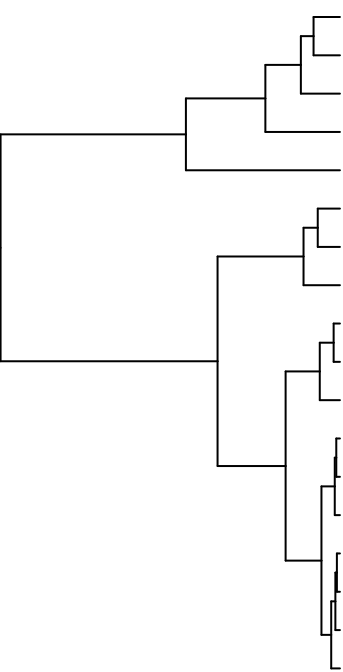
EA7.1

# Color Key and Histogram



# IN NEUROTRANSMITTER RELEASE CYCLE

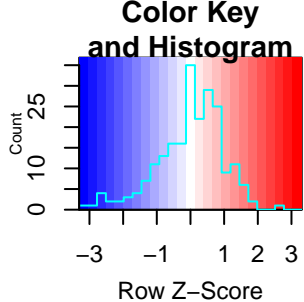
Ctrl=green, LPS=orange, OVA=purple



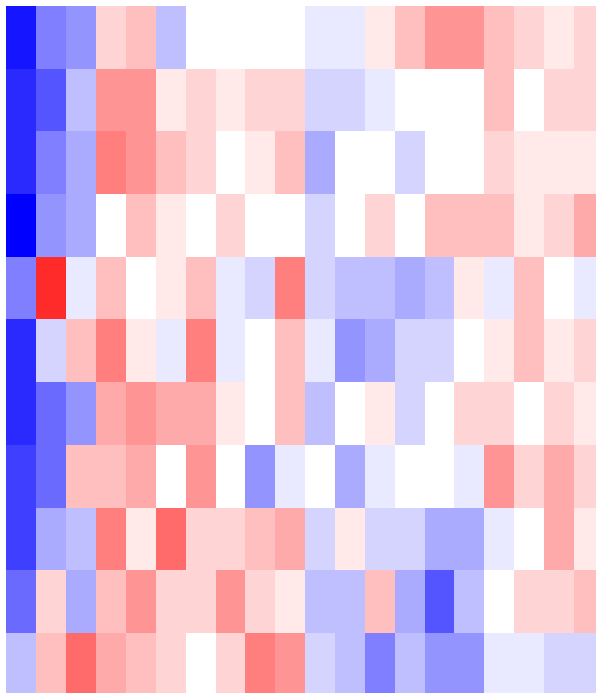
- ENSMUSG00000035864.15 Syt1
- ENSMUSG00000031840.15 Rab3a
- ENSMUSG00000020894.17 Vamp2
- ENSMUSG00000026797.17 Stxbp1
- ENSMUSG00000027273.14 Snap25
- ENSMUSG00000033615.10 Cplx1
- ENSMUSG00000009394.14 Syn2
- ENSMUSG00000037217.16 Syn1
- ENSMUSG00000003863.19 Ppfia3
- ENSMUSG00000026458.14 Ppfia4
- ENSMUSG00000034156.17 Tspoap1
- ENSMUSG00000007207.11 Stx1a
- ENSMUSG00000053825.16 Ppfia2
- ENSMUSG00000041670.20 Rims1
- ENSMUSG00000028456.19 Unc13b
- ENSMUSG00000059602.15 Syn3
- ENSMUSG00000025094.9 Slc18a2
- ENSMUSG00000037519.18 Ppfia1

- EA9.1
- EA14.1
- EA25.1
- EA35.1
- EA26.1
- EA30.1
- EA29.1
- EA28.1
- EA4.1
- EA24.1
- EA5.1
- EA12.1
- EA6.1
- EA20.1
- EA31.1
- EA19.1
- EA34.1
- EA11.1
- EA13.1
- EA7.1

# ON THROUGH THE ACTIVATION OF ADENYLATE CYCL



Ctrl=green, LPS=orange, OVA=purple



ENSMUSG00000025855.14 Prkar1b

ENSMUSG00000020612.17 Prkar1a

ENSMUSG00000005034.16 Prkacb

ENSMUSG00000005469.11 Prkaca

ENSMUSG00000020431.6 Adcy1

ENSMUSG00000002997.16 Prkar2b

ENSMUSG000000032601.14 Prkar2a

ENSMUSG000000022376.9 Adcy8

ENSMUSG000000025958.15 Creb1

ENSMUSG000000035725.14 Prkx

ENSMUSG00000001175.17 Calm1

EA9.1

EA5.1

EA6.1

EA7.1

EA13.1

EA24.1

EA19.1

EA35.1

EA12.1

EA11.1

EA26.1

EA4.1

EA28.1

EA30.1

EA29.1

EA31.1

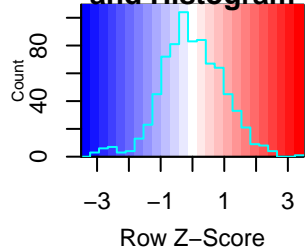
EA14.1

EA34.1

EA20.1

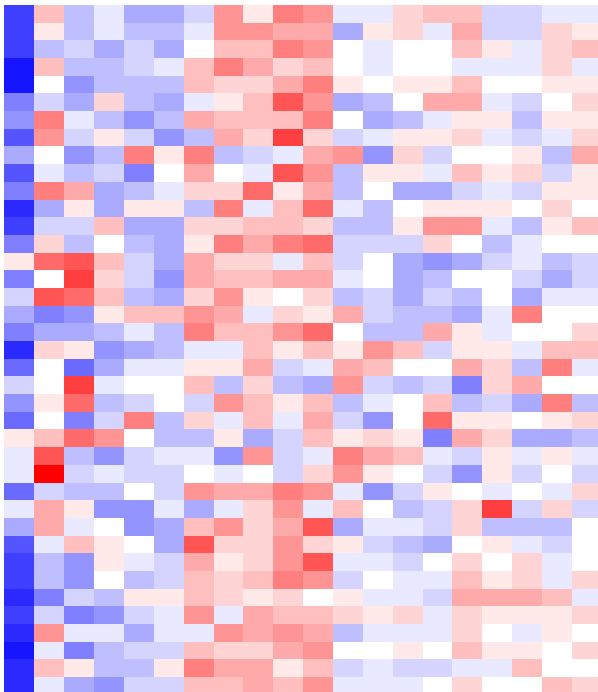
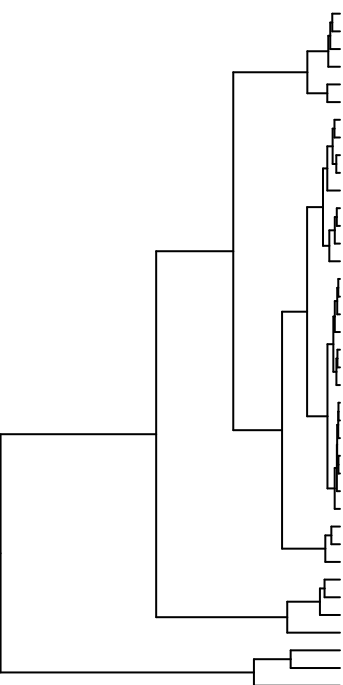
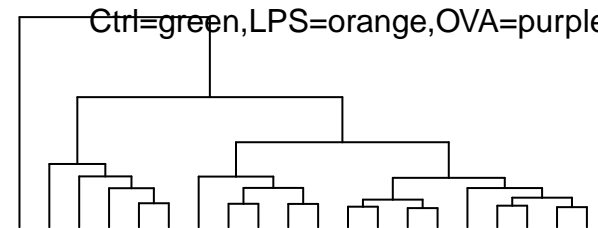
EA25.1

# Color Key and Histogram



# TAGE GATED POTASSIUM CHANNELS

Ctrl=green, LPS=orange, OVA=purple



EA9.1  
EA5.1  
EA6.1  
EA12.1  
EA4.1  
EA30.1  
EA31.1  
EA11.1  
EA34.1  
EA7.1  
EA19.1  
EA28.1  
EA26.1  
EA35.1  
EA24.1  
EA13.1  
EA14.1  
EA29.1  
EA25.1  
EA20.1

ENSMUSG00000056258.10 Kcnaq3  
ENSMUSG00000035681.8 Kcnc2  
ENSMUSG00000040896.17 Kcnd3  
ENSMUSG00000062785.15 Kcnc3  
ENSMUSG00000050556.10 Kcnc1  
ENSMUSG00000060882.6 Kcnd2  
ENSMUSG00000028033.17 Kcna5  
ENSMUSG00000059742.11 Kcnc7  
ENSMUSG00000045534.5 Kcna5  
ENSMUSG00000050963.8 Kcnc2  
ENSMUSG00000018470.9 Kcncab3  
ENSMUSG00000042604.6 Kcna4  
ENSMUSG00000092083.5 Kcnc2  
ENSMUSG00000047976.5 Kcna1  
ENSMUSG00000037579.8 Kcnc3  
ENSMUSG00000074575.5 Kcng1  
ENSMUSG00000022342.7 Kcncv1  
ENSMUSG00000043673.12 Kcnc3  
ENSMUSG00000047959.5 Kcna3  
ENSMUSG0000009731.5 Kcnc1  
ENSMUSG0000001901.16 Kcnc6  
ENSMUSG00000059852.8 Kcng2  
ENSMUSG00000045246.12 Kcng4  
ENSMUSG00000035580.11 Kcnc8  
ENSMUSG00000040164.4 Kcnc1  
ENSMUSG00000028631.8 Kcnc4  
ENSMUSG00000035355.16 Kcnc4  
ENSMUSG00000034402.4 Kcnc5  
ENSMUSG00000090954.15 Kcncq1  
ENSMUSG00000027827.18 Kcncab1  
ENSMUSG00000051726.7 Kcncf1  
ENSMUSG00000058248.13 Kcnc1  
ENSMUSG00000038077.8 Kcnc6  
ENSMUSG00000027895.11 Kcnc4  
ENSMUSG00000038319.15 Kcnc2  
ENSMUSG00000040724.6 Kcnc2  
ENSMUSG00000016346.18 Kcncq2  
ENSMUSG00000028931.13 Kcncab2  
ENSMUSG00000058975.8 Kcnc1