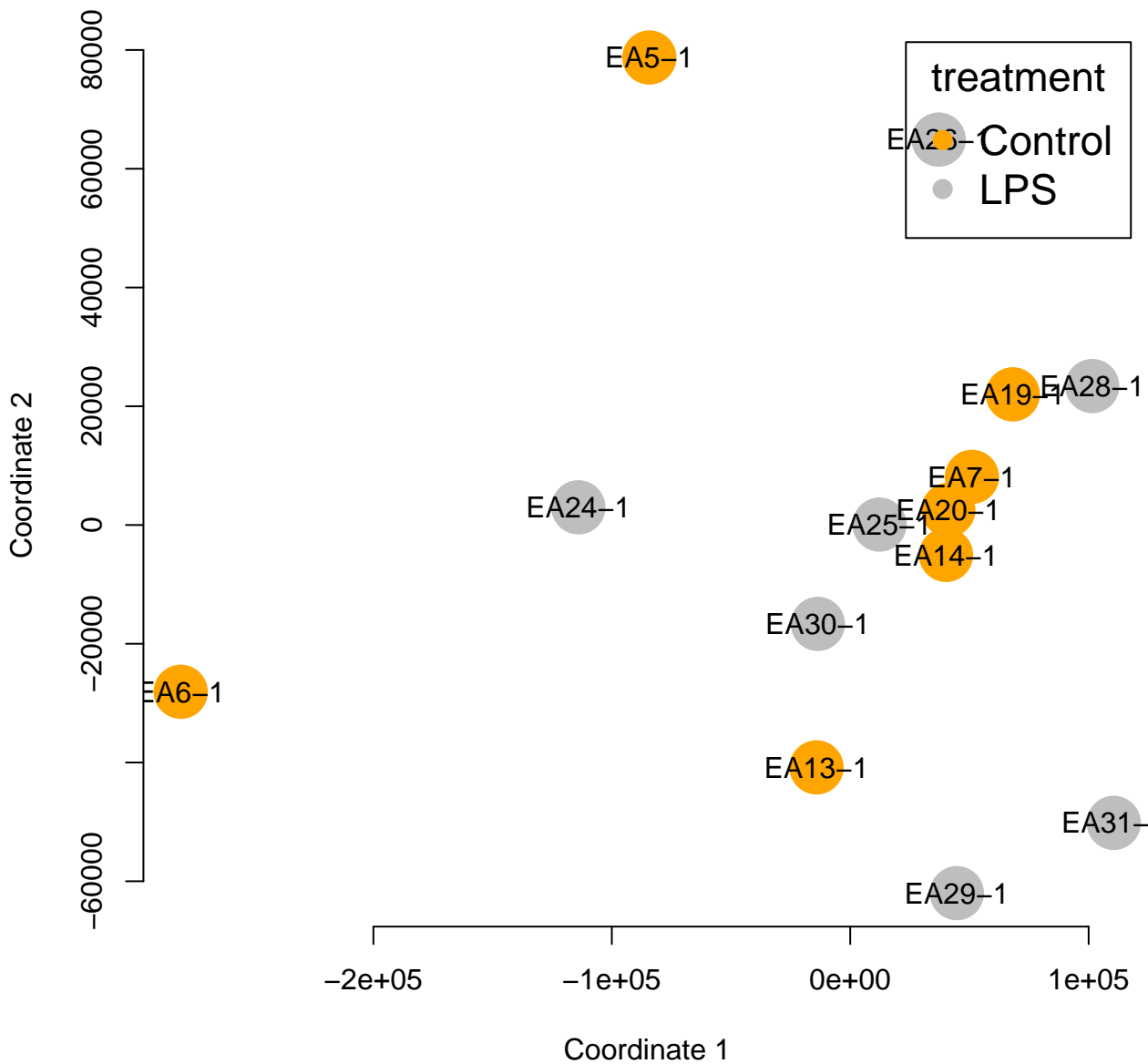
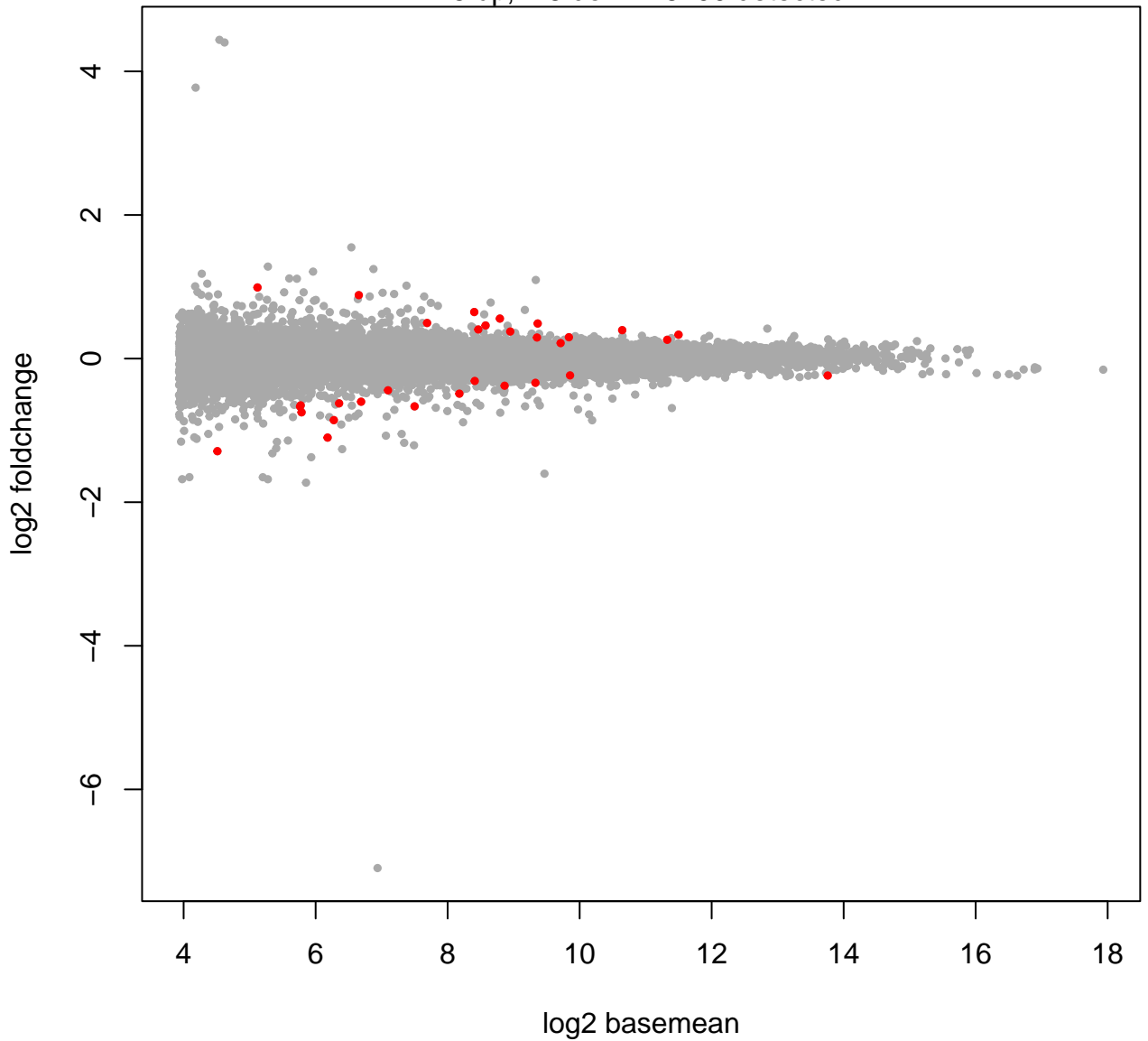


Cont1: Effect of LPS treatment in hypothalamus



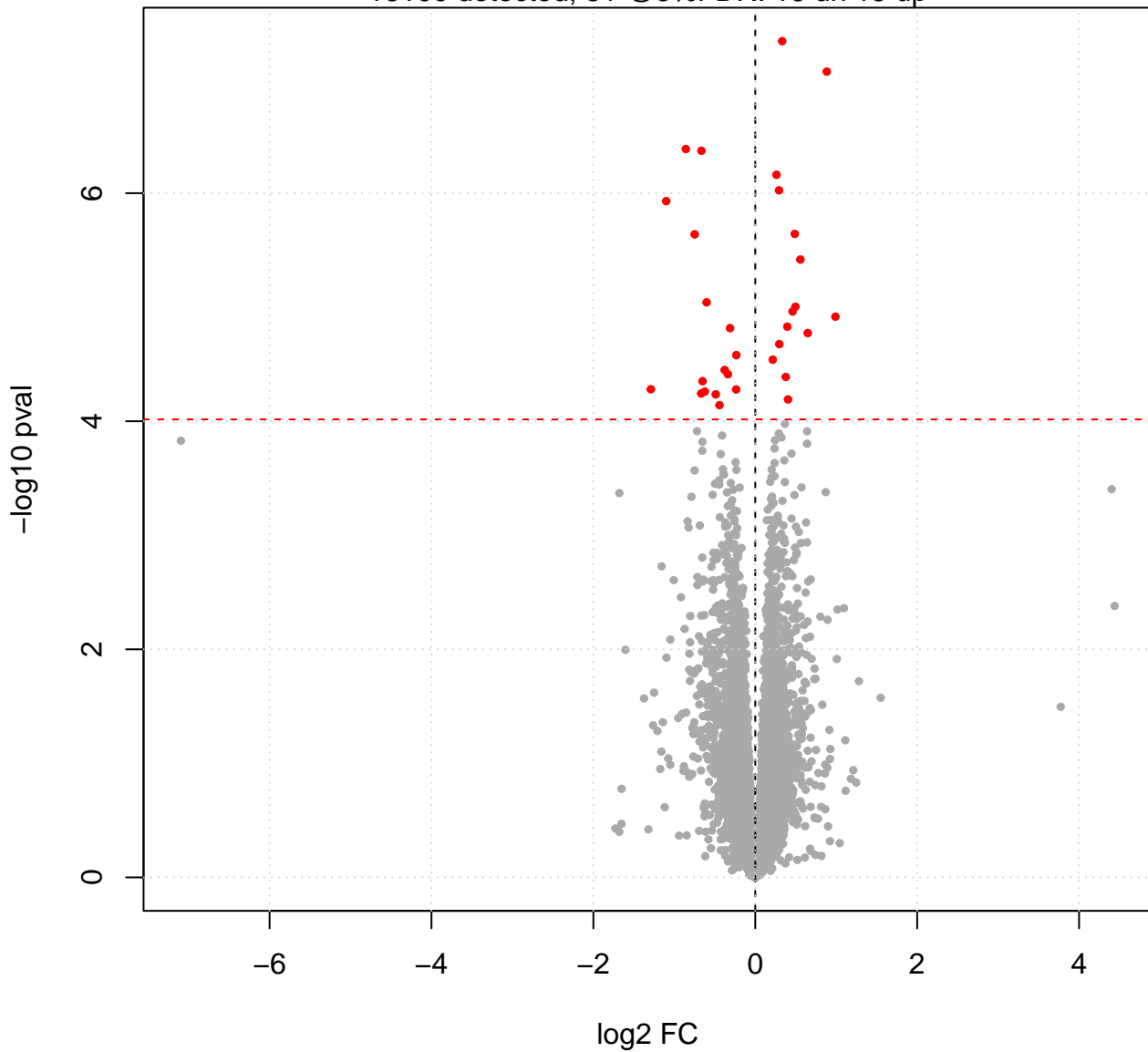
Cont1: Effect of LPS treatment in hypothalamus

15 up, 16 down 16100 detected

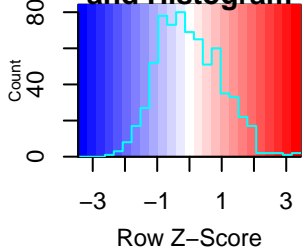


Cont1: Effect of LPS treatment in hypothalamus

16100 detected, 31 @5%FDR: 16 dn 15 up

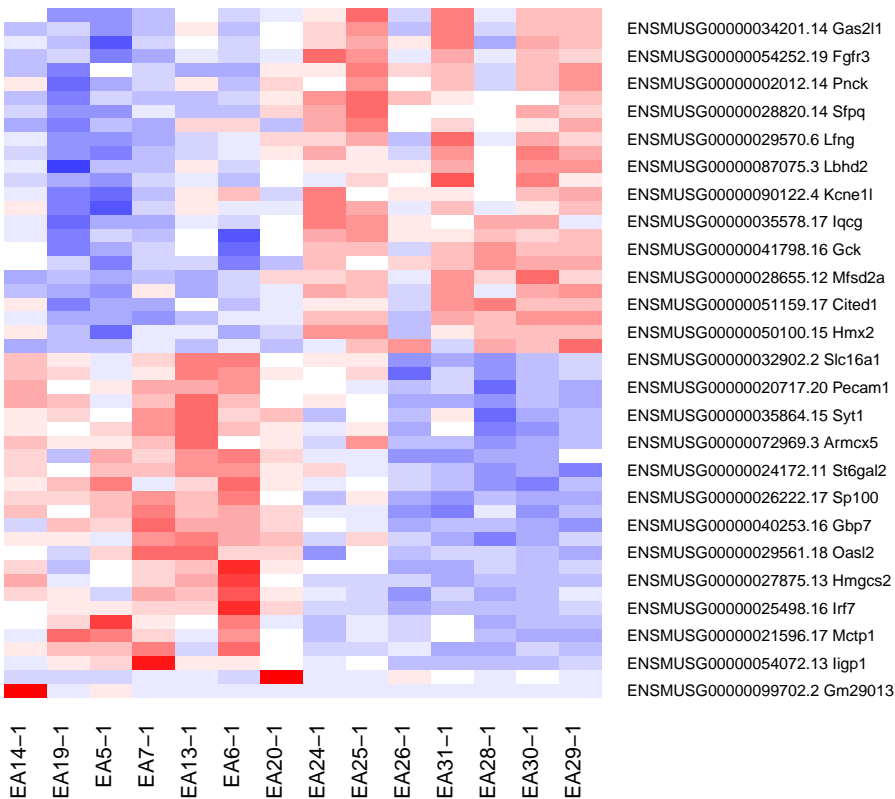
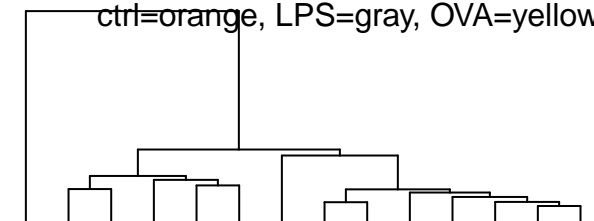


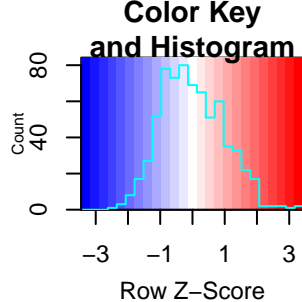
Color Key and Histogram



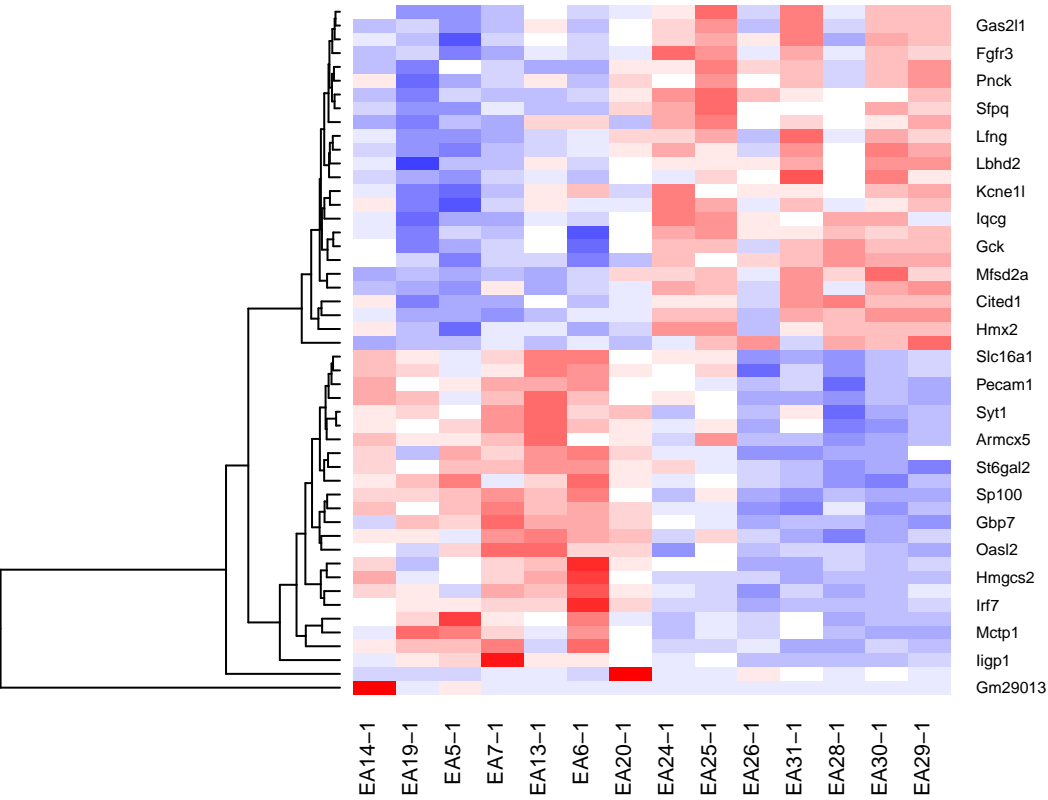
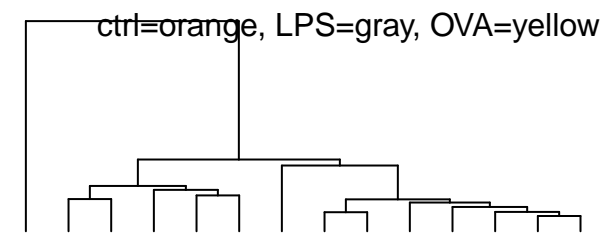
DEGs in Cont1: Effect of LPS treatment in hypothalamus

ctrl=orange, LPS=gray, OVA=yellow

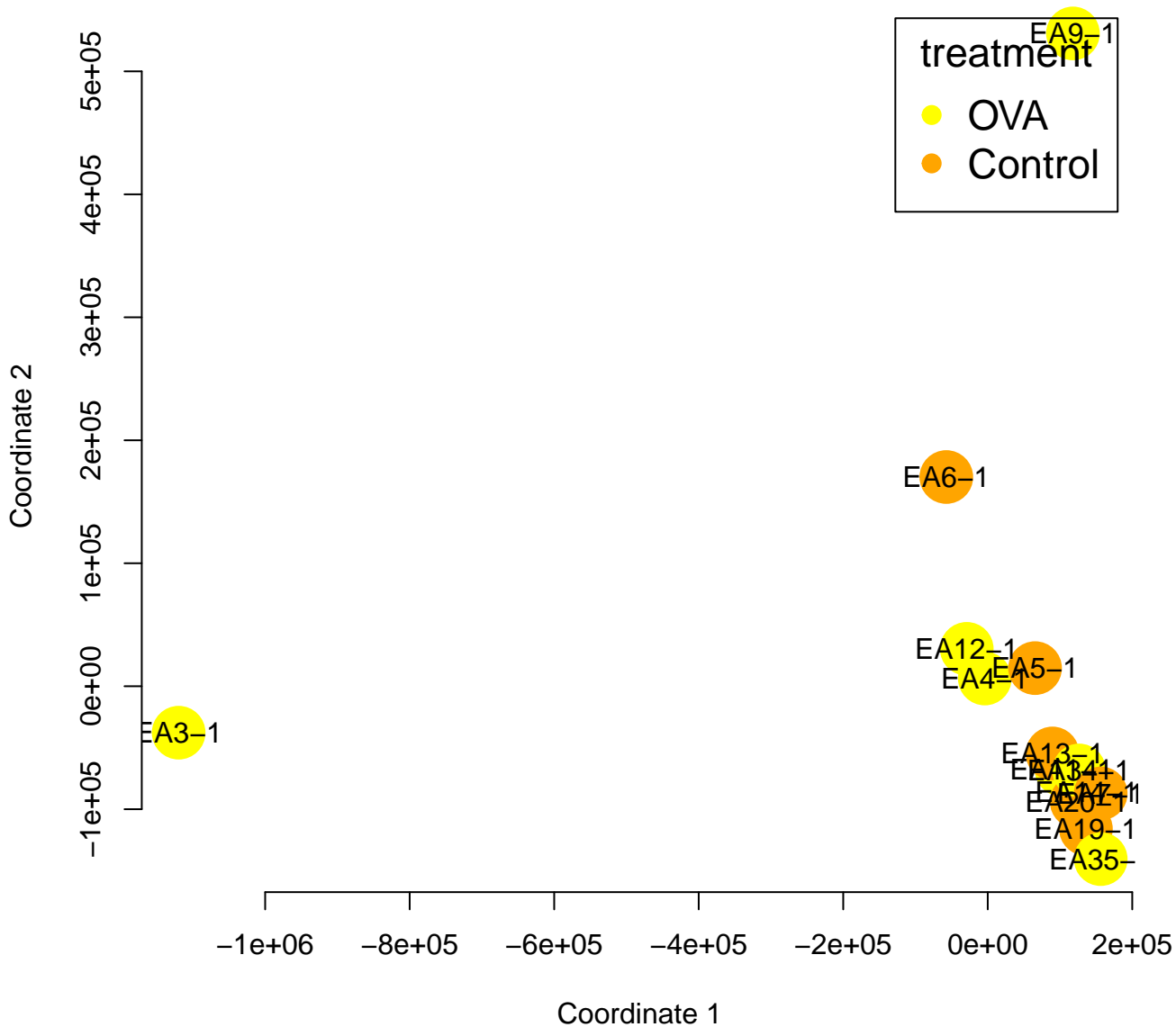




DEGs in Cont1: Effect of LPS treatment in hypothalamus

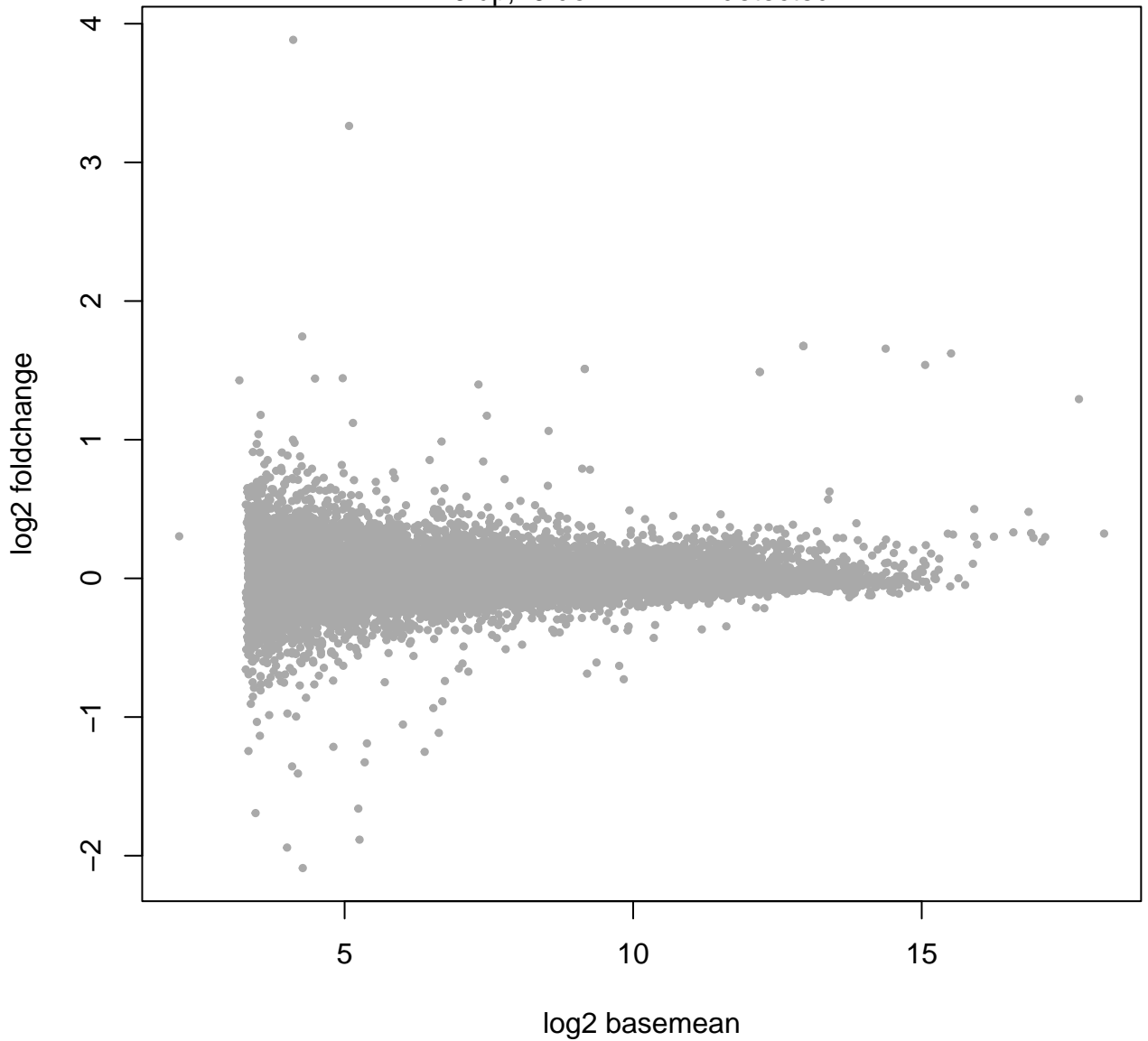


Cont1: Effect of OVA treatment in hypothalamus



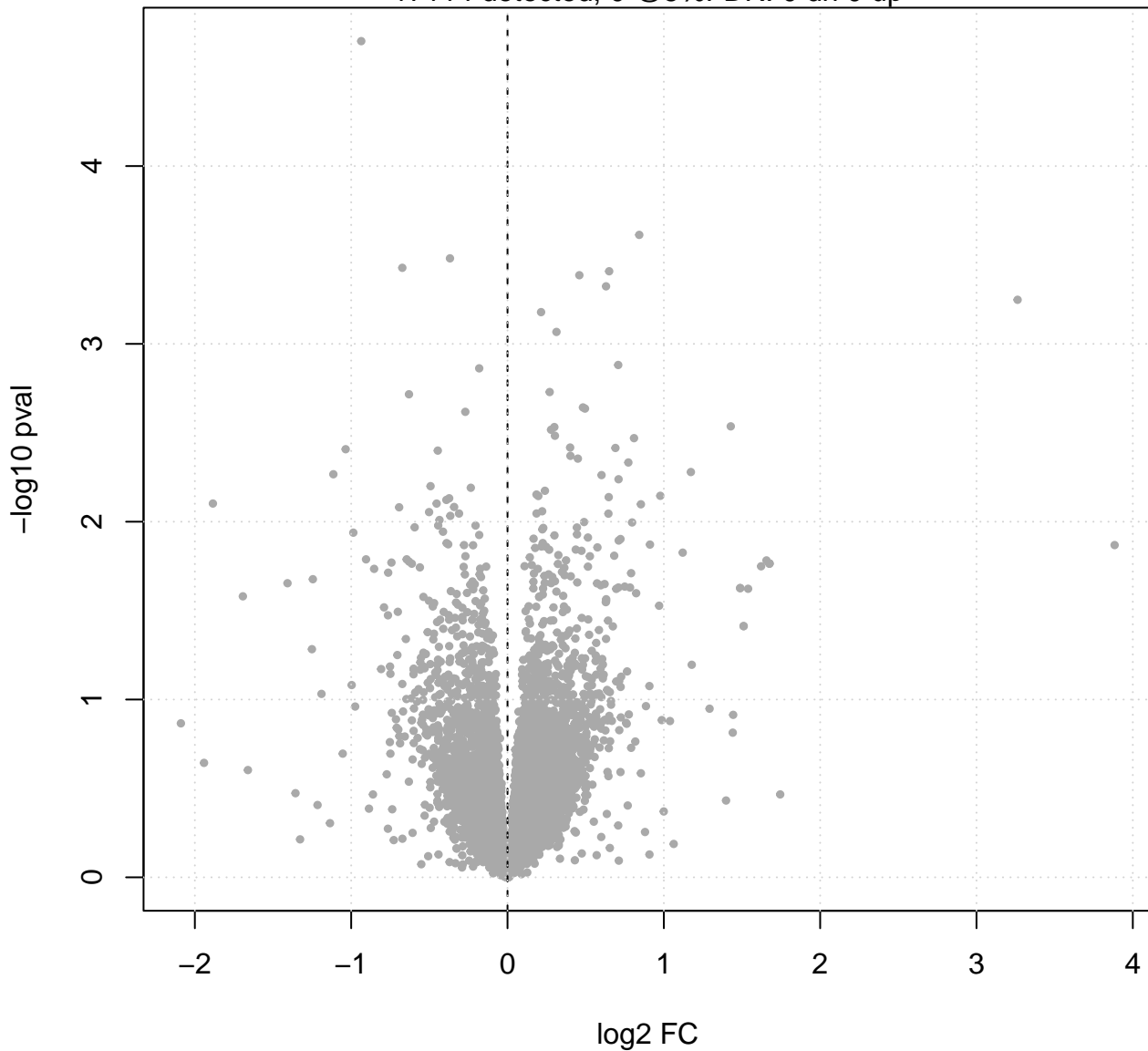
Cont1: Effect of OVA treatment in hypothalamus

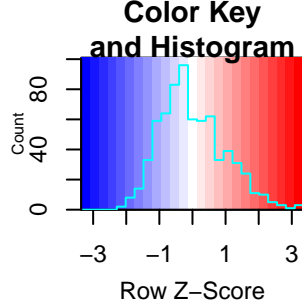
0 up, 0 down 17114 detected



Cont1: Effect of OVA treatment in hypothalamus

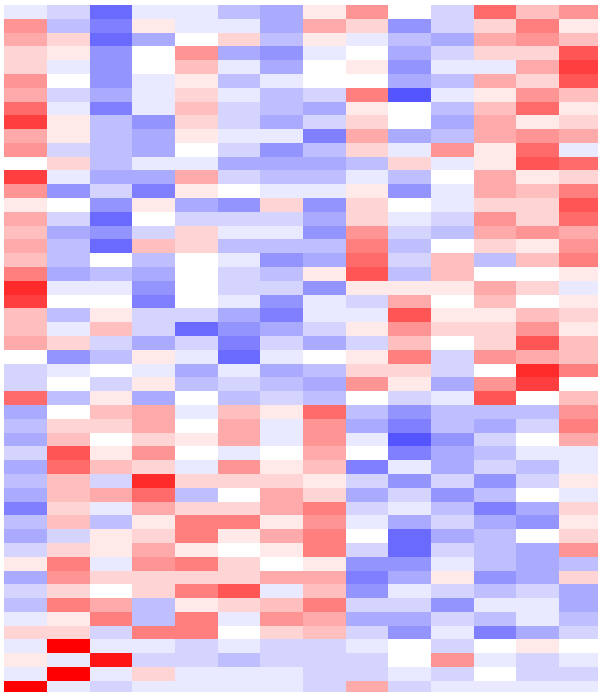
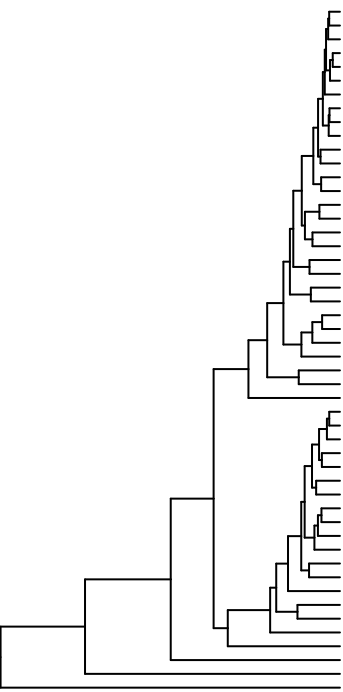
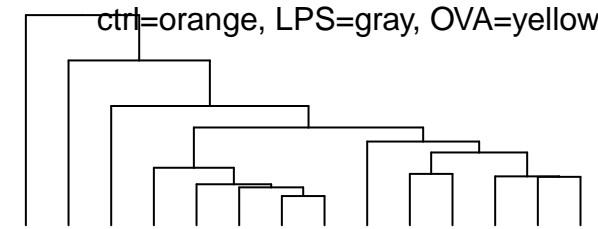
17114 detected, 0 @5%FDR: 0 dn 0 up





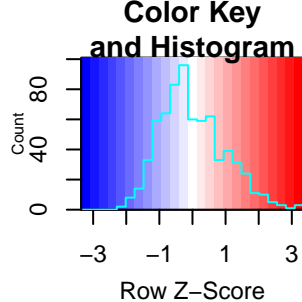
ps in Cont1: Effect of OVA treatment in hypothalamus

ctrl=orange, LPS=gray, OVA=yellow



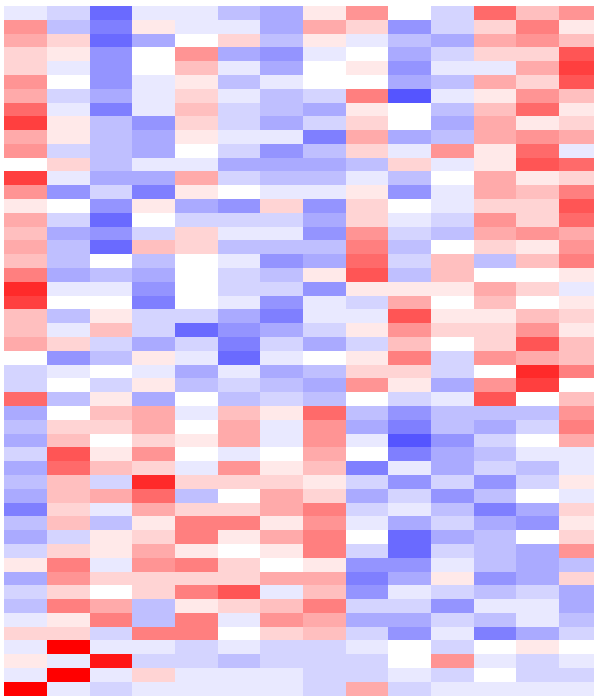
- ENSMUSG00000026600.13 *Soat1*
- ENSMUSG00000029570.6 *Lfng*
- ENSMUSG00000054252.19 *Fgfr3*
- ENSMUSG00000059970.8 *Hspa2*
- ENSMUSG00000013089.16 *Etv5*
- ENSMUSG00000000530.17 *Acvr1l*
- ENSMUSG00000025324.9 *Atp10a*
- ENSMUSG00000092483.2 *Gm20421*
- ENSMUSG00000020123.7 *Avpr1a*
- ENSMUSG00000070960.5 *Gm19680*
- ENSMUSG00000019232.15 *Etnppl*
- ENSMUSG00000087575.8 *Gm12976*
- ENSMUSG000000115003.2 *Gm48933*
- ENSMUSG00000040310.13 *Alx4*
- ENSMUSG00000066829.8 *Zfp810*
- ENSMUSG000000021892.15 *Sh3bp5*
- ENSMUSG00000026222.17 *Sp100*
- ENSMUSG00000087589.4 *D43004D24Rik*
- ENSMUSG00000044285.9 *Ubb-ps*
- ENSMUSG00000039133.9 *9330171B17Rik*
- ENSMUSG00000048070.5 *Pirt*
- ENSMUSG00000085328.3 *Gm17131*
- ENSMUSG000000108815.2 *Gm49388*
- ENSMUSG000000091318.3 *Gm5415*
- ENSMUSG00000075014.2 *Gm10800*

- EA4-1
- EA6-1
- EA5-1
- EA14-1
- EA20-1
- EA7-1
- EA19-1
- EA13-1
- EA3-1
- EA9-1
- EA35-1
- EA11-1
- EA12-1
- EA34-1



DEGs in Cont1: Effect of OVA treatment in hypothalamus

ctrl=orange, LPS=gray, OVA=yellow



Soat1
 Lfng
 Fgfr3
 Hspa2
 Etv5
 Acvr1
 Atp10a
 Gm20421
 Avpr1a
 Gm19680
 Etnpl
 Gm12976
 Gm48933
 Alx4
 Zfp810
 Sh3bp5
 Sp100
 D430040D24Rik
 Ubb-ps
 9330171B17Rik
 Pirt
 Gm17131
 Gm49388
 Gm5415
 Gm10800

EA4-1
 EA6-1
 EA5-1
 EA14-1
 EA20-1
 EA7-1
 EA19-1
 EA13-1
 EA3-1
 EA9-1
 EA35-1
 EA11-1
 EA12-1
 EA34-1