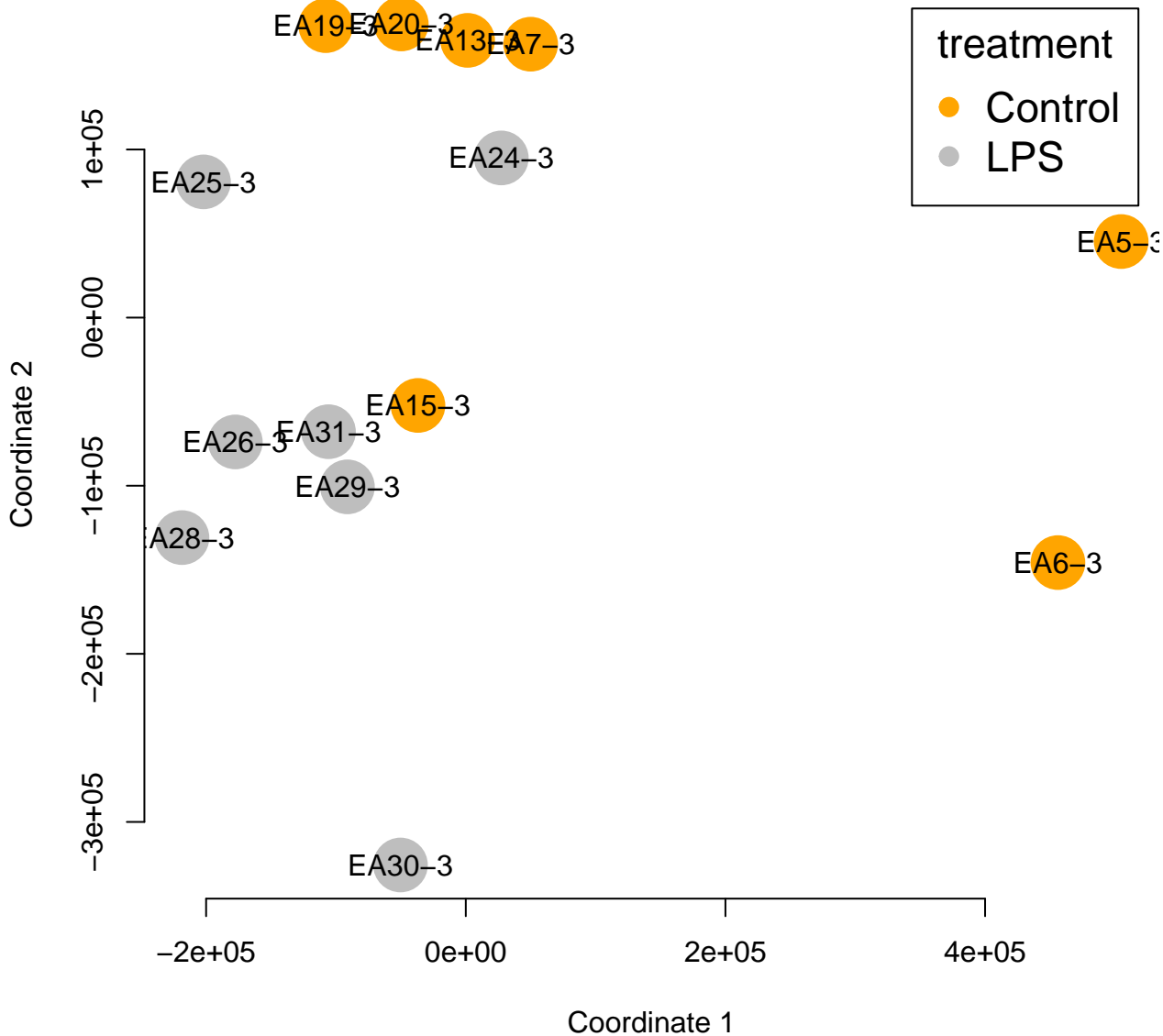
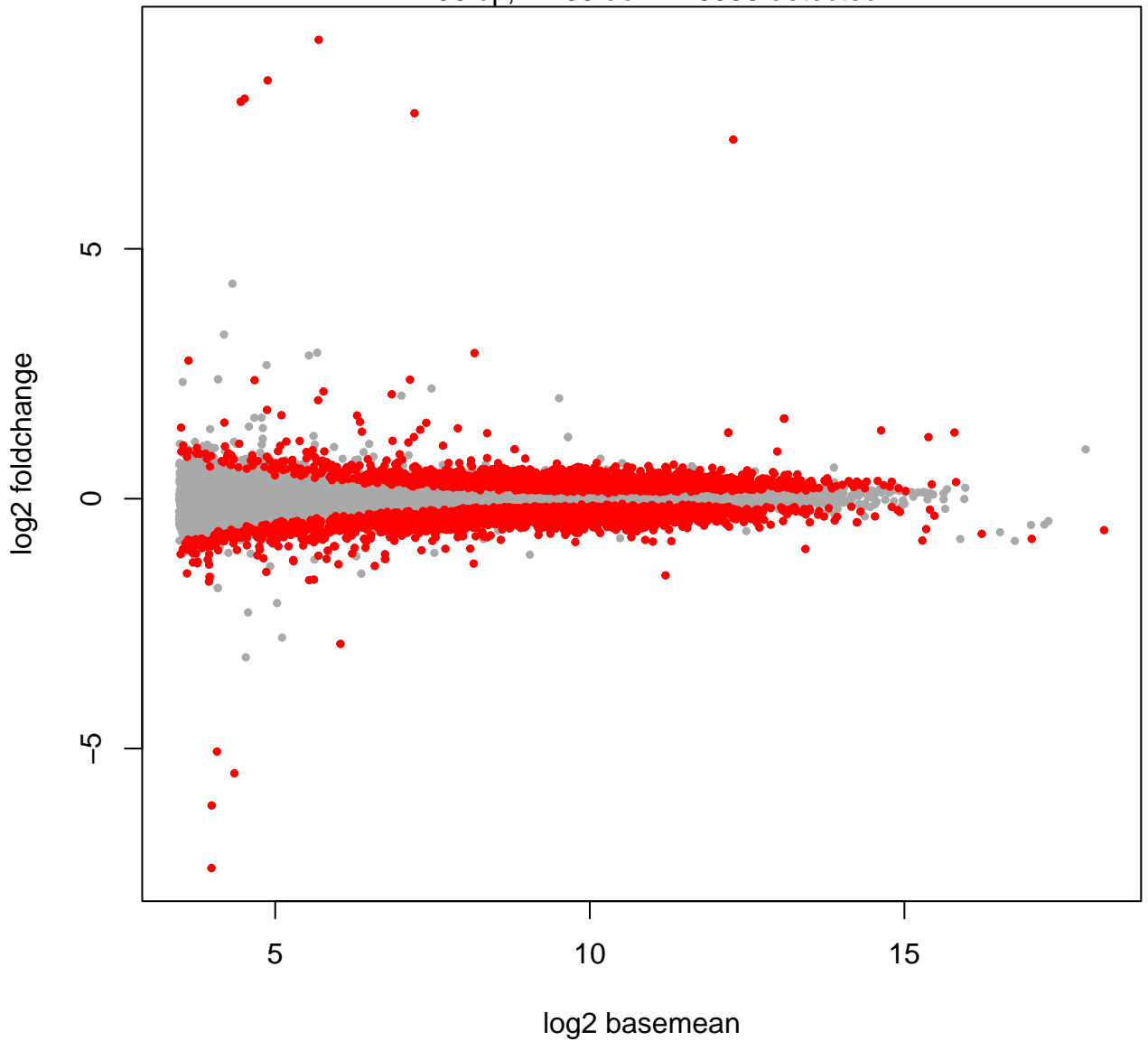


Cont3: Effect of LPS treatment in hippocampus



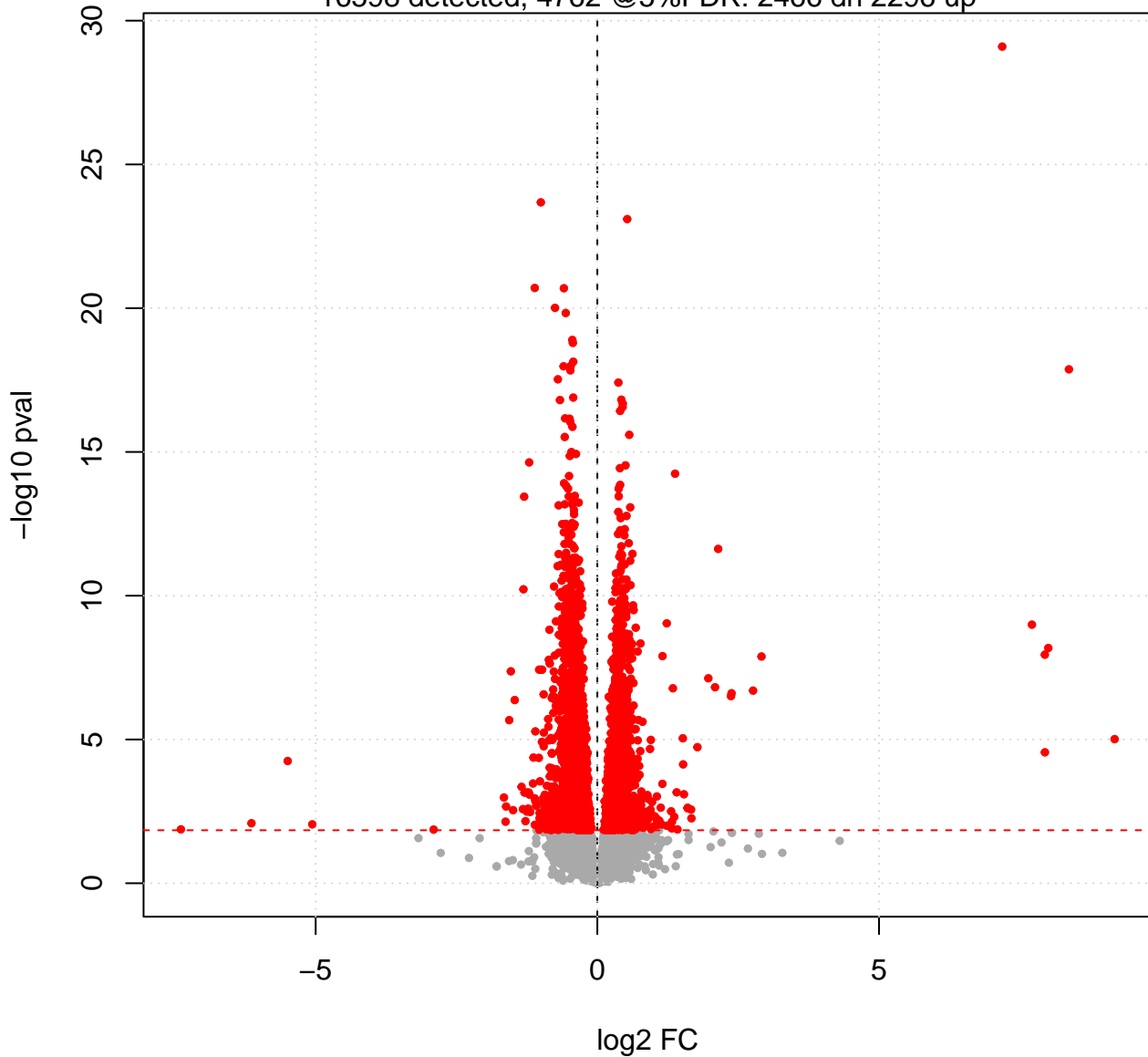
Cont3: Effect of LPS treatment in hippocampus

2296 up, 2466 down 16598 detected

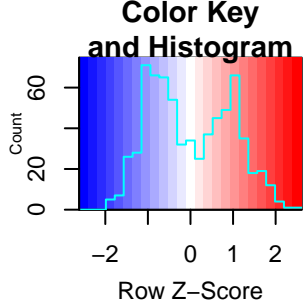


Cont3: Effect of LPS treatment in hippocampus

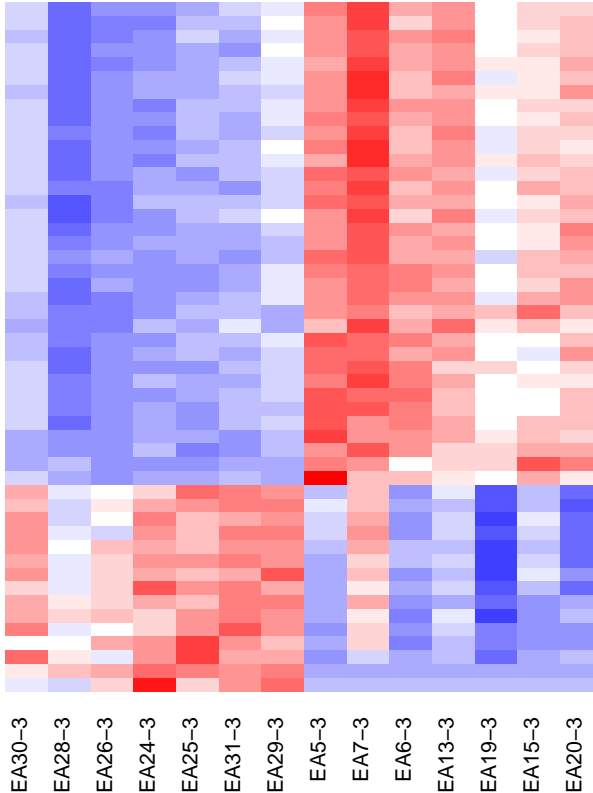
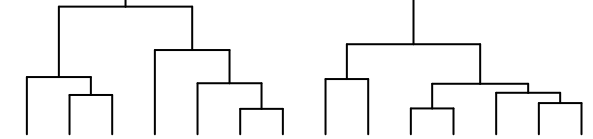
16598 detected, 4762 @5%FDR: 2466 dn 2296 up



Genes in Cont3: Effect of LPS treatment in hippocampus

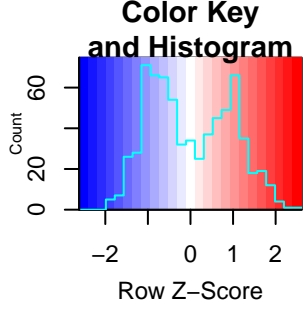


ctrl=orange, LPS=gray, OVA=yellow

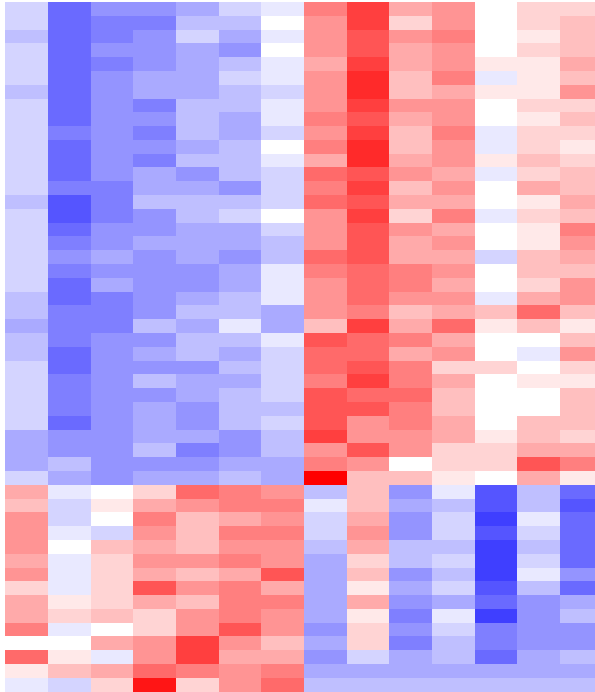
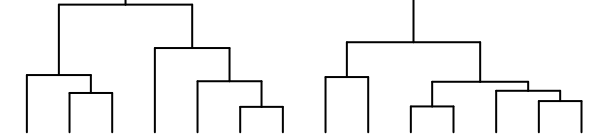


ENSMUSG00000020664.11 Dld
 ENSMUSG00000013662.7 Atad1
 ENSMUSG00000015733.14 Capza2
 ENSMUSG000000025104.14 Hdgfl3
 ENSMUSG000000047879.18 Usp14
 ENSMUSG000000037640.16 Zfp60
 ENSMUSG000000020064.10 Herc4
 ENSMUSG000000022403.16 Stt13
 ENSMUSG000000020608.8 Smc6
 ENSMUSG000000068882.14 Ssb
 ENSMUSG000000024261.7 Syt4
 ENSMUSG000000032902.2 Slc16a1
 ENSMUSG000000025040.14 Fundc1
 ENSMUSG00000001891.17 Ugp2
 ENSMUSG000000014905.5 Dnajb9
 ENSMUSG000000070713.6 Gm10282
 ENSMUSG000000103034.2 Gm8797
 ENSMUSG000000042303.20 Sgsm3
 ENSMUSG000000033128.10 Gga1
 ENSMUSG000000019254.17 Ppp1r12c
 ENSMUSG000000029060.18 Mib2
 ENSMUSG000000040447.16 Spns2
 ENSMUSG000000057963.10 Itpk1
 ENSMUSG000000063954.8 H2ac19
 ENSMUSG000000084838.4 Gm10241

Genes in Cont3: Effect of LPS treatment in hippocampus



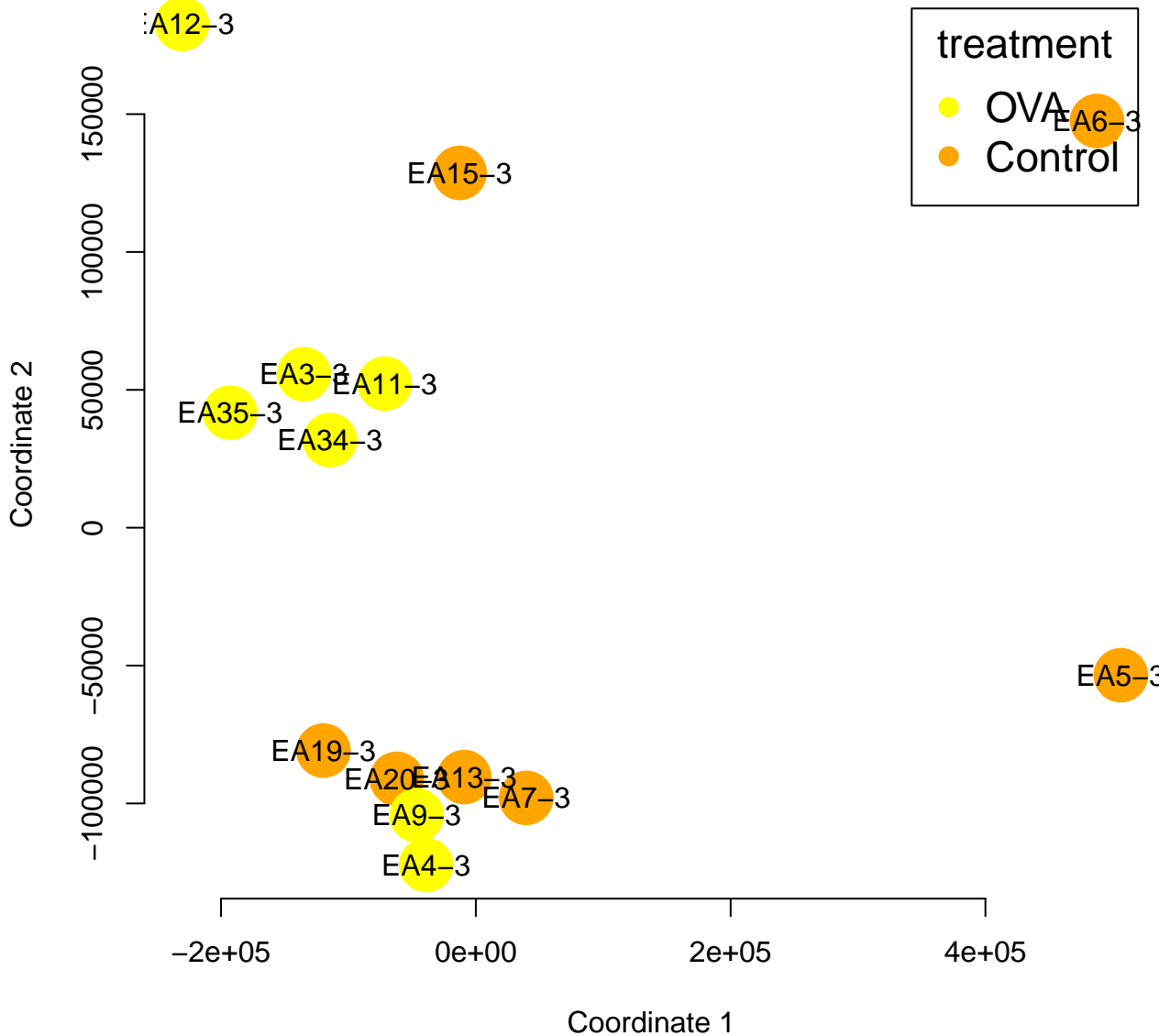
ctrl=orange, LPS=gray, OVA=yellow



Dld
 Atad1
 Capza2
 Hdgfl3
 Usp14
 Zfp60
 Herc4
 St13
 Smc6
 Ssb
 Syt4
 Slc16a1
 Fundc1
 Ugp2
 Dnajb9
 Gm10282
 Gm8797
 Sgsm3
 Gga1
 Ppp1r12c
 Mib2
 Spns2
 Itpk1
 H2ac19
 Gm10241

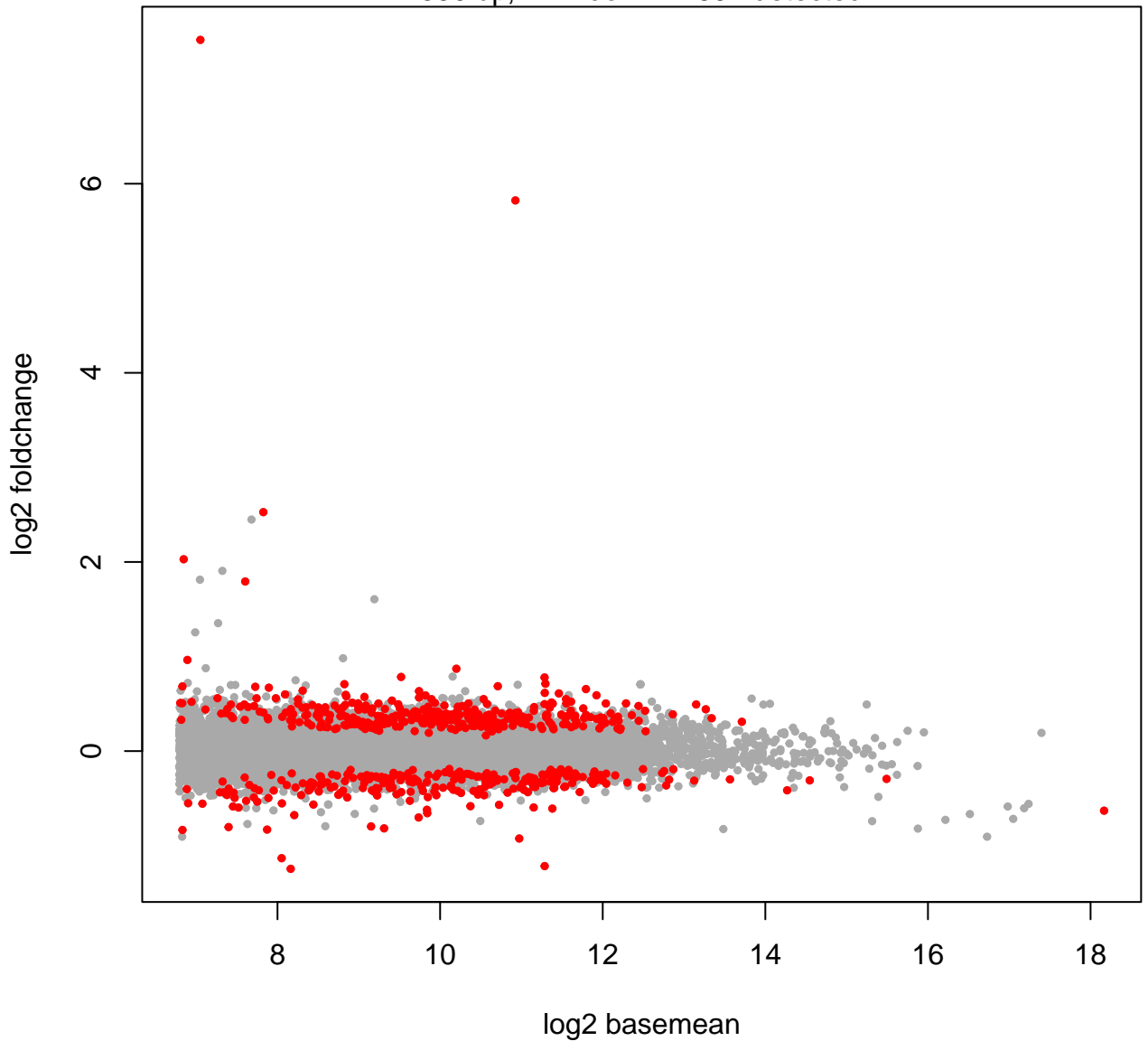
EA30-3
 EA28-3
 EA26-3
 EA24-3
 EA25-3
 EA31-3
 EA29-3
 EA5-3
 EA7-3
 EA6-3
 EA13-3
 EA19-3
 EA15-3
 EA20-3

Cont3: Effect of OVA treatment in hippocampus



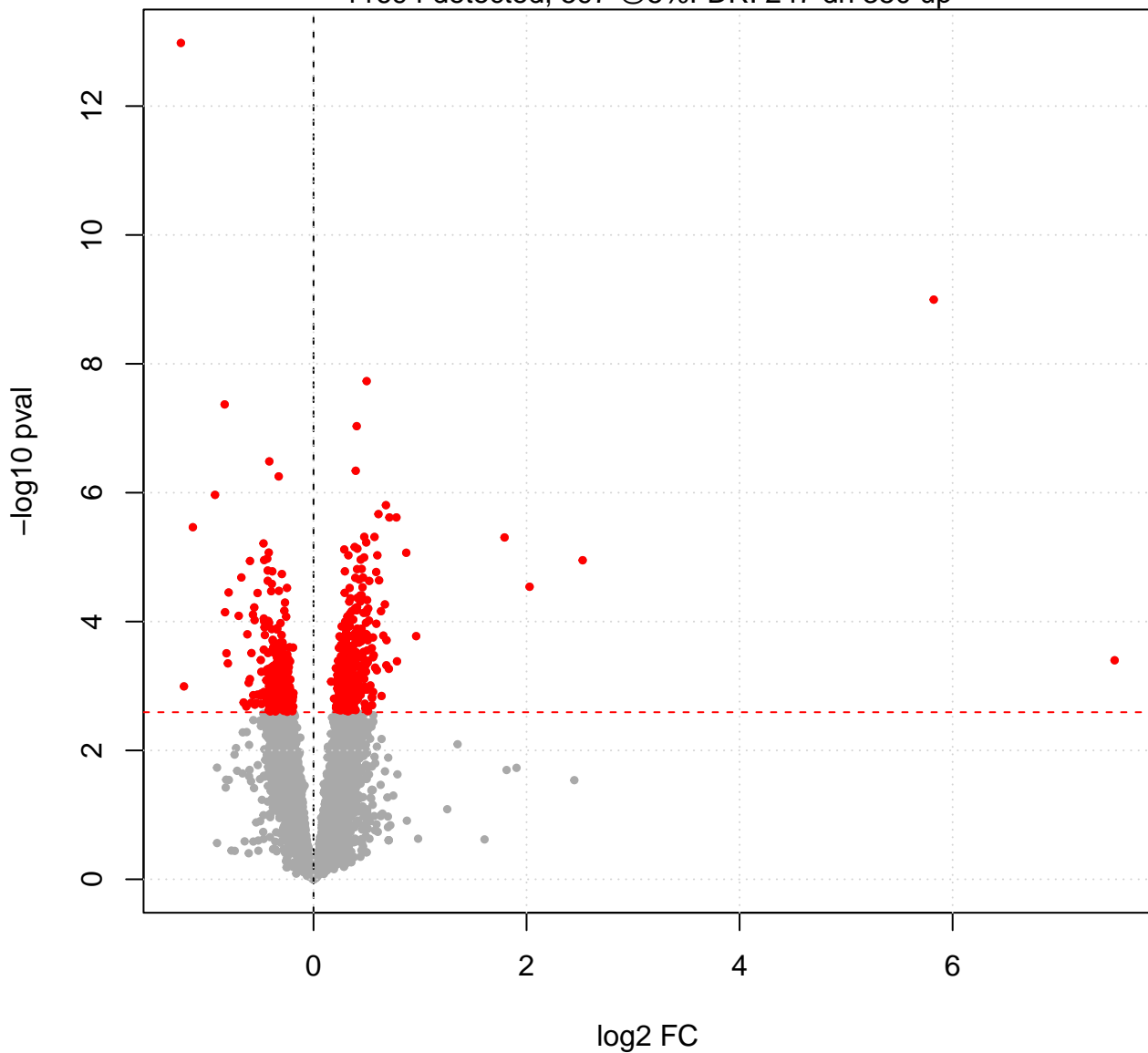
Cont3: Effect of OVA treatment in hippocampus

350 up, 247 down 11694 detected

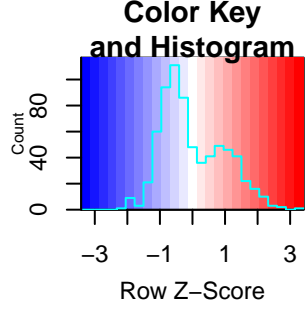


Cont3: Effect of OVA treatment in hippocampus

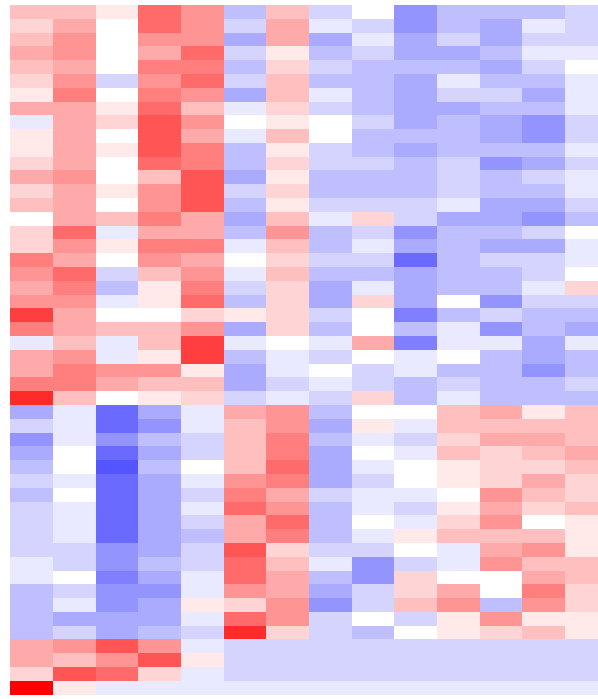
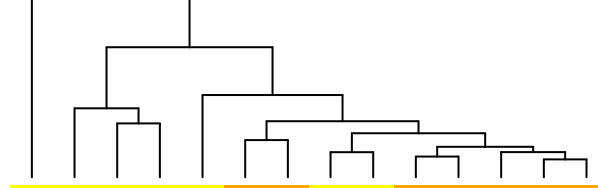
11694 detected, 597 @5%FDR: 247 dn 350 up



Genes in Cont3: Effect of OVA treatment in hippocampus



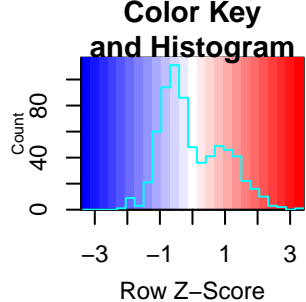
ctrl=orange, LPS=gray, OVA=yellow



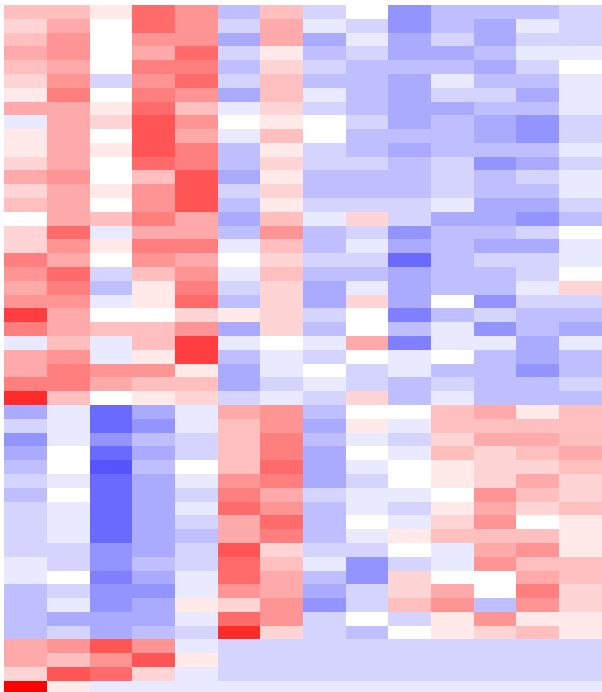
- ENSMUSG00000029576.18 Radil
- ENSMUSG00000024883.9 Rin1
- ENSMUSG00000064043.16 Trerf1
- ENSMUSG00000039834.18 Zfp335
- ENSMUSG00000033253.19 Szt2
- ENSMUSG00000032855.7 Pkd1
- ENSMUSG00000029406.16 Pitpm2
- ENSMUSG000000107499.2 Ccdc142
- ENSMUSG00000031858.17 Mau2
- ENSMUSG00000032741.10 Tpcn1
- ENSMUSG00000024222.18 Fkbp5
- ENSMUSG00000060862.11 Zbtb40
- ENSMUSG00000022197.17 Pdzd2
- ENSMUSG00000089739.3 Gm20431
- ENSMUSG00000045624.16 Esf1
- ENSMUSG00000079184.11 Mphosph8
- ENSMUSG00000037640.16 Zfp60
- ENSMUSG00000001707.9 Eef1e1
- ENSMUSG00000058258.15 Idi1
- ENSMUSG00000061477.5 Rps7
- ENSMUSG00000033036.10 Gm7879
- ENSMUSG00000044285.9 Ubb-ps
- ENSMUSG00000008668.16 Rps18
- ENSMUSG00000084838.4 Gm10241
- ENSMUSG00000069008.4 Gm5537

- EA4-3
- EA34-3
- EA12-3
- EA35-3
- EA3-3
- EA5-3
- EA7-3
- EA9-3
- EA11-3
- EA19-3
- EA20-3
- EA6-3
- EA15-3
- EA13-3

Genes in Cont3: Effect of OVA treatment in hippocampus



ctrl=orange, LPS=gray, OVA=yellow



- Radil
- Rin1
- Tref1
- Zfp335
- Szt2
- Pkd1
- Pitpm2
- Ccdc142
- Mau2
- Tpcn1
- Fkbp5
- Zbtb40
- Pdzd2
- Gm20431
- Esf1
- Mphosph8
- Zfp60
- Eef1e1
- Idi1
- Rps7
- Gm7879
- Ubb-ps
- Rps18
- Gm10241
- Gm5537

- EA4-3
- EA34-3
- EA12-3
- EA35-3
- EA3-3
- EA5-3
- EA7-3
- EA9-3
- EA11-3
- EA19-3
- EA20-3
- EA6-3
- EA15-3
- EA13-3