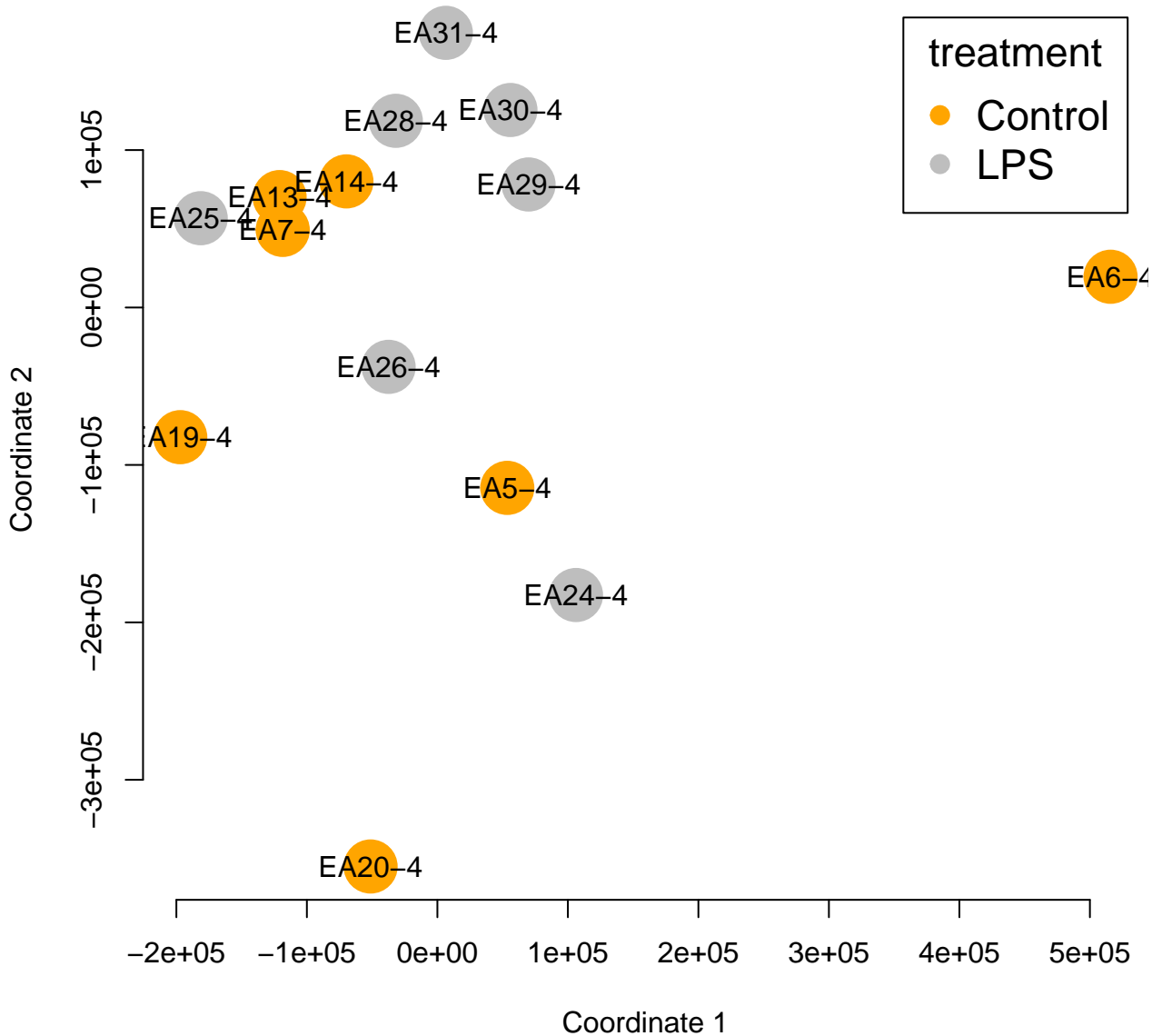
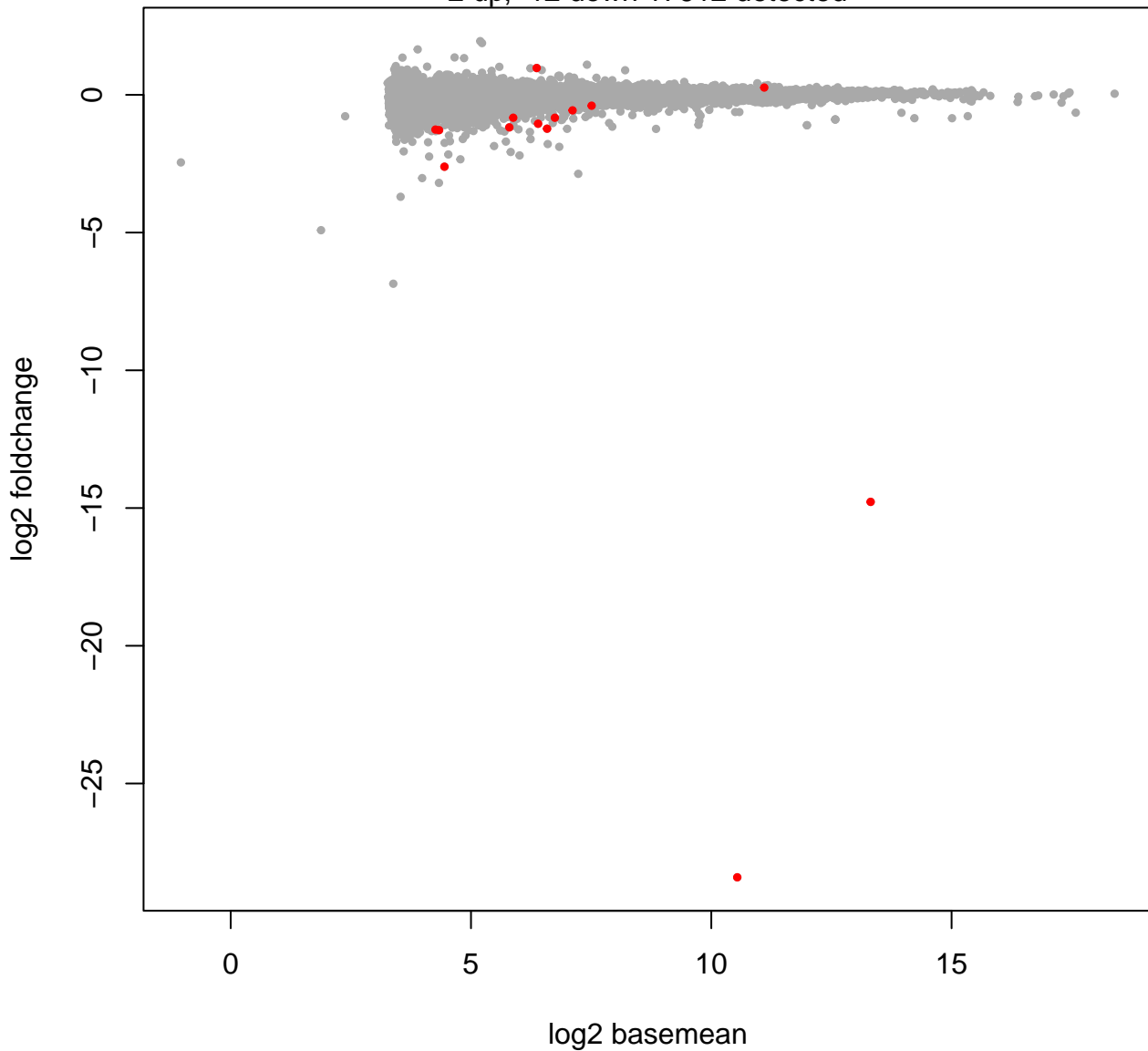


Cont4: Effect of LPS treatment in PAG



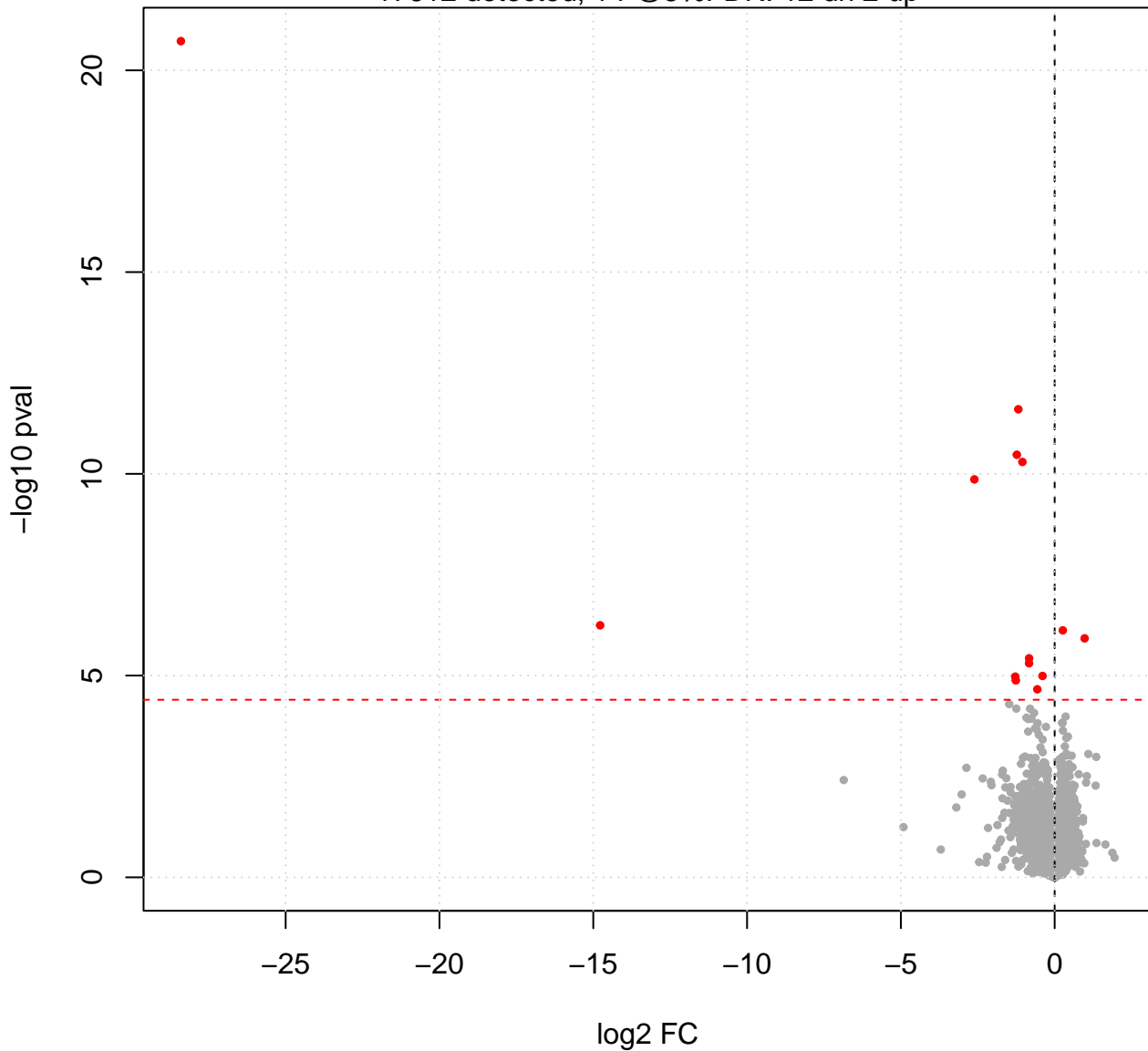
Cont4: Effect of LPS treatment in PAG

2 up, 12 down 17612 detected

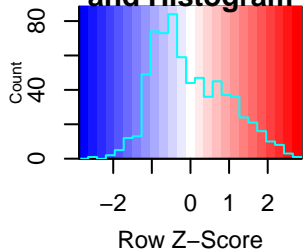


Cont4: Effect of LPS treatment in PAG

17612 detected, 14 @5%FDR: 12 dn 2 up

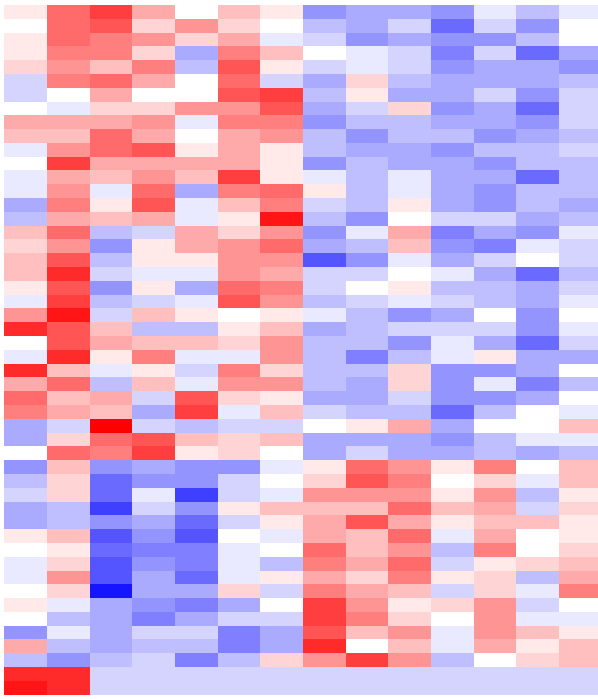
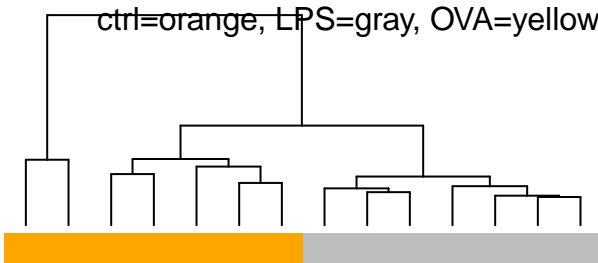


Color Key and Histogram



genes in Cont4: Effect of LPS treatment in PAG

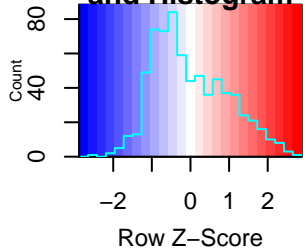
ctrl=orange, LPS=gray, OVA=yellow



- ENSMUSG00000057143.16 Trim12c
- ENSMUSG00000067212.9 H2-T23
- ENSMUSG00000033592.8 Isg15
- ENSMUSG00000002289.17 Angptl4
- ENSMUSG00000025498.16 Irf7
- ENSMUSG00000079363.8 Gbp4
- ENSMUSG00000033355.7 Rtp4
- ENSMUSG00000020641.17 Rsad2
- ENSMUSG00000021903.12 Galnt15
- ENSMUSG00000024079.5 Eif2ak2
- ENSMUSG00000066894.15 Vsig10
- ENSMUSG00000079470.9 Utp14b
- ENSMUSG00000034422.15 Parp14
- ENSMUSG00000030107.11 Usp18
- ENSMUSG00000113847.2 Gm48799
- ENSMUSG00000054072.13 Iigp1
- ENSMUSG00000074971.5 Fibrin
- ENSMUSG00000052229.6 Gpr17
- ENSMUSG00000015085.9 Entpd2
- ENSMUSG00000027333.19 Smox
- ENSMUSG00000019139.11 Isyna1
- ENSMUSG00000028655.12 Mfsd2a
- ENSMUSG00000036915.18 Kirrel2
- ENSMUSG00000047420.9 Fam180a
- ENSMUSG00000101111.2 Gm28437

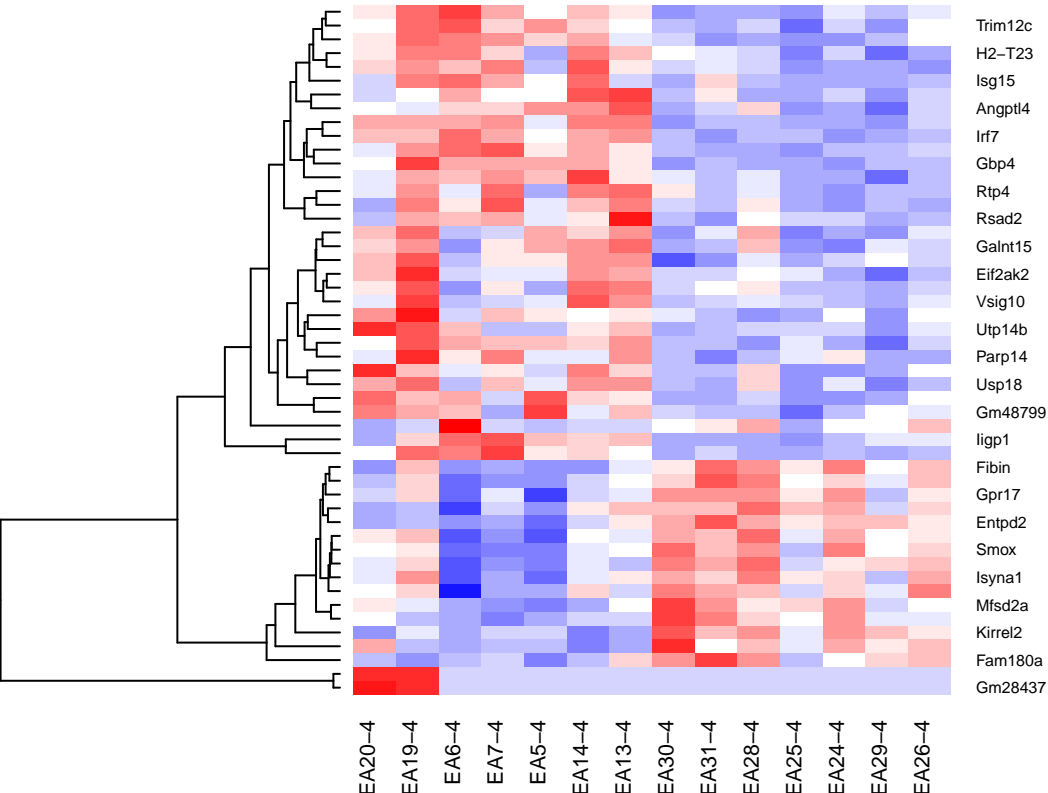
- EA20-4
- EA19-4
- EA6-4
- EA7-4
- EA5-4
- EA14-4
- EA13-4
- EA30-4
- EA31-4
- EA28-4
- EA25-4
- EA24-4
- EA29-4
- EA26-4

Color Key and Histogram

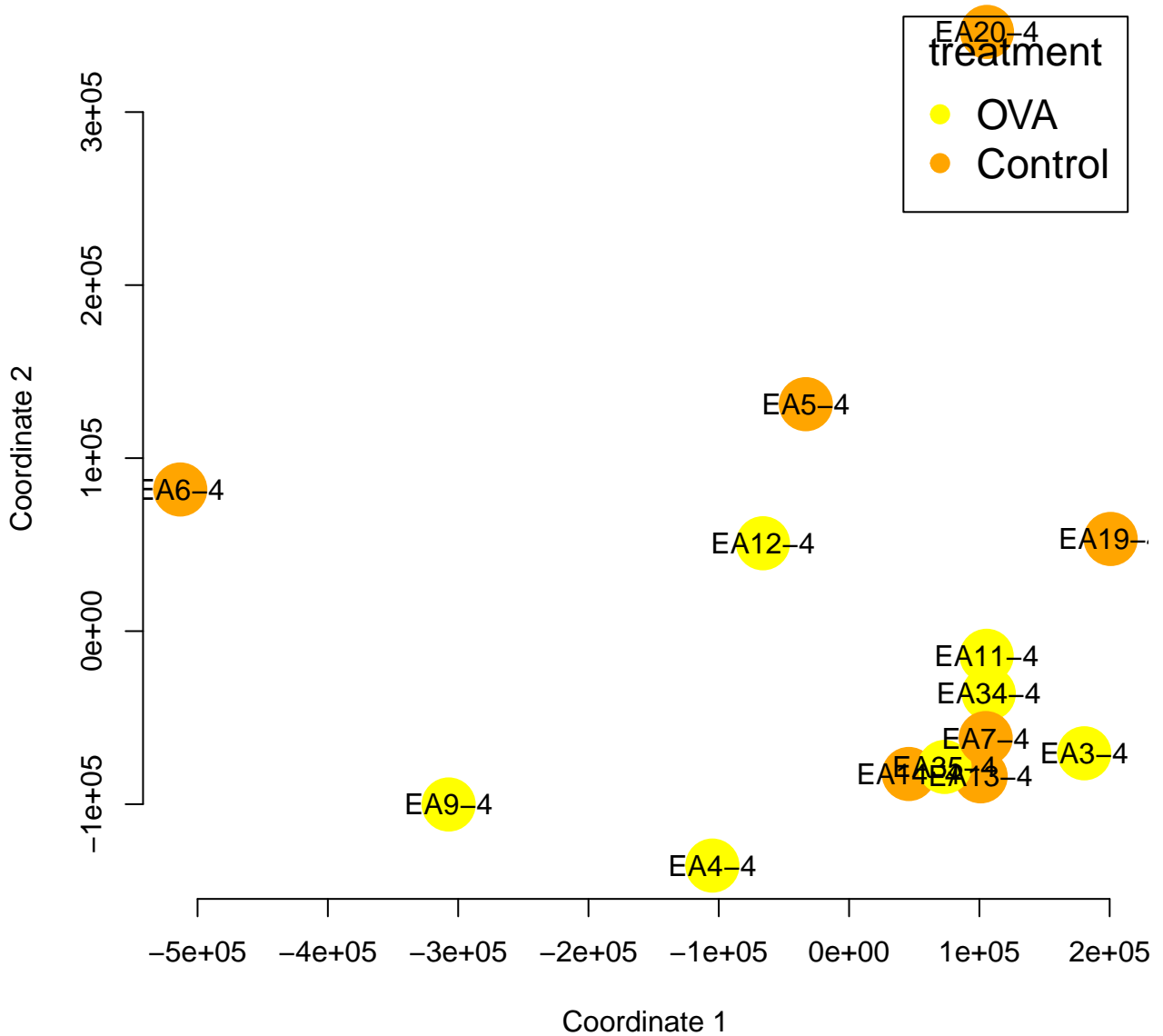


genes in Cont3: Effect of LPS treatment in PAG

ctrl=orange, LPS=gray, OVA=yellow

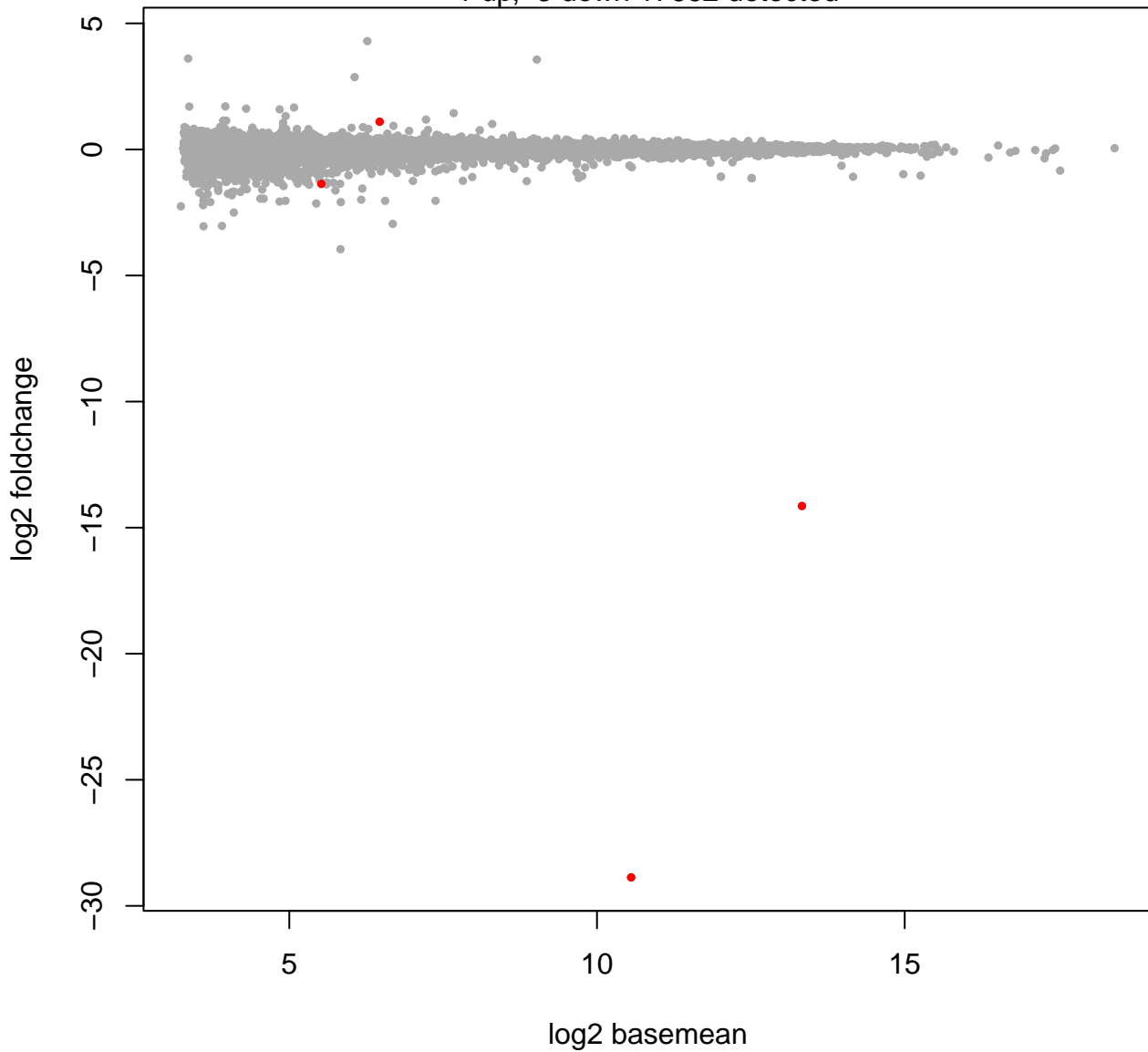


Cont4: Effect of OVA treatment in PAG



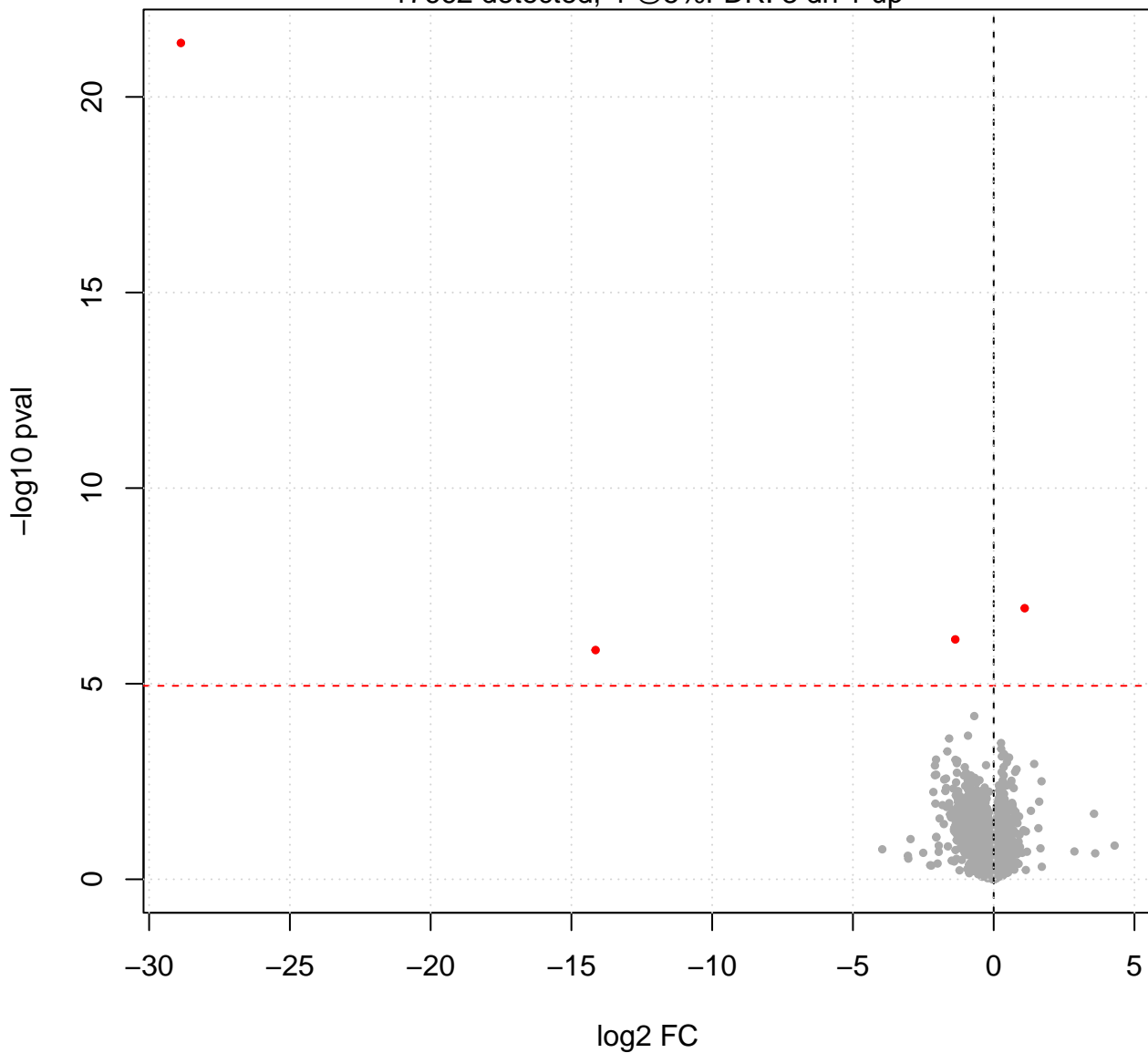
Cont4: Effect of OVA treatment in PAG

1 up, 3 down 17662 detected

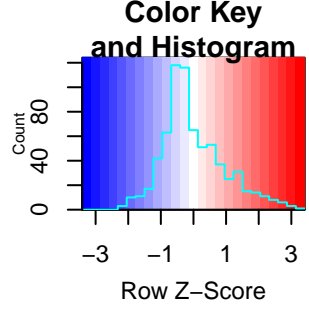


Cont4: Effect of OVA treatment in PAG

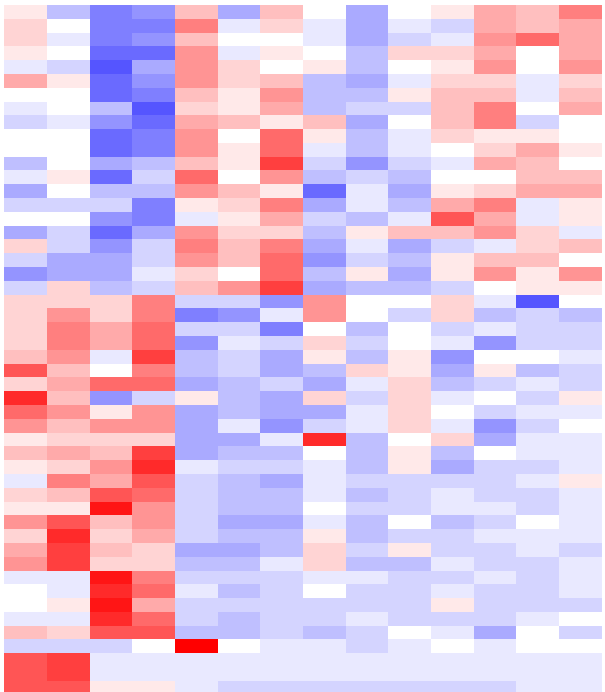
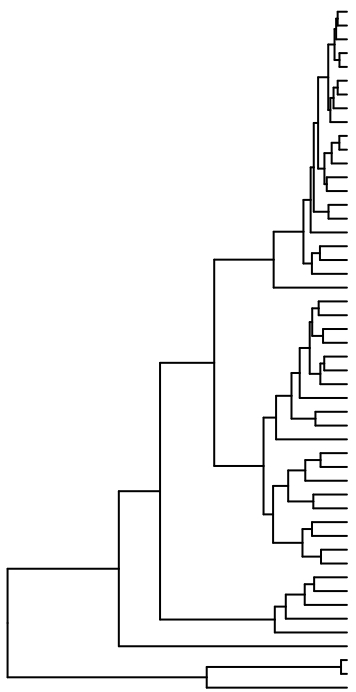
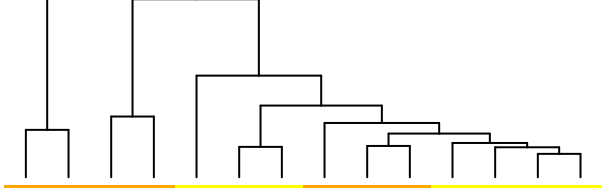
17662 detected, 4 @5%FDR: 3 dn 1 up



genes in Cont4: Effect of OVA treatment in PAG



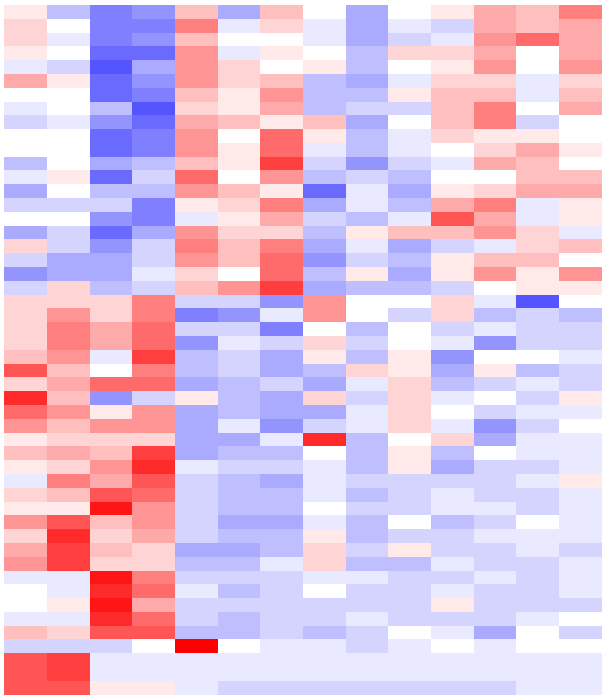
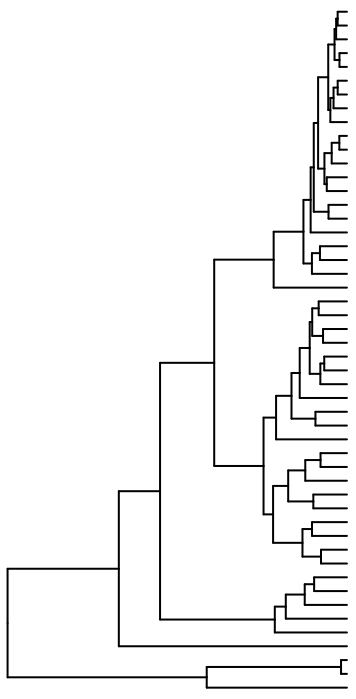
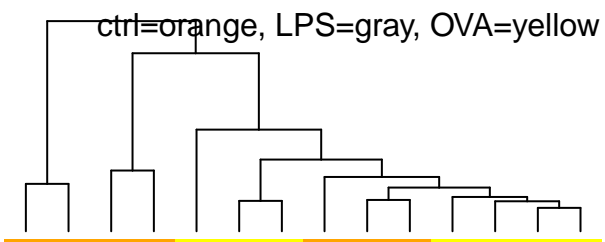
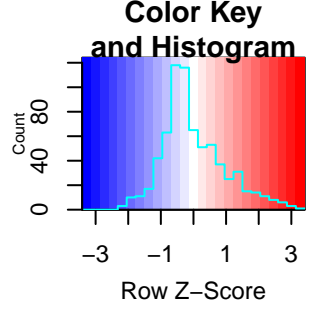
ctrl=orange, LPS=gray, OVA=yellow



- ENSMUSG00000013089.16 Etv5
- ENSMUSG00000041712.8 Ubr7
- ENSMUSG00000022790.15 Igsf11
- ENSMUSG00000040957.16 Cables1
- ENSMUSG00000025931.16 Paqr8
- ENSMUSG0000007682.8 Dio2
- ENSMUSG00000032278.12 Paqr5
- ENSMUSG00000028179.13 Cth
- ENSMUSG00000040170.14 Fmo2
- ENSMUSG00000106896.2 G630022F23Rik
- ENSMUSG00000110656.2 Gm20735
- ENSMUSG00000118642.2 AY036118
- ENSMUSG00000113388.2 Gm48111
- ENSMUSG00000061331.6 Gm17132
- ENSMUSG00000097283.2 Gm26686
- ENSMUSG00000105008.2 Gm43652
- ENSMUSG00000055088.6 Olfr354
- ENSMUSG00000108827.4 Olfr1310
- ENSMUSG00000094672.3 Vmn2r25
- ENSMUSG00000106604.3 Gm42535
- ENSMUSG00000115632.2 Gm17922
- ENSMUSG00000105553.2 Gm42514
- ENSMUSG00000091006.4 Vmn2r69
- ENSMUSG00000102070.2 Gm28661
- ENSMUSG00000110297.2 Gm45647

- EA19-4
- EA20-4
- EA6-4
- EA5-4
- EA34-4
- EA11-4
- EA4-4
- EA14-4
- EA7-4
- EA13-4
- EA9-4
- EA12-4
- EA3-4
- EA35-4

genes in Cont4: Effect of OVA treatment in PAG



- Etv5
- Ubr7
- Igsf11
- Cables1
- Paqr8
- Dio2
- Paqr5
- Cth
- Fmo2
- G630022F23Rik
- Gm20735
- AY036118
- Gm48111
- Gm17132
- Gm26686
- Gm43652
- Olfr354
- Olfr1310
- Vmn2r25
- Gm42535
- Gm17922
- Gm42514
- Vmn2r69
- Gm28661
- Gm45647

- EA19-4
- EA20-4
- EA6-4
- EA5-4
- EA34-4
- EA11-4
- EA4-4
- EA14-4
- EA7-4
- EA13-4
- EA9-4
- EA12-4
- EA3-4
- EA35-4