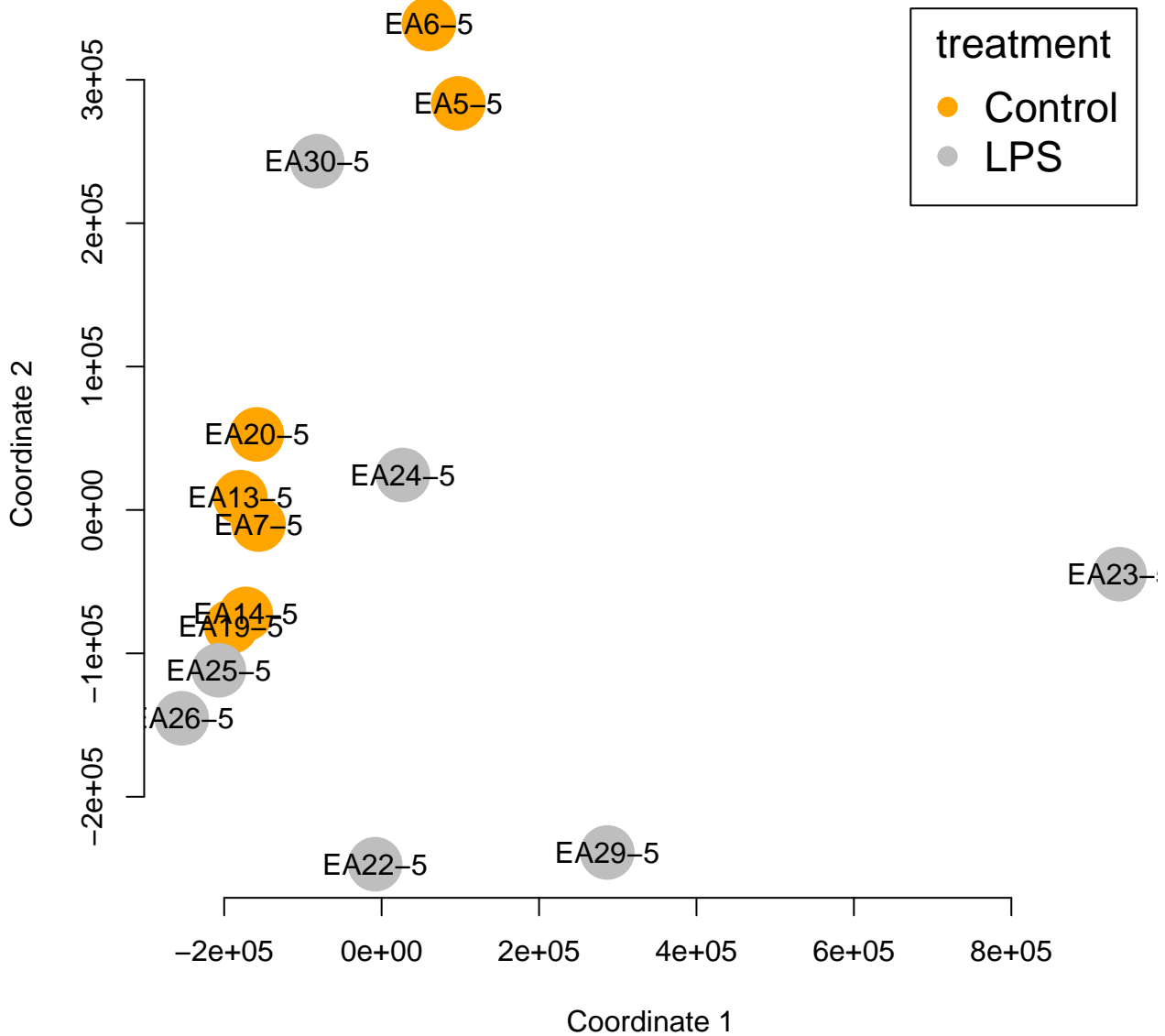
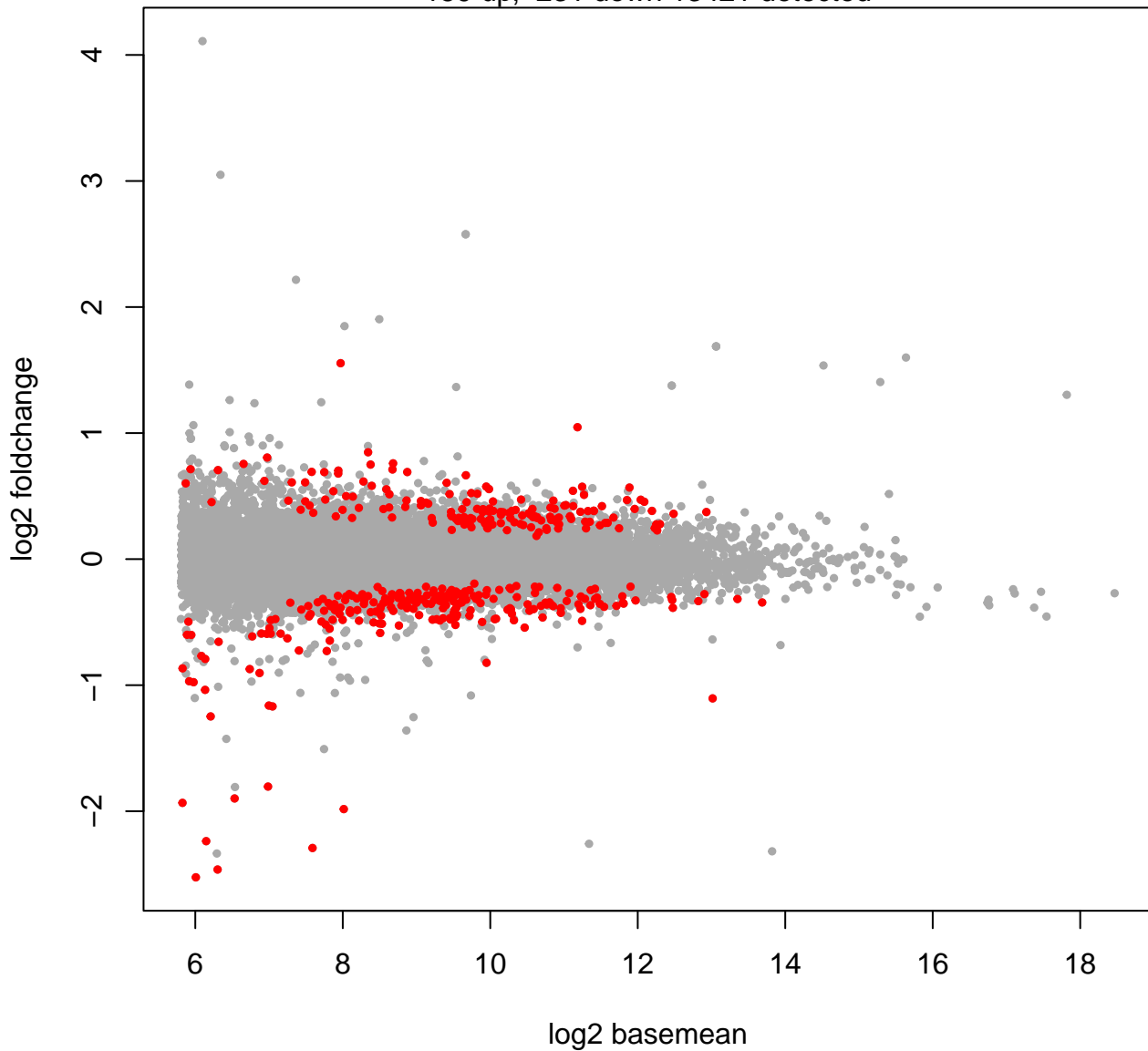


### Cont5: Effect of LPS treatment in NI



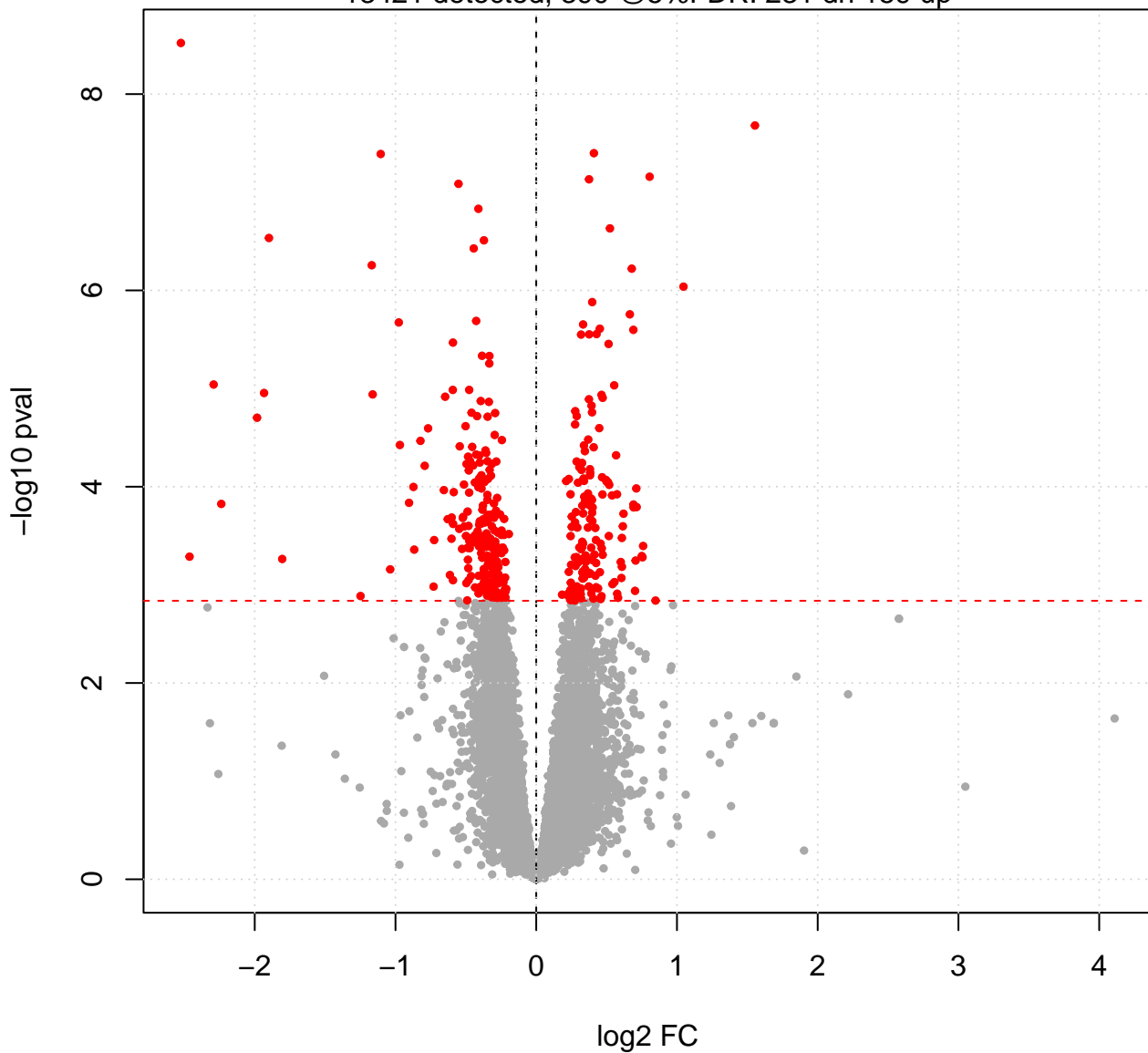
### Cont5: Effect of LPS treatment in NI

159 up, 231 down 13421 detected

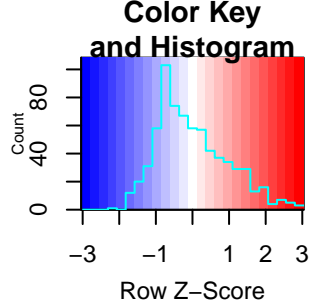


# Cont5: Effect of LPS treatment in NI

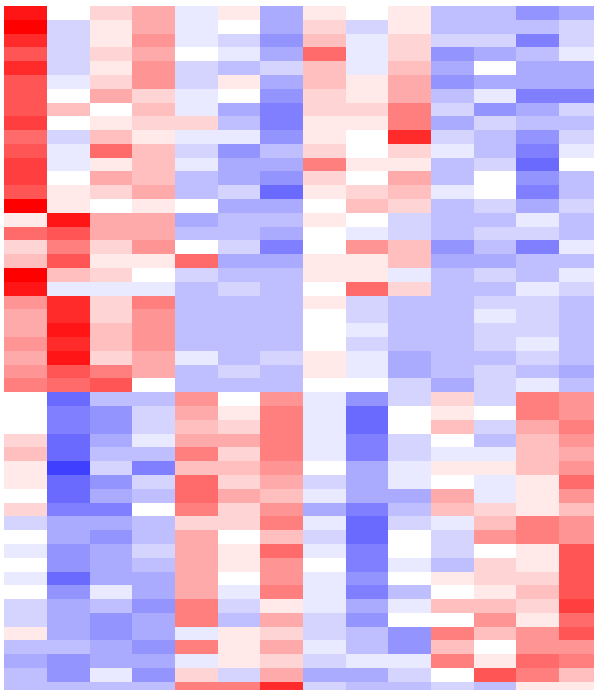
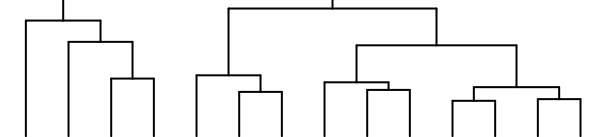
13421 detected, 390 @5%FDR: 231 dn 159 up



# 0 genes in Cont5: Effect of LPS treatment in NI



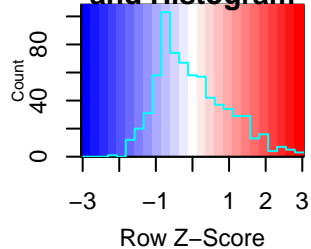
ctrl=orange, LPS=gray, OVA=yellow



ENSMUSG00000020528.15 Prpsap2  
 ENSMUSG00000046523.6 Kctd4  
 ENSMUSG00000036890.14 Gtdc1  
 ENSMUSG00000021696.10 Elovl7  
 ENSMUSG00000074794.11 Arrdc3  
 ENSMUSG00000040253.16 Gbp7  
 ENSMUSG00000070713.6 Gm10282  
 ENSMUSG00000048108.14 Tmem72  
 ENSMUSG00000027875.13 Hmgcs2  
 ENSMUSG00000078922.10 Tgtp1  
 ENSMUSG00000047230.7 Cldn2  
 ENSMUSG0000004655.6 Aqp1  
 ENSMUSG00000026579.9 F5  
 ENSMUSG00000003477.6 Inmt  
 ENSMUSG00000020776.19 Fbf1  
 ENSMUSG00000045039.10 Megf8  
 ENSMUSG00000044576.7 Garem2  
 ENSMUSG00000028927.7 Padl2  
 ENSMUSG00000059323.15 Tonsl  
 ENSMUSG00000037933.17 Bicd2  
 ENSMUSG00000039959.14 Hip1  
 ENSMUSG00000069833.14 Ahnak  
 ENSMUSG00000004891.17 Nes  
 ENSMUSG000000113337.2 Gm19220  
 ENSMUSG00000044211.10 Gm7887

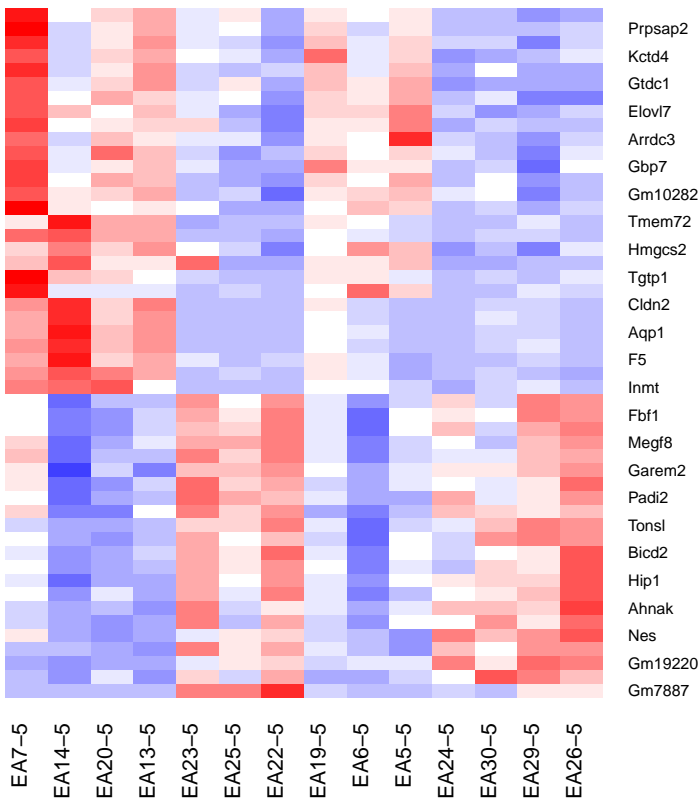
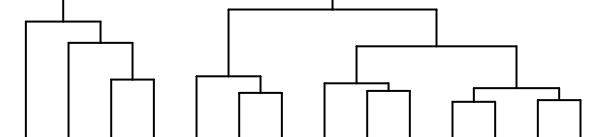
EA7-5  
 EA14-5  
 EA20-5  
 EA13-5  
 EA23-5  
 EA25-5  
 EA22-5  
 EA19-5  
 EA6-5  
 EA5-5  
 EA24-5  
 EA30-5  
 EA29-5  
 EA26-5

# Color Key and Histogram

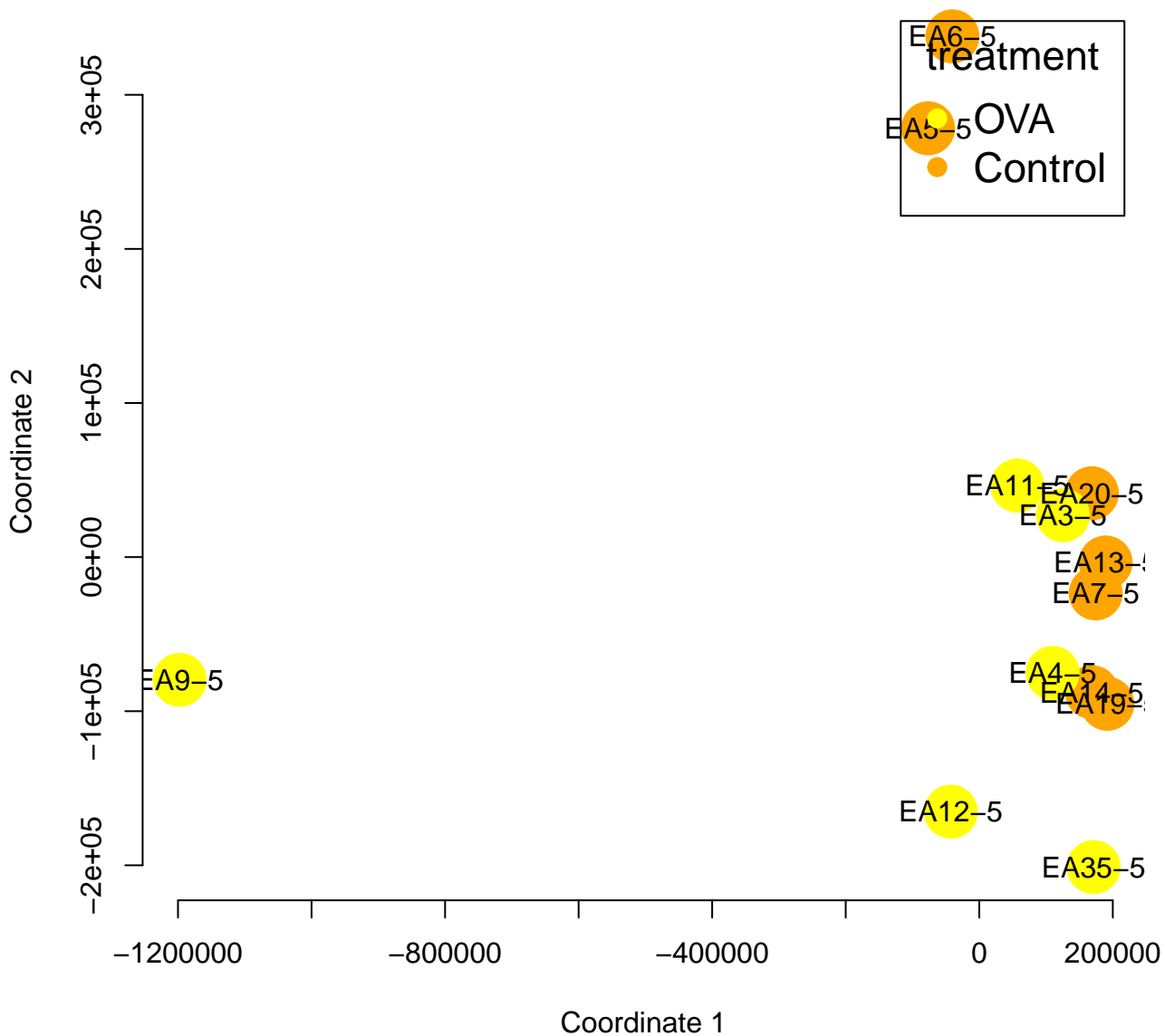


# 0 genes in Cont3: Effect of LPS treatment in NI

ctrl=orange, LPS=gray, OVA=yellow

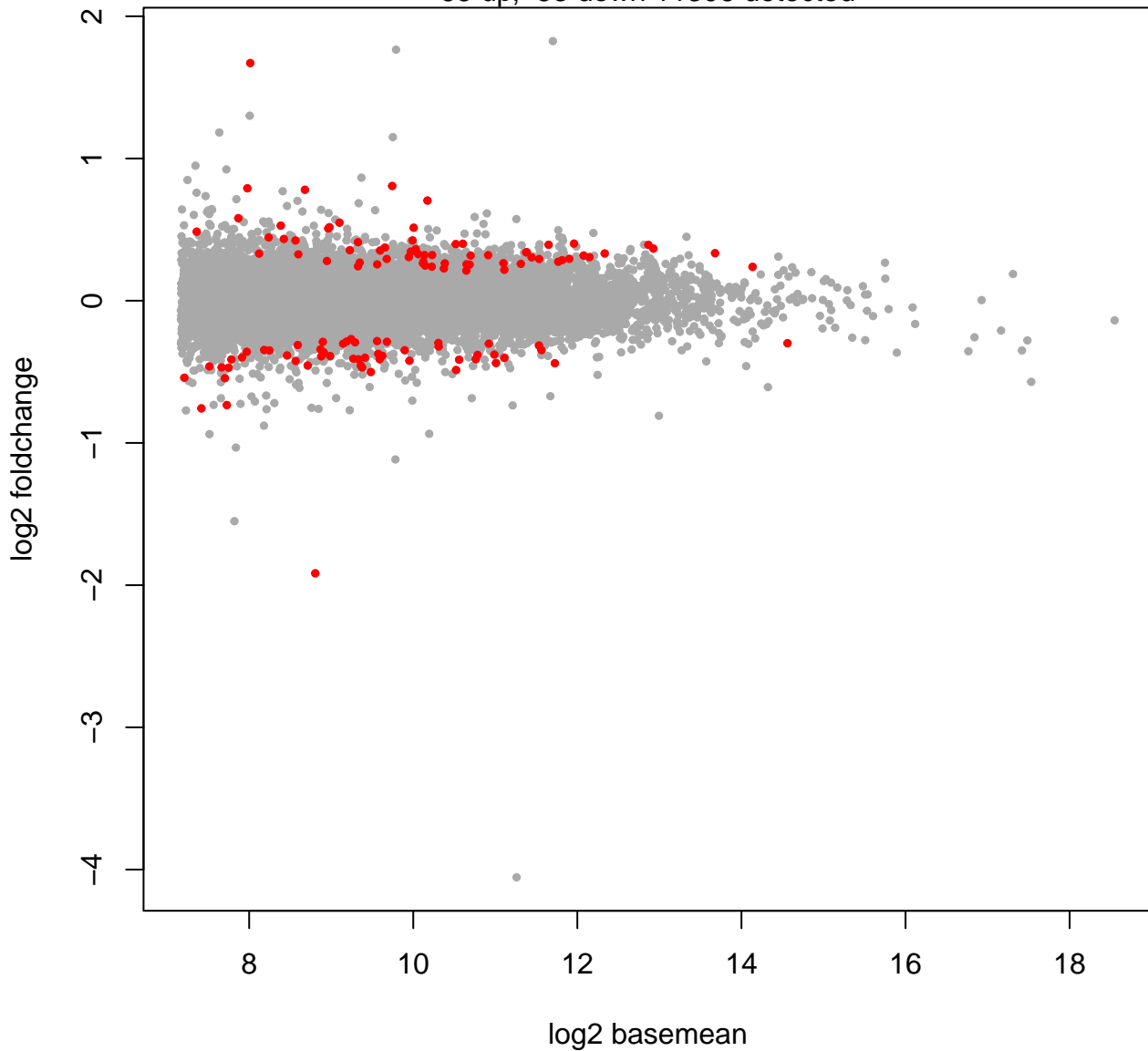


# Cont5: Effect of OVA treatment in NI



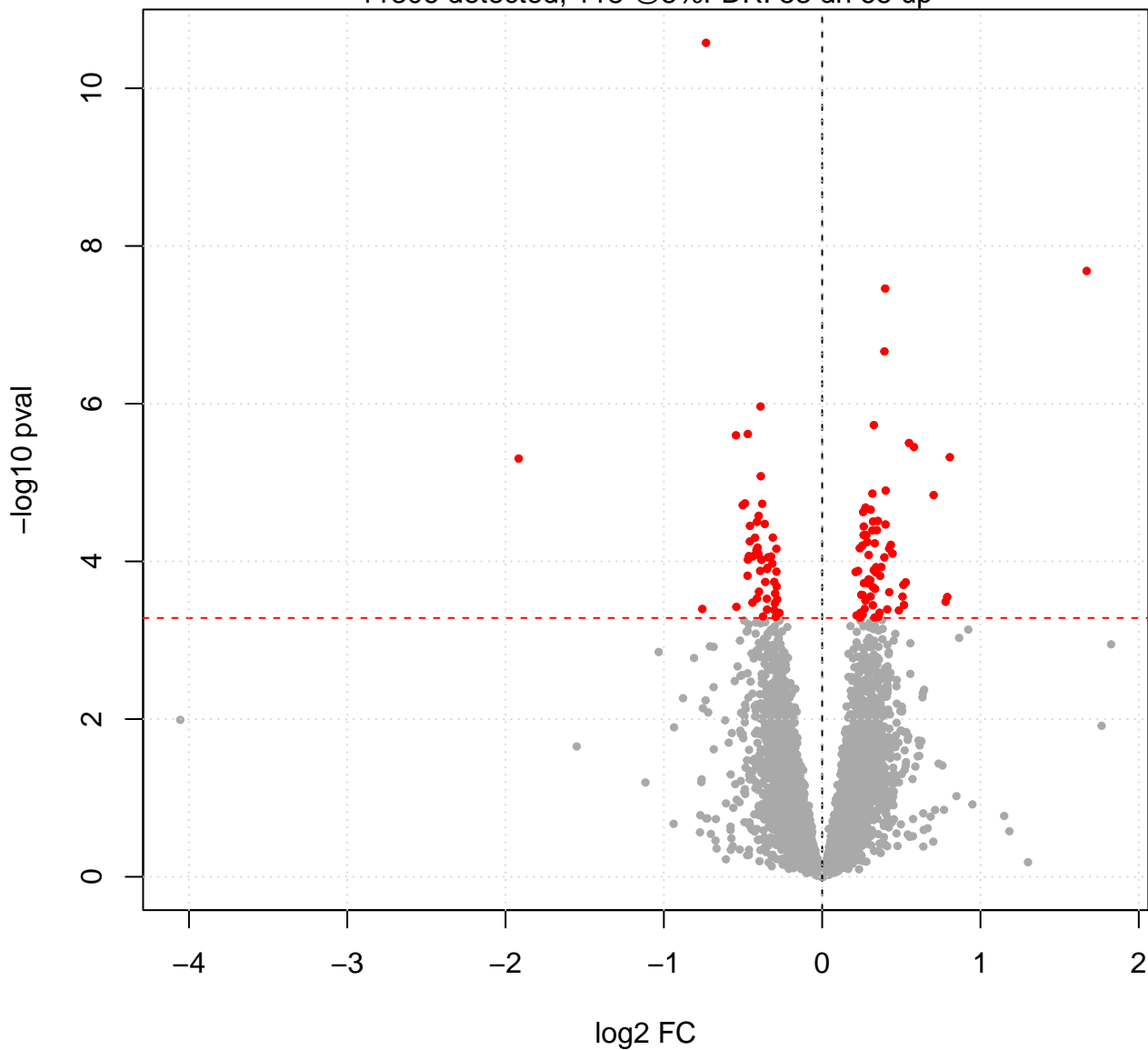
### Cont4: Effect of OVA treatment in NI

65 up, 53 down 11306 detected



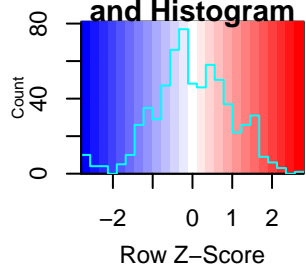
# Cont5: Effect of OVA treatment in NI

11306 detected, 118 @5%FDR: 53 dn 65 up



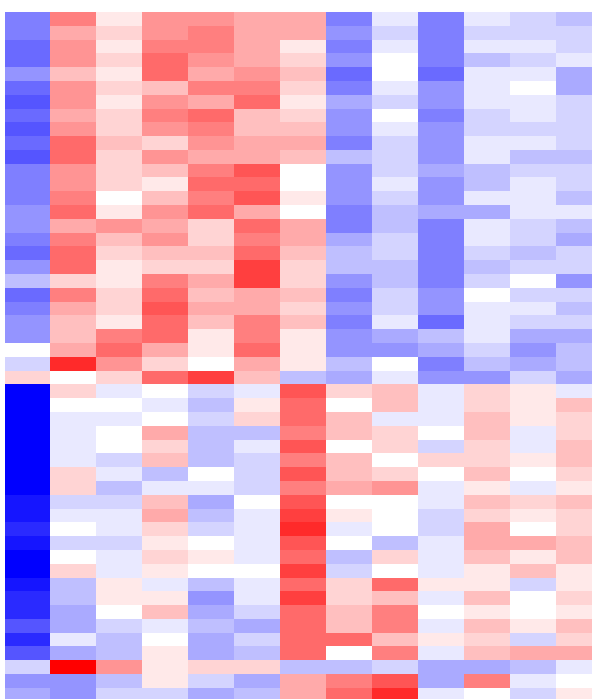
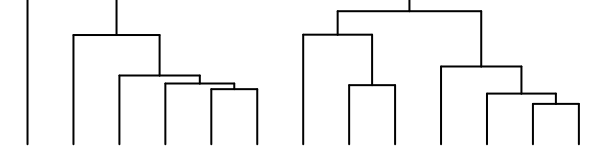


# Color Key and Histogram



# 0 genes in Cont5: Effect of OVA treatment in NI

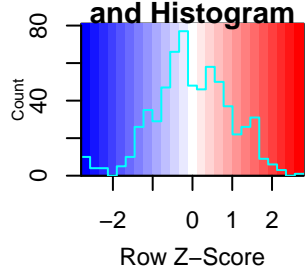
ctrl=orange, LPS=gray, OVA=yellow



- ENSMUSG00000040913.12 Fbxw4
- ENSMUSG00000028911.17 Srsf4
- ENSMUSG00000038545.14 Cul7
- ENSMUSG00000031622.17 Sin3b
- ENSMUSG00000021913.9 Ogdhl
- ENSMUSG00000055322.17 Tns1
- ENSMUSG00000045039.10 Megf8
- ENSMUSG00000002980.15 Bcam
- ENSMUSG00000043733.15 Ptpn11
- ENSMUSG00000074505.7 Fat3
- ENSMUSG00000015944.10 Castor2
- ENSMUSG00000021136.14 Smoc1
- ENSMUSG00000019232.15 Etnpl
- ENSMUSG00000027357.17 Crls1
- ENSMUSG00000040520.8 Manea
- ENSMUSG00000027206.14 Cops2
- ENSMUSG00000055782.10 Abcd2
- ENSMUSG00000063406.12 Tmed5
- ENSMUSG00000027708.15 Dcun1d1
- ENSMUSG00000026492.12 Tfb2m
- ENSMUSG00000079508.9 Apoo
- ENSMUSG00000068798.11 Rap1a
- ENSMUSG00000036934.10 4921524J17Rik
- ENSMUSG00000002831.15 Plin4
- ENSMUSG00000067038.7 Rps12-ps3

- EA9-5
- EA4-5
- EA11-5
- EA12-5
- EA35-5
- EA3-5
- EA7-5
- EA6-5
- EA5-5
- EA14-5
- EA13-5
- EA19-5
- EA20-5

### Color Key and Histogram



### 0 genes in Cont5: Effect of OVA treatment in NI

