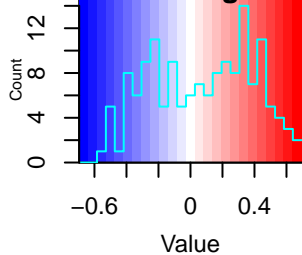
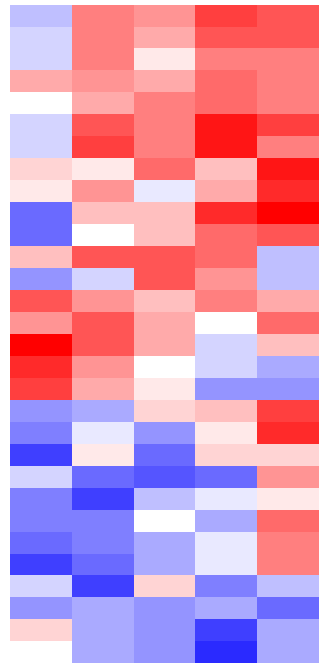
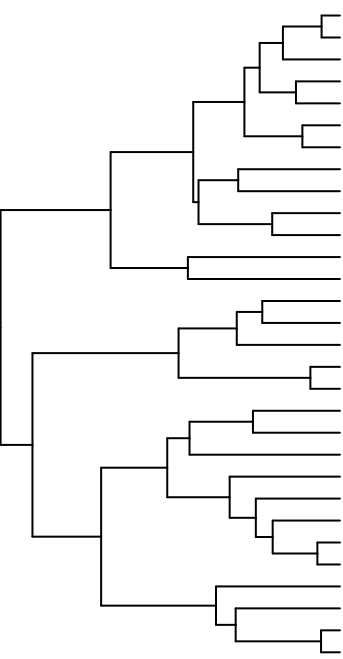
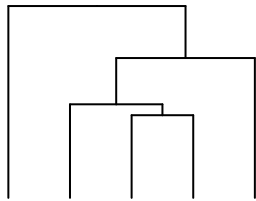


Color Key and Histogram



pathways LPS all tissues



s.ni
s.hip
s.army
s.hyp
s.pag

- CROSSLINKING OF COLLAGEN FIBRILS
- CD28 DEPENDENT VAV1 PATHWAY
- DEFECTIVE B4GALT7 CAUSES EDS PROGEROID TYPE
- ALPHA LINOLENIC OMEGA3 AND LINOLEIC OMEGA6 ACID METABOLISM
- RHOBTB3 ATPASE CYCLE
- TRANSPORT OF CONNEXONS TO THE PLASMA MEMBRANE
- POST CHAPERONIN TUBULIN FOLDING PATHWAY
- CREB1 PHOSPHORYLATION THROUGH THE ACTIVATION OF ADENYLAT
- MATURATION OF NUCLEOPROTEIN
- FORMATION OF TUBULIN FOLDING INTERMEDIATES BY CCT TRIC
- ACTIVATION OF RAC1
- MET ACTIVATES RAP1 AND RAC1
- REGULATION OF TP53 ACTIVITY THROUGH ASSOCIATION WITH CO FAC
- SYNTHESIS SECRETION AND INACTIVATION OF GLUCAGON LIKE PEPT
- REDUCTION OF CYTOSOLIC CA LEVELS
- ADENYLATE CYCLASE ACTIVATING PATHWAY
- COOPERATION OF PREFOLDIN AND TRIC CCT IN ACTIN AND TUBULIN
- CGMP EFFECTS
- PROCESSING AND ACTIVATION OF SUMO
- SYNTHESIS OF ACTIVE UBIQUITIN ROLES OF E1 AND E2 ENZYMES
- INTERACTION BETWEEN L1 AND ANKYRINS
- SEALING OF THE NUCLEAR ENVELOPE NE BY ESCRT III
- REGULATION OF RUNX1 EXPRESSION AND ACTIVITY
- IRE1ALPHA ACTIVATES CHAPERONES
- CHK1 CHK2 CDS1 MEDIATED INACTIVATION OF CYCLIN B CDK1 COMPL
- CYTOSOLIC IRON SULFUR CLUSTER ASSEMBLY
- PHASE 2 PLATEAU PHASE
- ACTIVATION OF SMO
- GOLGI CISTERNAE PERICENTRIOLAR STACK REORGANIZATION
- GAP JUNCTION ASSEMBLY