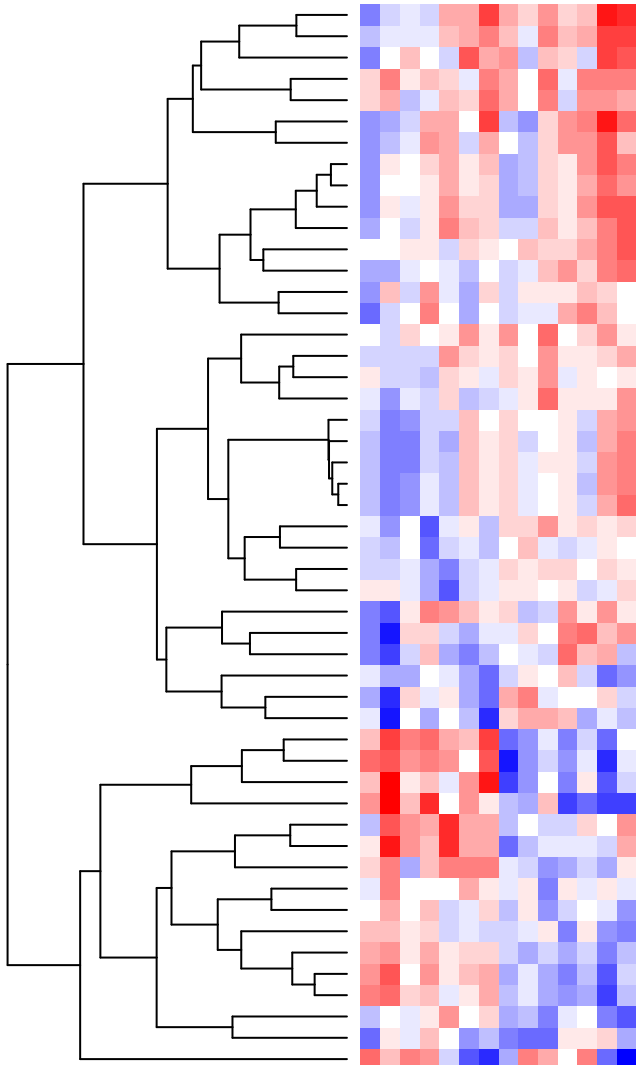
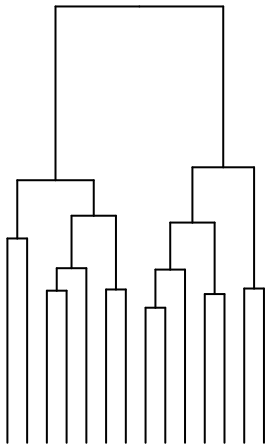
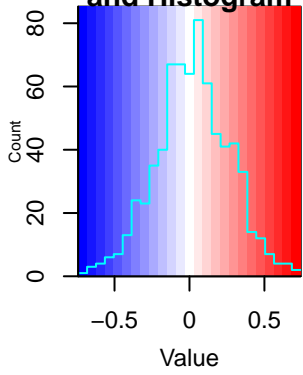


Color Key and Histogram



- RECYCLING OF EIF2 GDP
- FOLDING OF ACTIN BY CCT TRIC
- ENDOSOMAL VACUOLAR PATHWAY
- PD 1 SIGNALING
- GENERATION OF SECOND MESSENGER MOLECULES
- FLT3 SIGNALING BY CBL MUTANTS
- NEGATIVE REGULATION OF FLT3
- EUKARYOTIC TRANSLATION ELONGATION
- SRP DEPENDENT COTRANSLATIONAL PROTEIN TARGETING TO MEMBRANE
- SARS COV 1 MODULATES HOST TRANSLATION MACHINERY
- SARS COV 2 MODULATES HOST TRANSLATION MACHINERY
- RESPONSE OF EIF2AK1 HRI TO HEME DEFICIENCY
- NGF STIMULATED TRANSCRIPTION
- CHEMOKINE RECEPTORS BIND CHEMOKINES
- INTERLEUKIN 10 SIGNALING
- KSRP KHSRP BINDS AND DESTABILIZES MRNA
- SNRNP ASSEMBLY
- SUMOYLATION OF DNA REPLICATION PROTEINS
- TP53 REGULATES TRANSCRIPTION OF GENES INVOLVED IN G2 CELL CYCLE ARREST
- CONDENSATION OF PROPHASE CHROMOSOMES
- DNA METHYLATION
- ASSEMBLY OF THE ORC COMPLEX AT THE ORIGIN OF REPLICATION
- SIRT1 NEGATIVELY REGULATES RRNA EXPRESSION
- ACTIVATED PKN1 STIMULATES TRANSCRIPTION OF AR ANDROGEN RECEPTOR REGULATED GENES KLF
- FORMATION OF SENESCENCE ASSOCIATED HETEROCHROMATIN FOCI SAHF
- SEALING OF THE NUCLEAR ENVELOPE NE BY ESCRT III
- REGULATION OF BETA CELL DEVELOPMENT
- REGULATION OF GENE EXPRESSION IN BETA CELLS
- STAT5 ACTIVATION DOWNSTREAM OF FLT3 ITD MUTANTS
- VITAMIN C ASCORBATE METABOLISM
- SYNTHESIS OF 5 EICOSATETRAENOIC ACIDS
- PTK6 REGULATES RHO GTPASES RAS GTPASE AND MAP KINASES
- MAPK1 ERK2 ACTIVATION
- NFE2L2 REGULATES PENTOSE PHOSPHATE PATHWAY GENES
- CREATION OF C4 AND C2 ACTIVATORS
- LECTIN PATHWAY OF COMPLEMENT ACTIVATION
- INTERLEUKIN 36 PATHWAY
- ORGANIC ANION TRANSPORT
- FATTY ACIDS
- EICOSANOIDS
- ASPIRIN ADME
- DEFENSINS
- O GLYCOSYLATION OF TSR DOMAIN CONTAINING PROTEINS
- ACYL CHAIN REMODELLING OF PC
- MET ACTIVATES PTK2 SIGNALING
- DIGESTION
- DIGESTION AND ABSORPTION
- SCAVENGING OF HEME FROM PLASMA
- METABOLISM OF ANGIOTENSINOGEN TO ANGIOTENSINS
- SENSORY PERCEPTION OF SALTY TASTE

- colorectal can
- COPD
- breast cancer
- osteoarthritis
- prostate cancer
- parkinsons
- stroke
- lung cancer
- alzheimers
- diabetes
- chronic pain
- rheumatoid art
- heart disease
- CKD