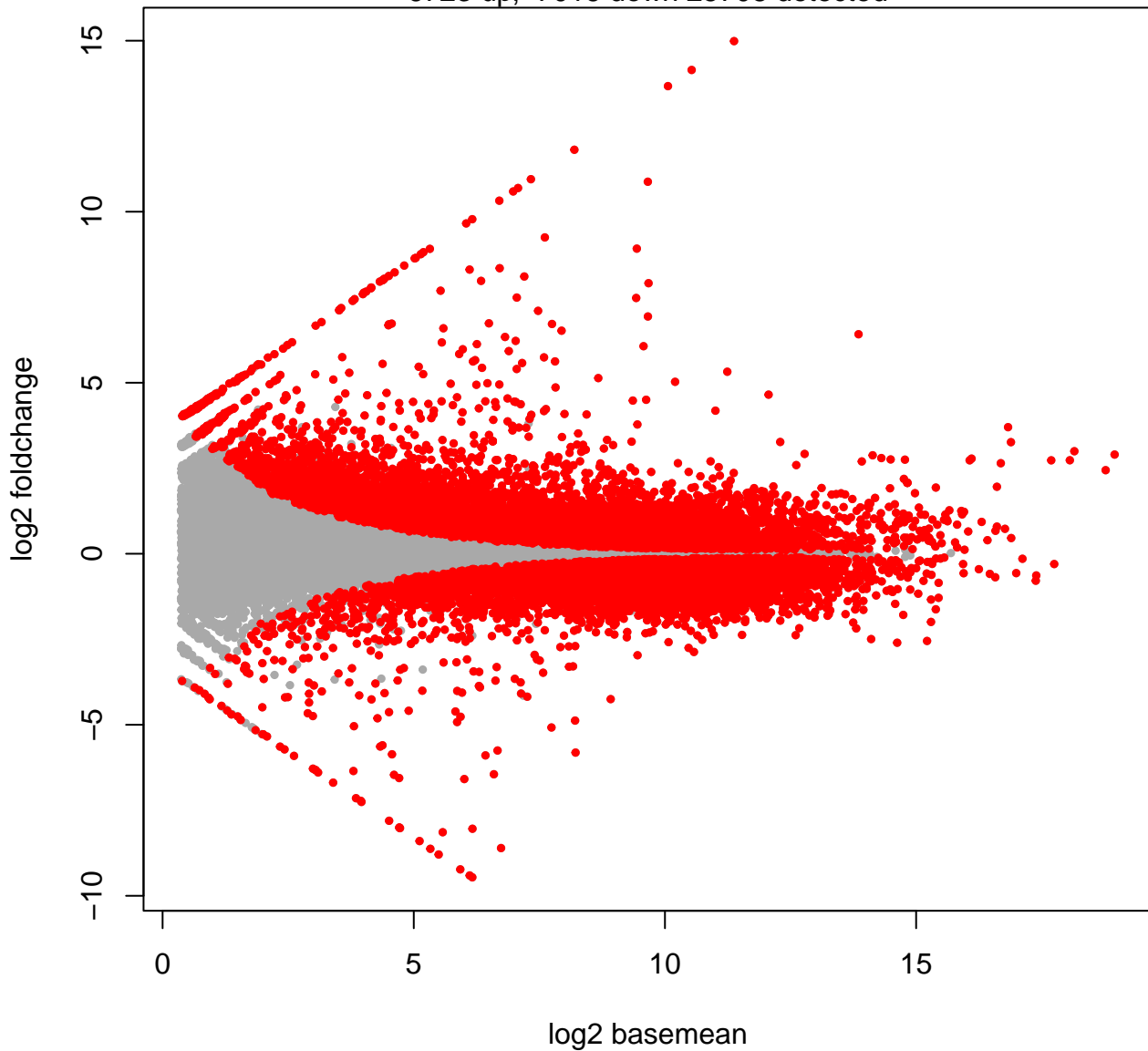


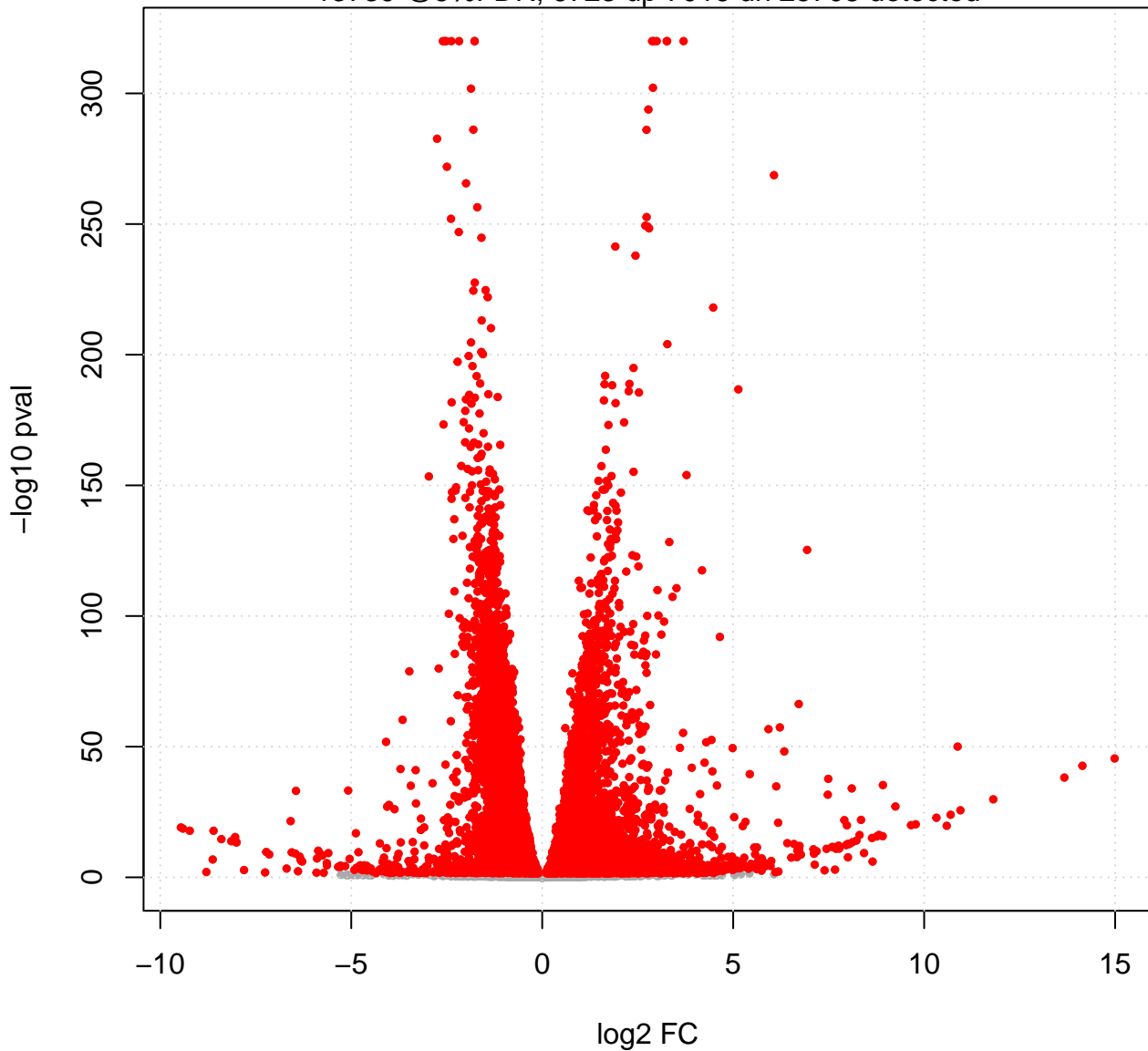
Cont4: Effect of drug in KO cells

6723 up, 7016 down 25708 detected



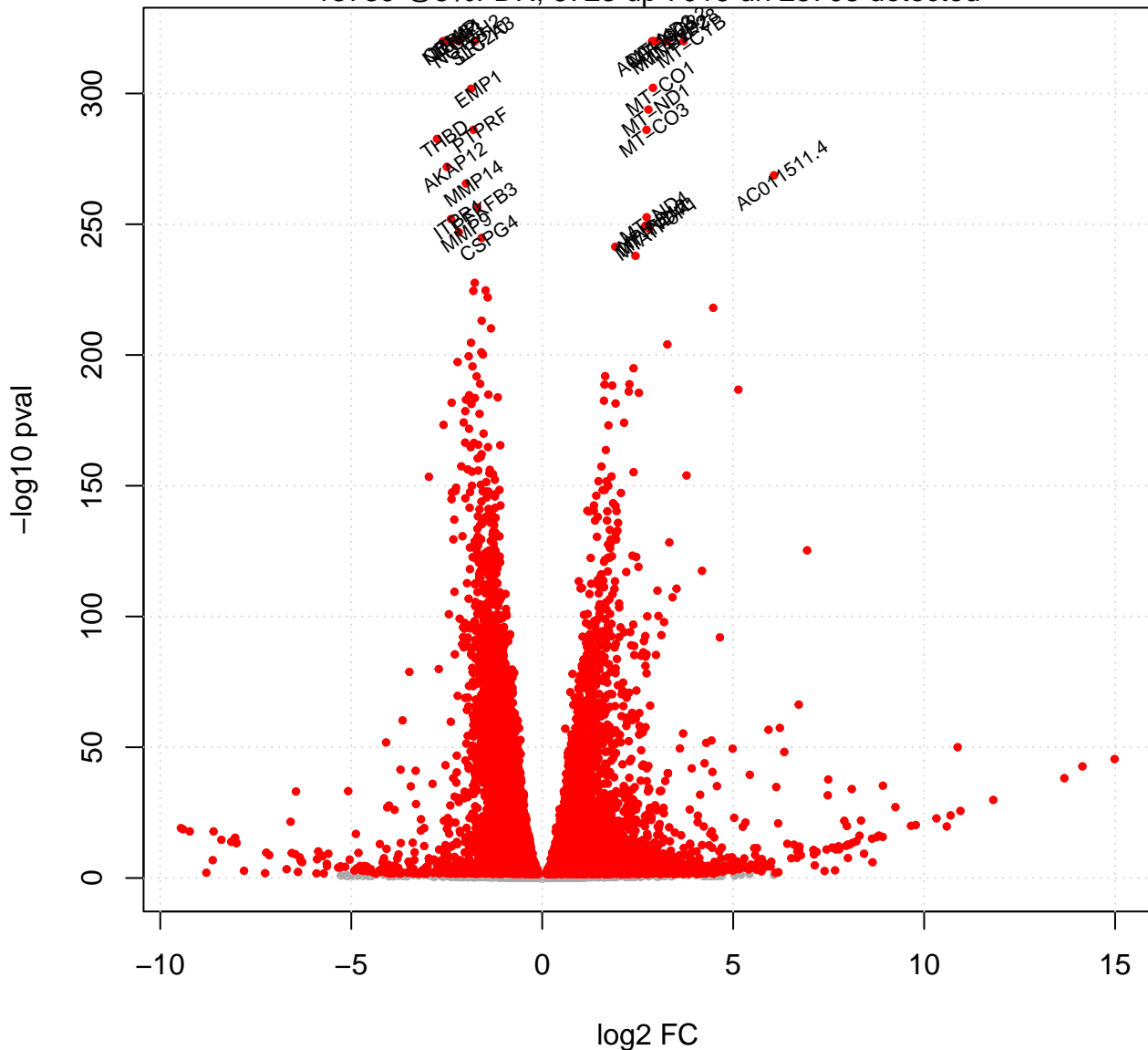
Cont4: Effect of drug in KO cells

13739 @5%FDR, 6723 up 7016 dn 25708 detected

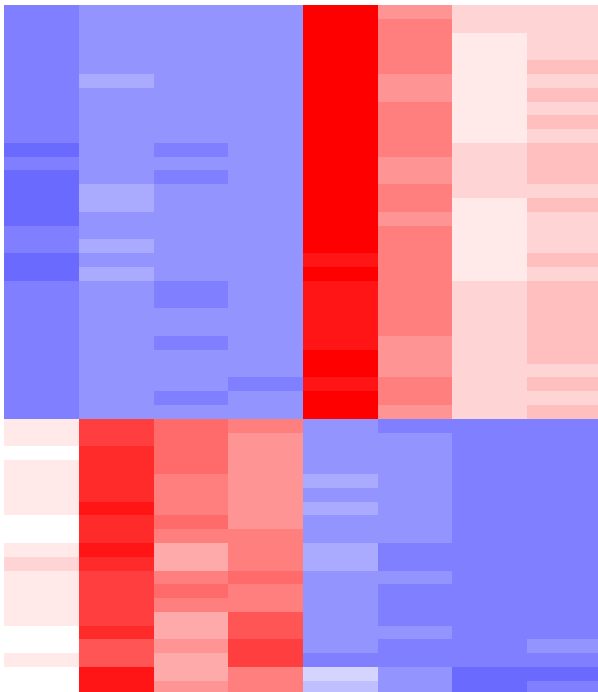
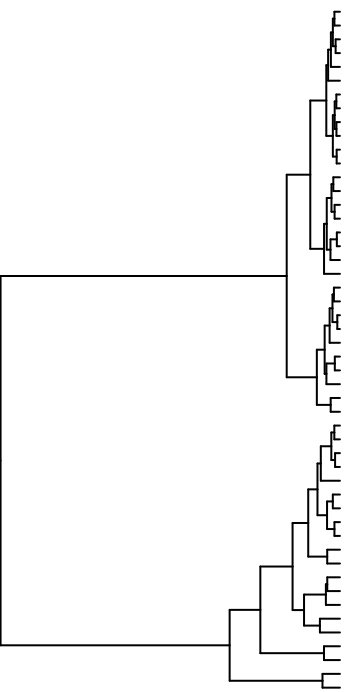
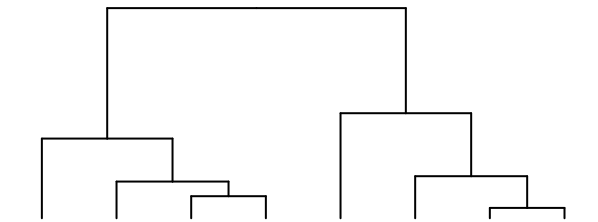
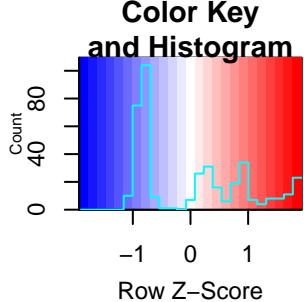


Cont4: Effect of drug in KO cells

13739 @5%FDR, 6723 up 7016 dn 25708 detected



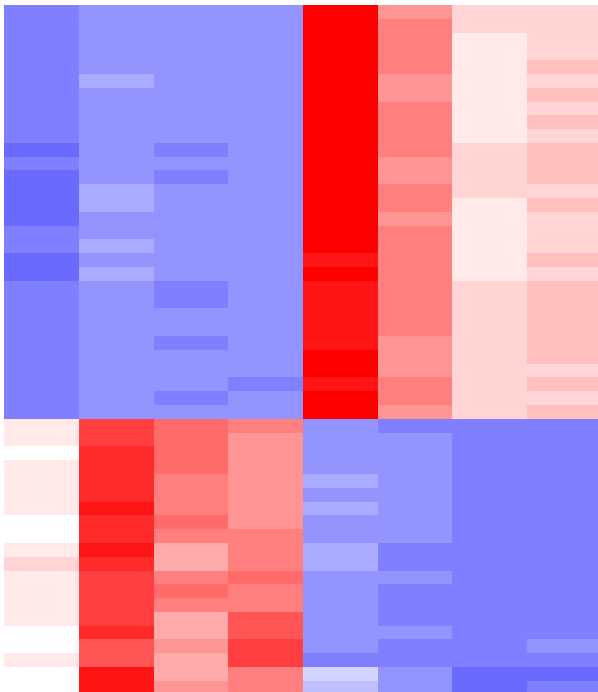
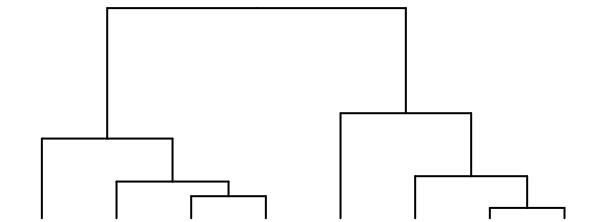
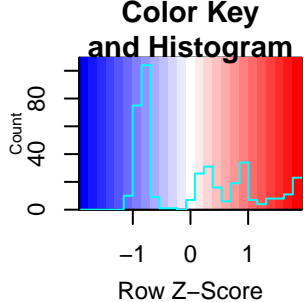
50 genes in Cont4: Effect of drug in KO cells



- ENSG00000038427.16 VCAN
- ENSG00000122884.12 P4HA1
- ENSG00000124942.14 AHNAK
- ENSG00000170525.21 PFKFB3
- ENSG00000059804.16 SLC2A3
- ENSG00000142949.17 PTPRF
- ENSG00000140564.13 FURIN
- ENSG00000163814.8 CDCP1
- ENSG00000128595.17 CALU
- ENSG00000141458.13 NPC1
- ENSG00000103888.17 CEMIP
- ENSG00000150995.20 ITPR1
- ENSG00000177119.17 ANO6
- ENSG00000100985.7 MMP9
- ENSG00000131016.17 AKAP12
- ENSG00000198888.2 MT-ND1
- ENSG00000198886.2 MT-ND4
- ENSG00000198938.2 MT-CO3
- ENSG00000198804.2 MT-CO1
- ENSG00000268903.1 AL627309.6
- ENSG00000225630.1 MTND2P28
- ENSG00000198727.2 MT-CYB
- ENSG00000168000.15 BSCL2
- ENSG00000267303.1 AC011511.4
- ENSG00000211459.2 MT-RNR1

- KO_dNs_A
- KO_dNs_B
- KO_dNs_C
- KO_dNs_D
- KO_ut_C
- KO_ut_D
- KO_ut_B
- KO_ut_A

50 genes in Cont4: Effect of drug in KO cells



- ATP2B4
- VCAN
- EMP1
- F4HA1
- MMP14
- AHNAK
- COL12A1
- PFKFB3
- TGOLN2
- SLC2A3
- LRP10
- PTPRF
- CSPG4
- FURIN
- THBS2
- CDGCP1
- MCFD2
- CALU
- HSPA8
- NPC1
- TGM2
- CEMP1
- ITGB3
- ITPR1
- NDRG1
- ANG6
- NOTCH2
- MMP9
- THBD
- AKAP12
- MTATP6P1
- MT-ND1
- MT-ND4L
- MT-ND4
- MT-RNR2
- MT-CO3
- MT-ND3
- MT-CO1
- MT-CO2
- AL627309.6
- NPIP12
- MTND2P28
- MT-ND2
- MT-CYB
- AC011603.2
- BSCL2
- AC011558.1
- AC011511.4
- GOLGA8B
- MT-RNR1

KO_dNs_A
 KO_dNs_B
 KO_dNs_C
 KO_dNs_D
 KO_ut_C
 KO_ut_D
 KO_ut_B
 KO_ut_A